



EPCO 160 FITTING SYSTEMS FOR GLASS SLIDING DOORS



URL:<http://www.epcocorp.com>
E-mail:epco@epcocorp.com

Head Office

EPCO ARCHITECTURAL HARDWARE (USA) INC.
16004 Kaplan Avenue, City of Industry, CA91744
Tel:(626)961-6827 Fax:(626)961-3525

Taiwan Branch

EPCO ARCHITECTURE HARDWARE (TAIWAN) CORP.
Unit. A,18-30, Jiang Shang Rd, Da Liao Hsiang,
Kaohsiung Hsien, Taiwan
Tel:(886-7)701-3219 Fax:(886-7)701-3210

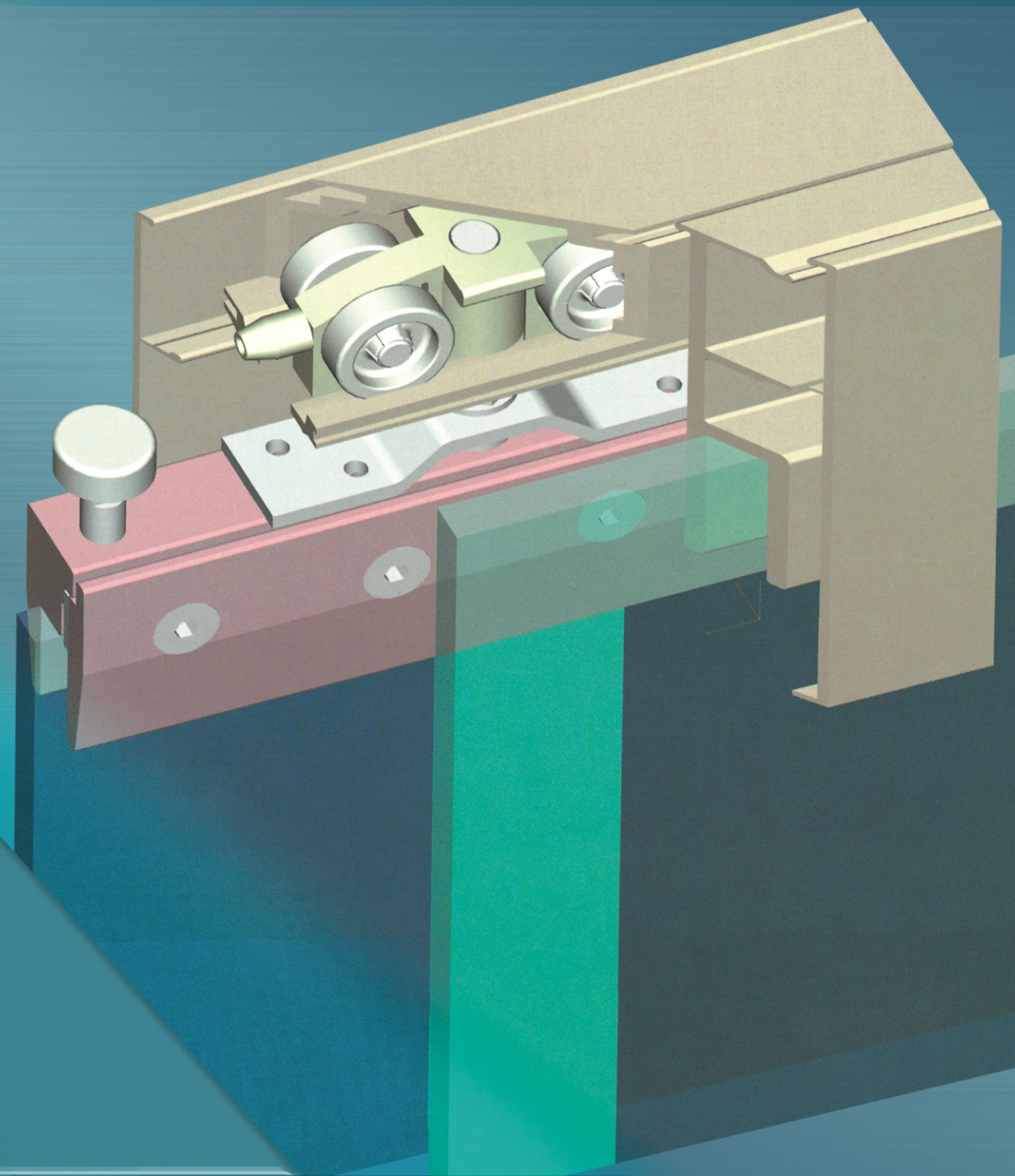
Philippines Branch

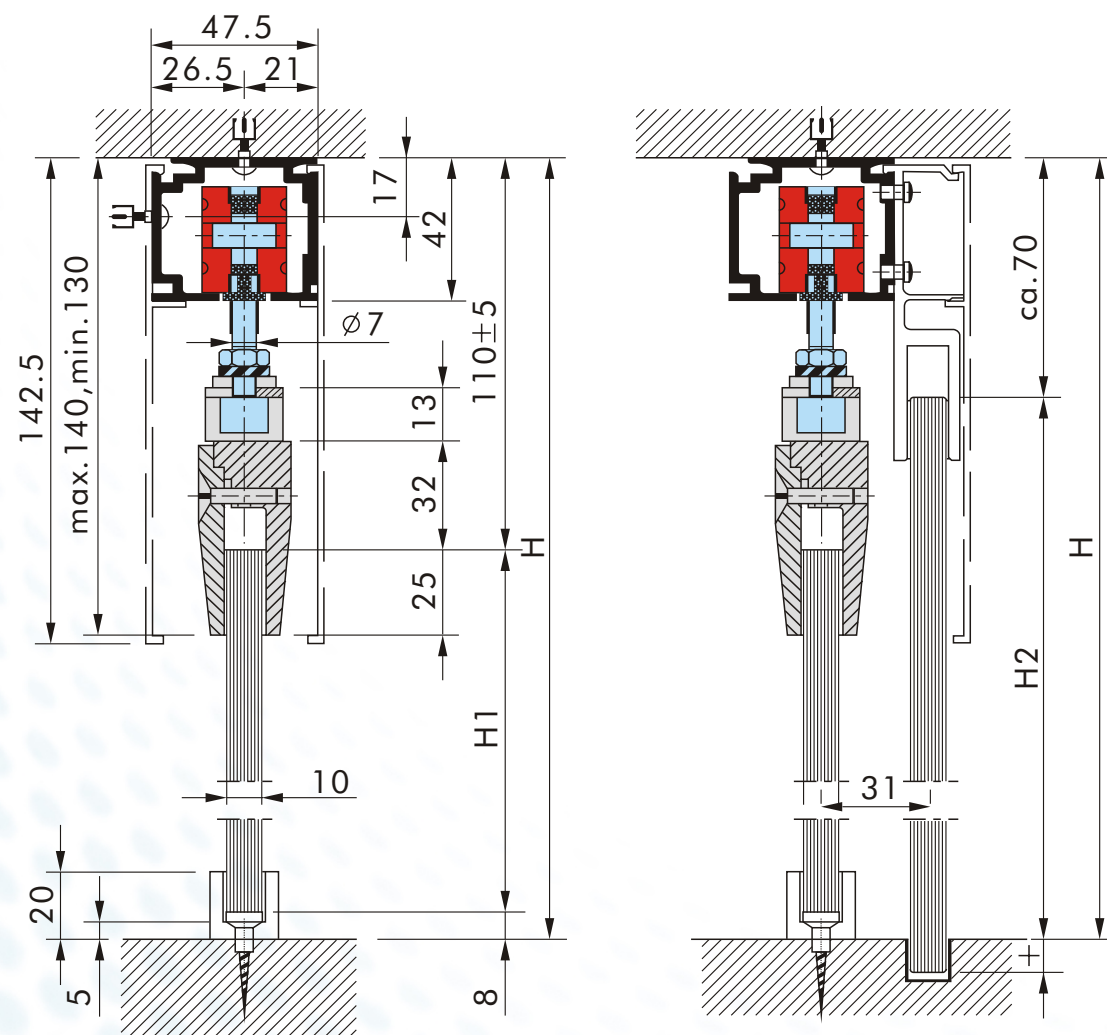
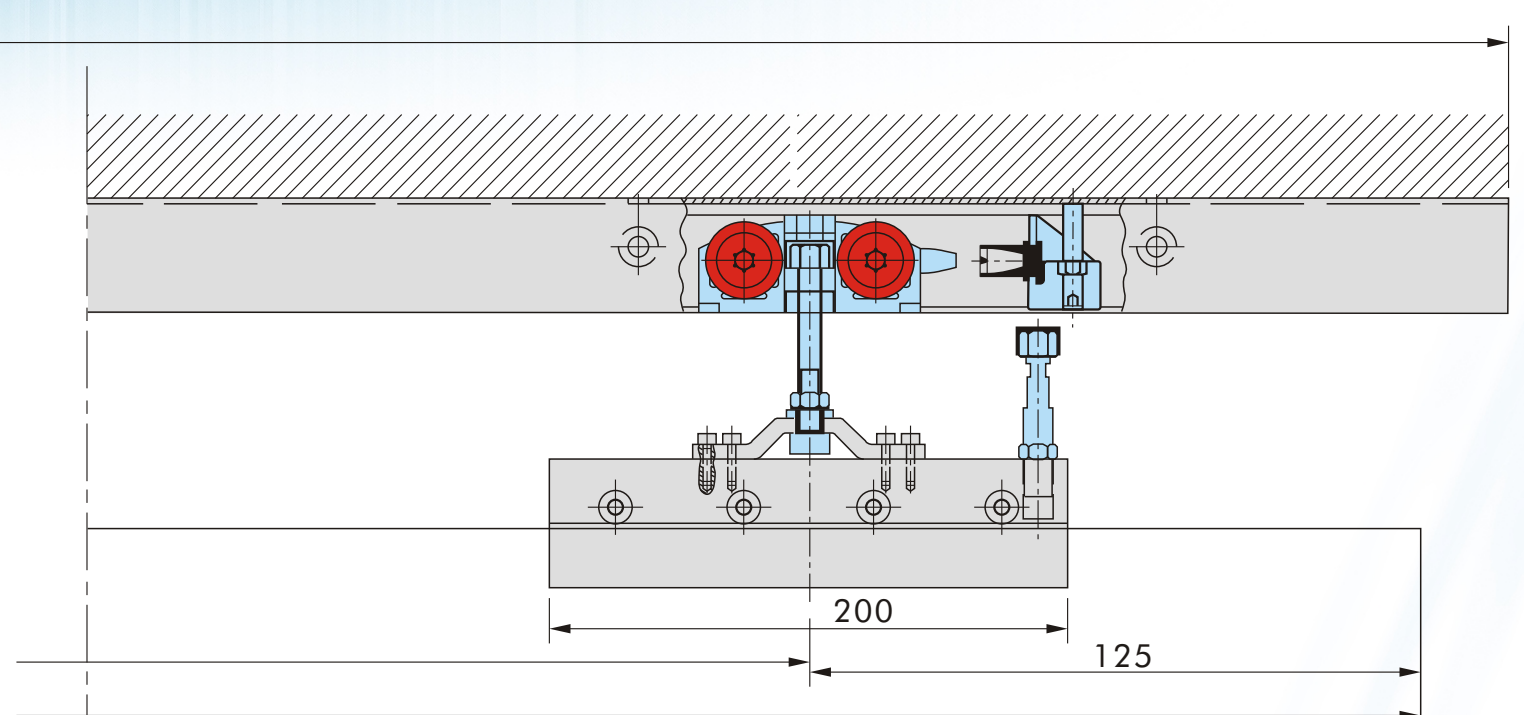
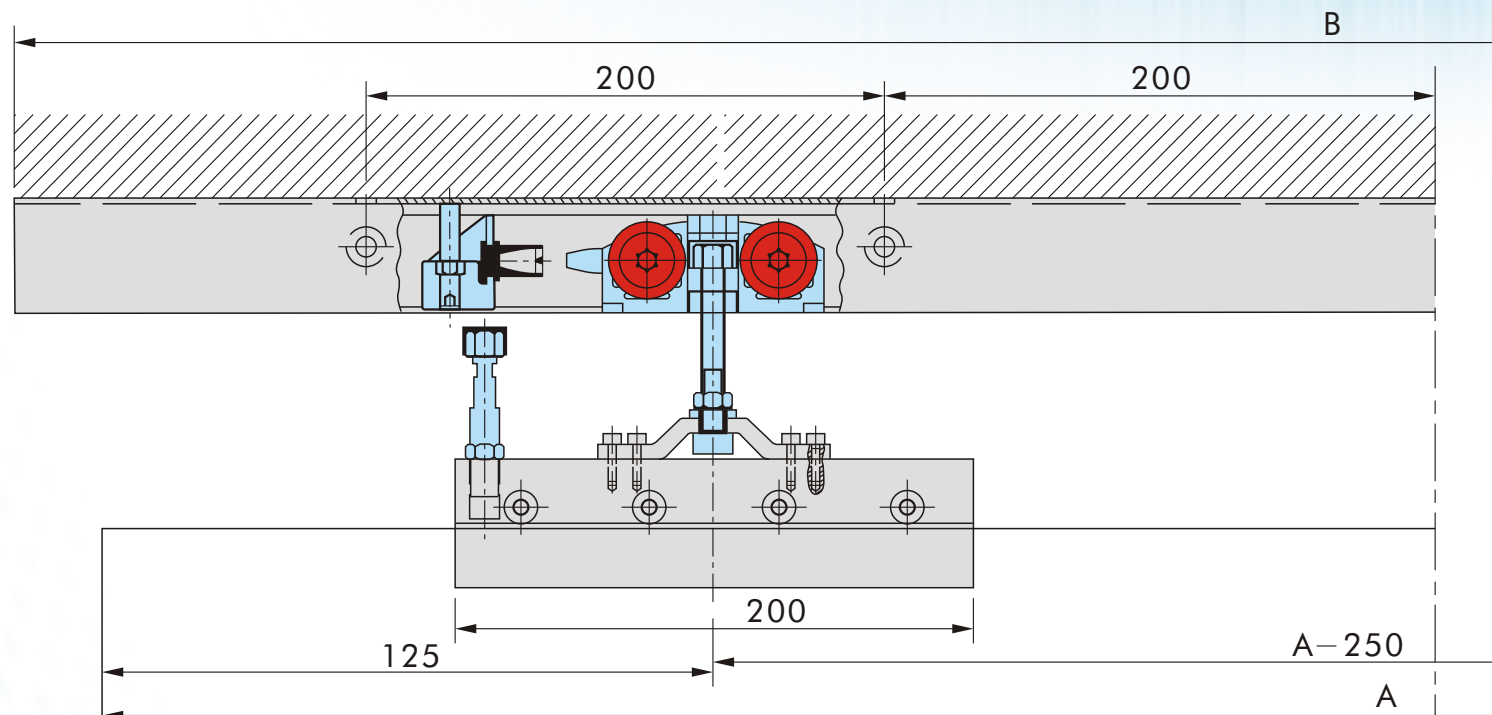
EPCO-Phils

505A Haber building, Boni Avenue, Bregy, Plainview
Madaluyoung City, Philippines
Tel:(632)532-1500 Fax:(632)531-9010

EPCO UK

Glasswall Engineering Ltd.
Glasswall@epco-uk.com
www.epco-uk.com





Features and Data
EPCO 160

For one more door leaves, with or without side panels; 8,10 and 12 mm glass thickness.

Maximum weight of door leaves

No. of carriers	max. weight (kg) per door leaf
2	120
3	150

Calculation of glass height

Height of sliding door leaf
 $H1 = H - 118$ (see left drawing)
 Height of side panel
 $H2 = H - 70 \text{ mm} + \text{insert into floor}$

Calculation of glass width

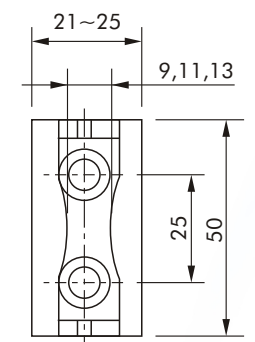
Width of sliding door leaf
 $A = 1/2 B$ (min.500)
 width of side panel
 $S = A + 40$

Torque for screws in the clamping patches

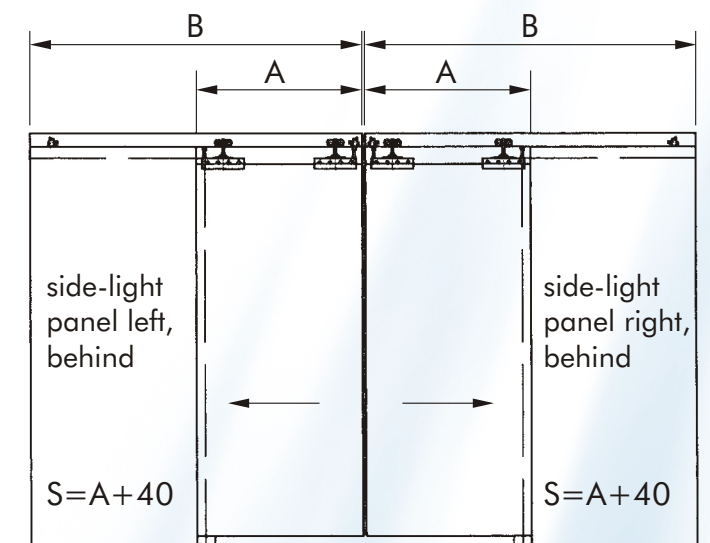
20 Nm
 All measurements in mm

All over height = H
 Glass height of sliding door leaf = H1
 Glass height of side panel = H2 + insert into floor

Length of track = B
 Width of door leaf = A
 Width of side panel = S



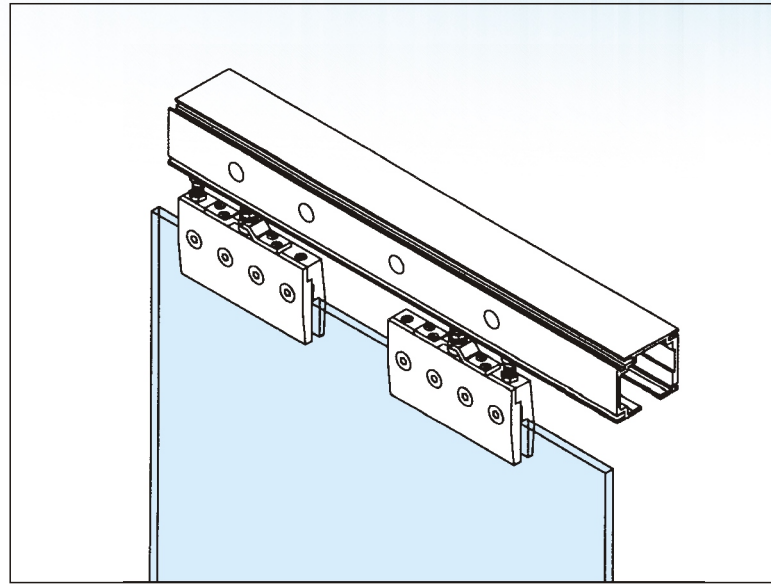
adjustable floor guide



Sliding door gear 160

complete, comprising 1 track,
2 carriers with clamping patches
and support screw for 8/10/12 mm
glass thickness,
2 end stops and 1 floor guide.

Track length B in mm	1900	2900
Art. No.	07-101	07-102



Accessory set 160

comprising 2 carriers with
clamping patches and support
screw for 8/10/12 mm glass
thickness,
2 end stops and 1 floor guide.

Art. No. 07-125

Shim

for 12 mm glass thickness

Art. No. 07-004

① Track 160

prepared for top or side fixing,
max. 4000 mm long

Art. No. 07-121

② Cover 160

for clip attachment
max. 4000 mm long

Art. No. 07-120

③ Side panel profile 160

to connect side panels and track
non prepared

max. 4000 mm long

Art. No. 07-122

Carriers 160

With clamping patches,
additional, for door leaves with
a max. Weight of 150 kg

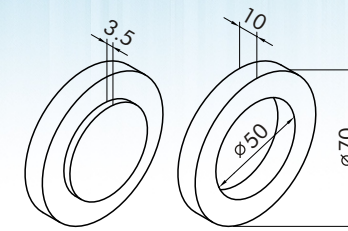
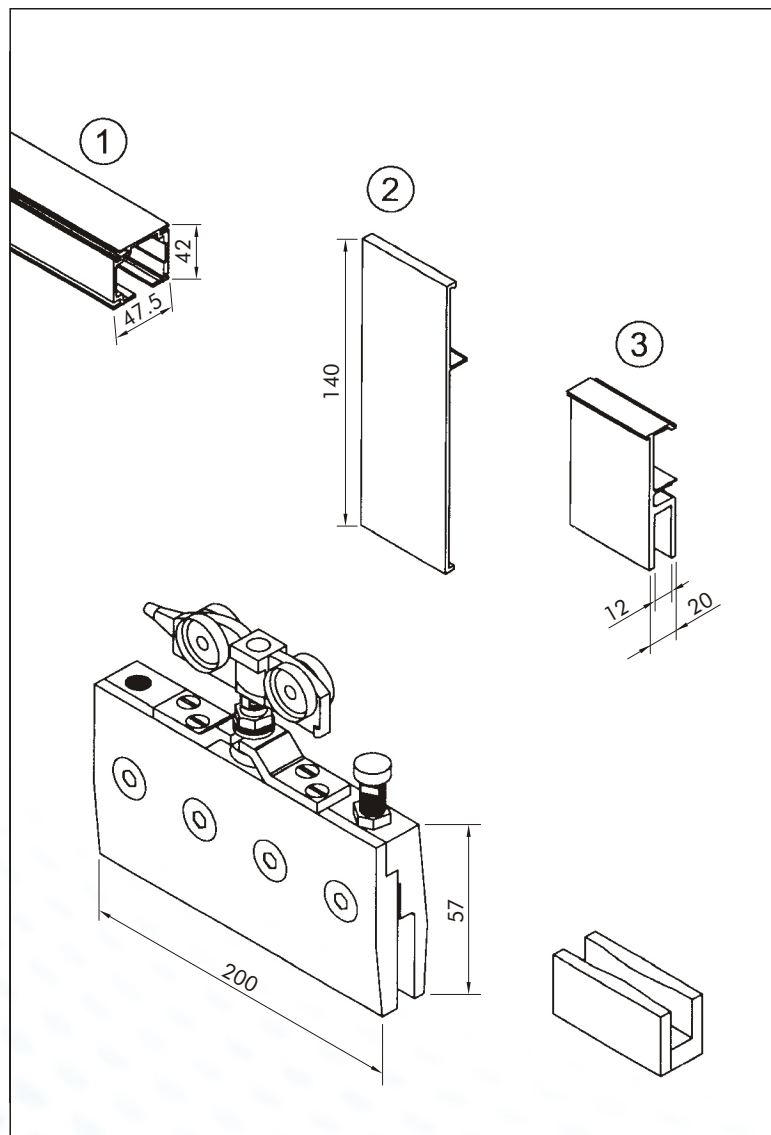
Art. No. 07-123

single roller package

Floor guide 160

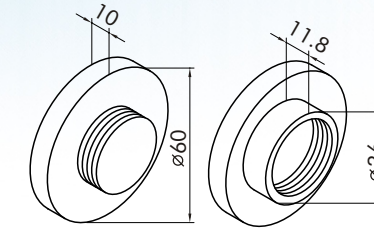
adjustable

Art. No. 07-126



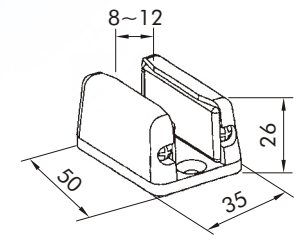
Art. No. 07-200

Flush pull, aluminium / stainless
to be glued on the glass



Art. No. 07-201

Flush pull, aluminium
Glass preparation = $\varnothing 38$

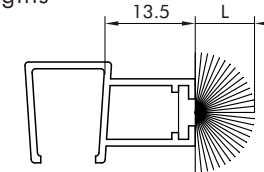


Art. No. 07-130

Metal adjustable
Floor Guide
Finish: Chrome-CR
Satin-SS

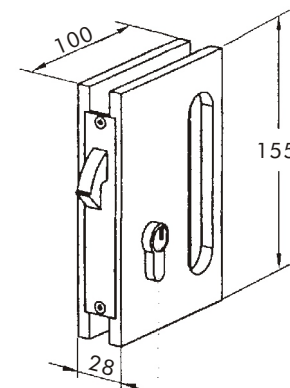
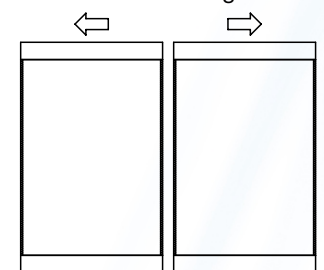
Clear PVC Seals W/ Weather Strips
for Auto Doors / Sliding Doors

Supplied in 2200 mm (87")
stock lengths



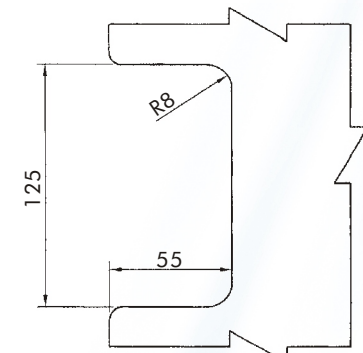
Code No.	Glass Thick	Weather Strip High(L)
PF1010	10 mm (3/8")	10 mm (3/8")
PF1013	10 mm (3/8")	13 mm (17/32")
PF1020	10 mm (3/8")	20 mm (13/16")
PF1210	12 mm (1/2")	10 mm (3/8")
PF1213	12 mm (1/2")	13 mm (17/32")
PF1220	12 mm (1/2")	20 mm (13/16")

Auto Door of Sliding Doors



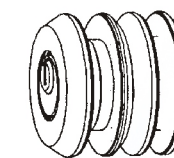
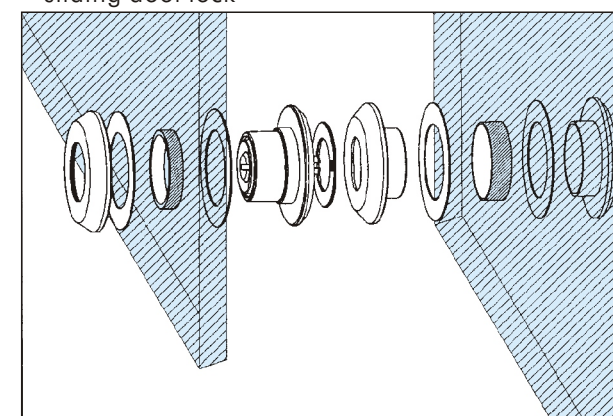
Art. No. 07-132

Lock with hook for sliding doors



Glass preparation

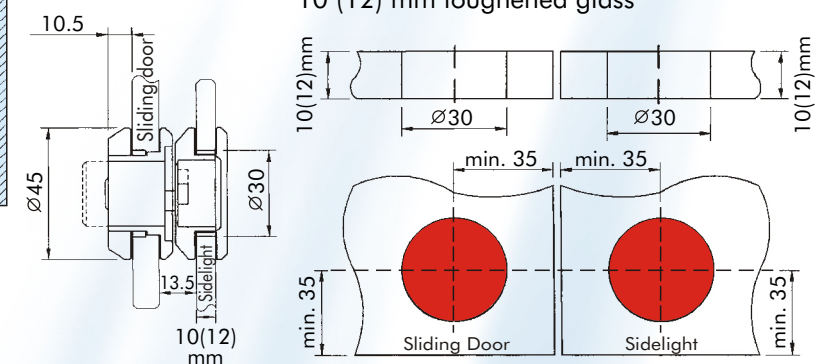
installation of
sliding door lock

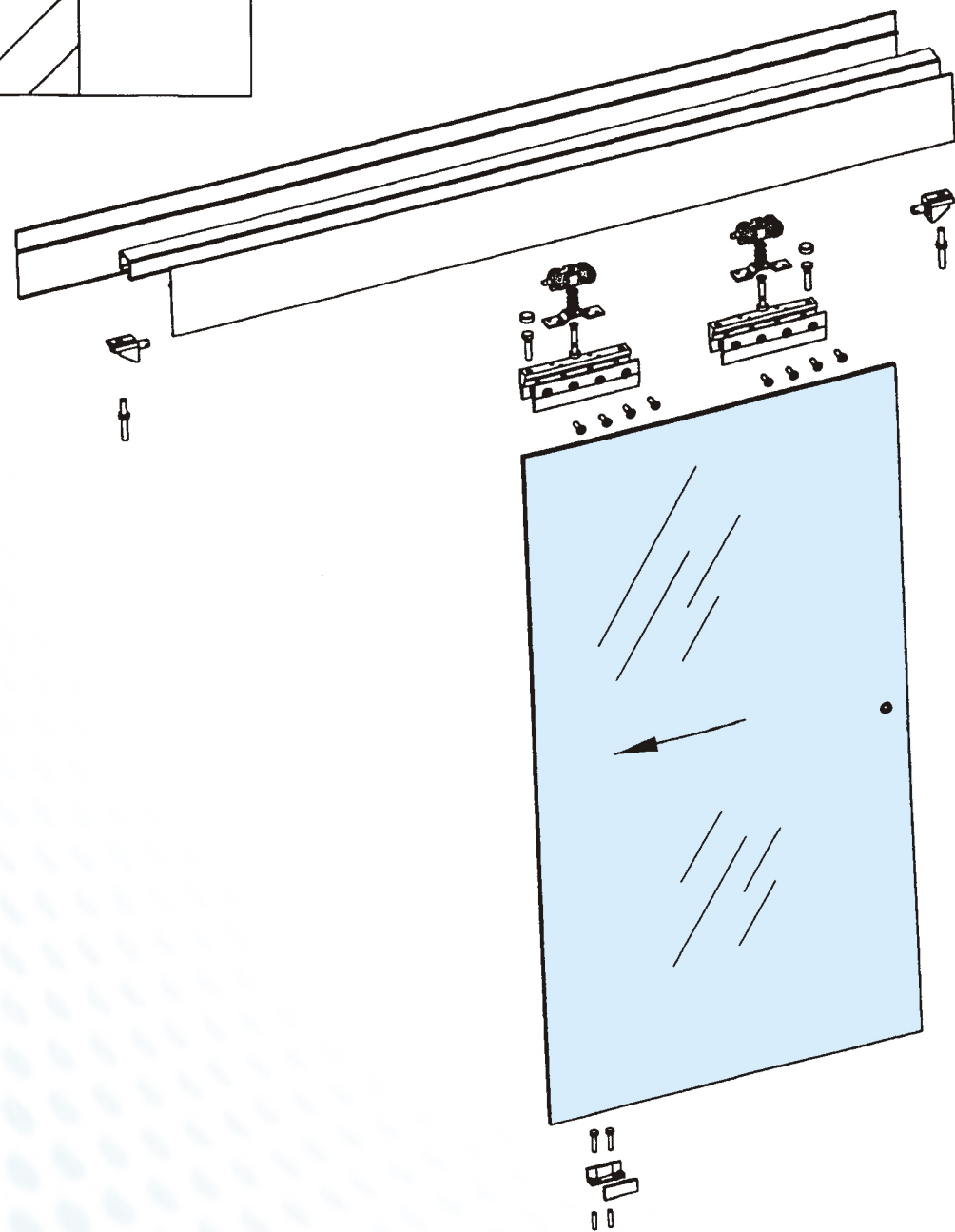
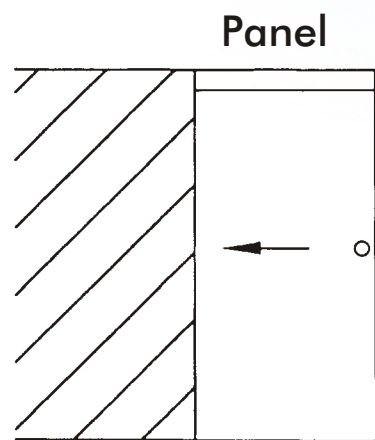


Art. No. 07-131

Sliding Door Lock

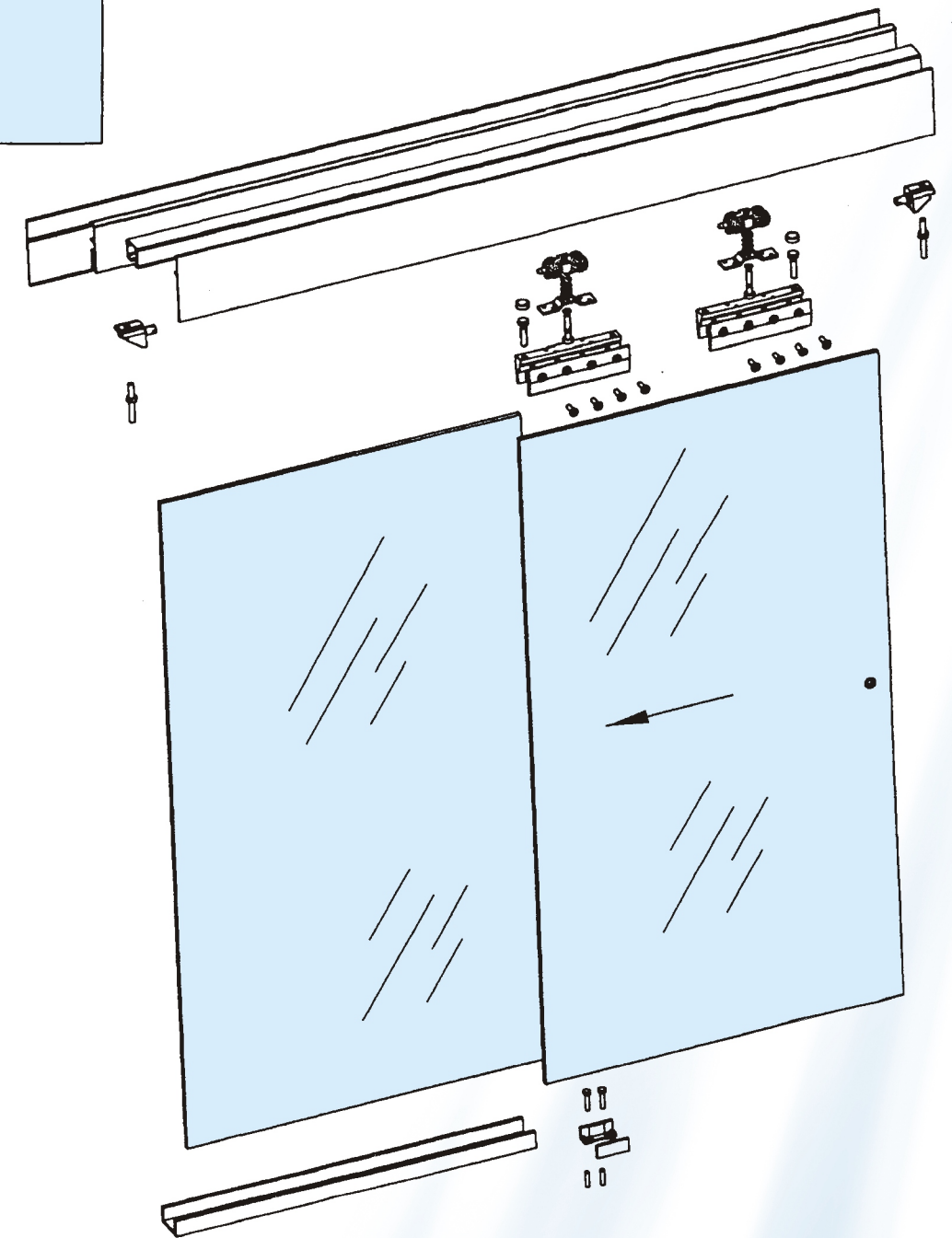
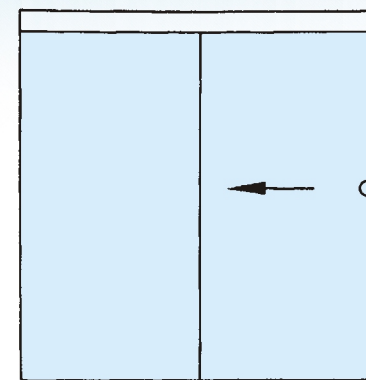
Glass preparation sliding door/sidelight for
10 (12) mm toughened glass





Please specify glass thickness and panel width when ordering.
 Maximum sliding panel weight equals 264 lbs.
 Track length is 2X the panel width , the covers are equal to the panel width.
 Track will be spliced when length exceeds 157".

Sliding panel



Please specify glass thickness and sliding panel width when ordering.
 Sliding panel equals half the overall width. The sidelite equals the sliding panel width plus 1-9/16".
 Maximum sliding panel weight equals 264 lbs.
 Track , sidelite channel and cover lengths are equal to 2X the panel width.
 Track , sidelite channel and covers will be spliced when length exceeds 157".