

## VOLUME 5 - TENSION ROD SYSTEM

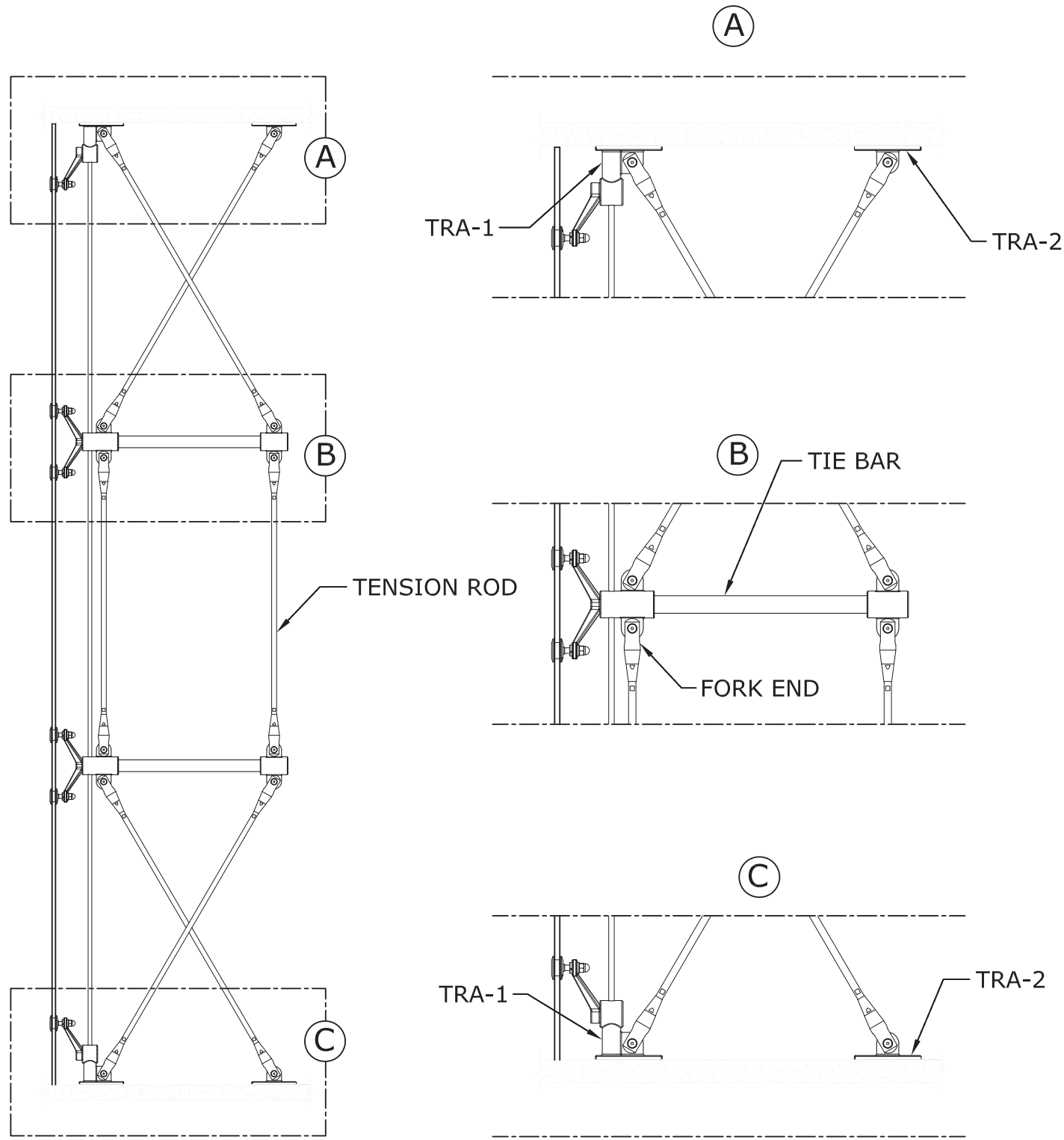
# EPCO POINT SUPPORTED SYSTEM



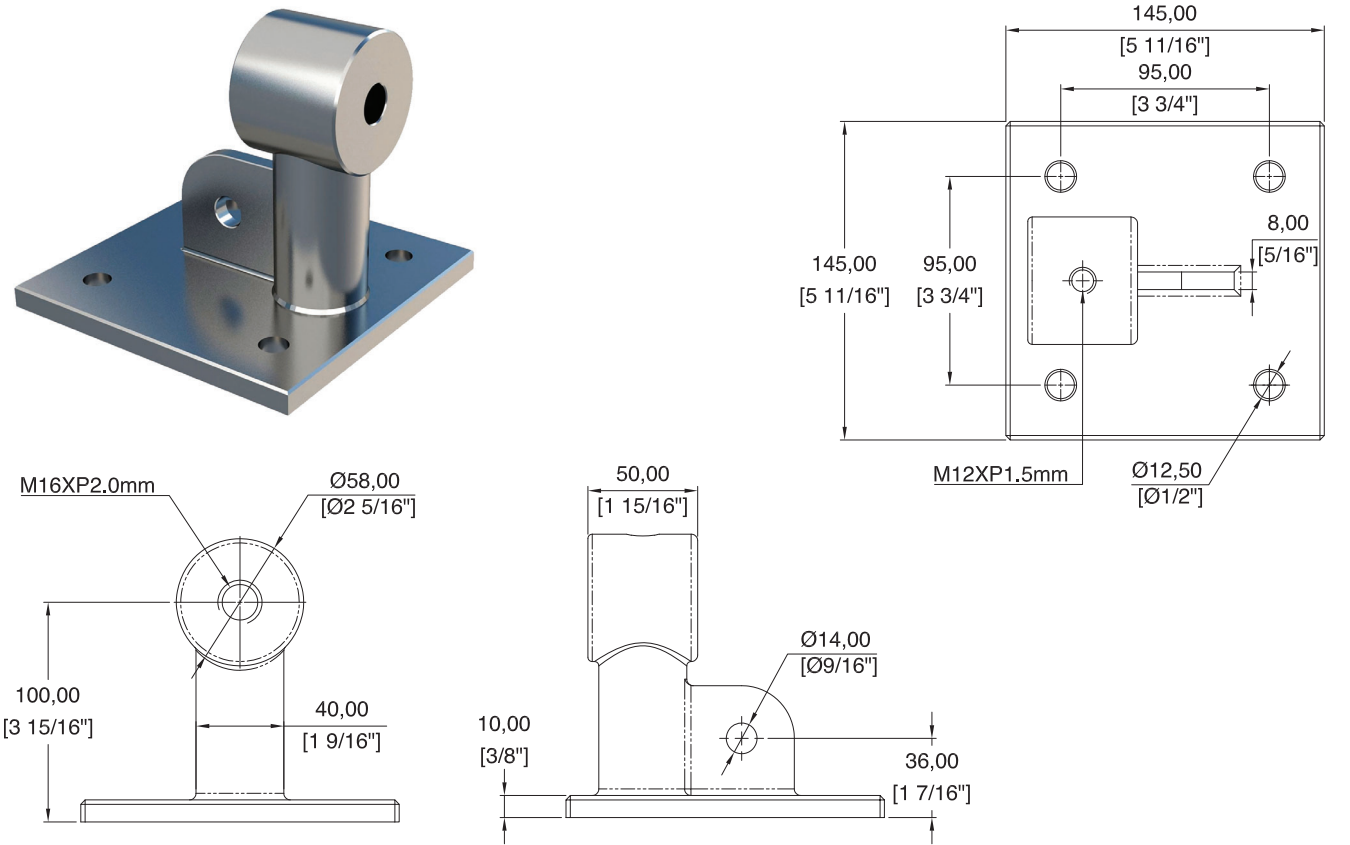
# TENSION ROD SYSTEM

TRA (FRONT-TOP & BOTTEN)  
TRB (TIE BAR)  
TRF (ADJUSTABLE FORK)

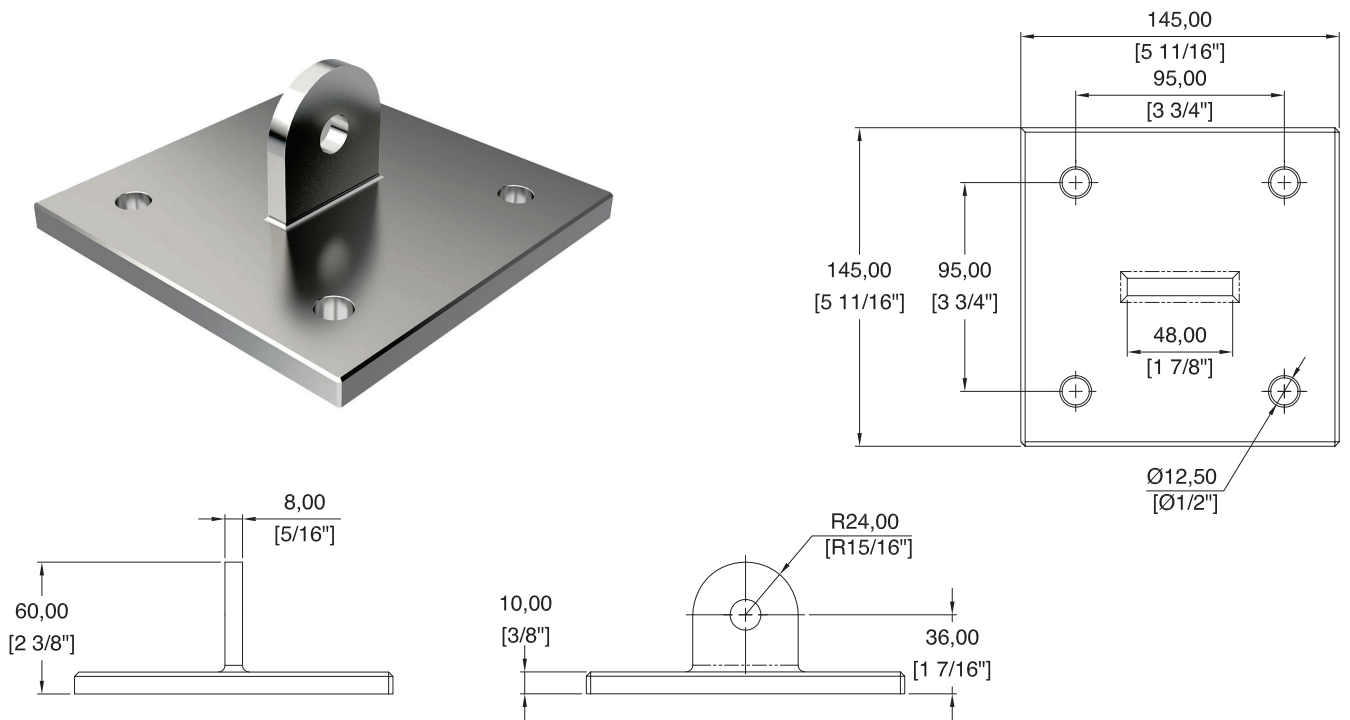
TRE (FORK EYE)  
TRO (ROD)  
TRC (ROD COUPLER)



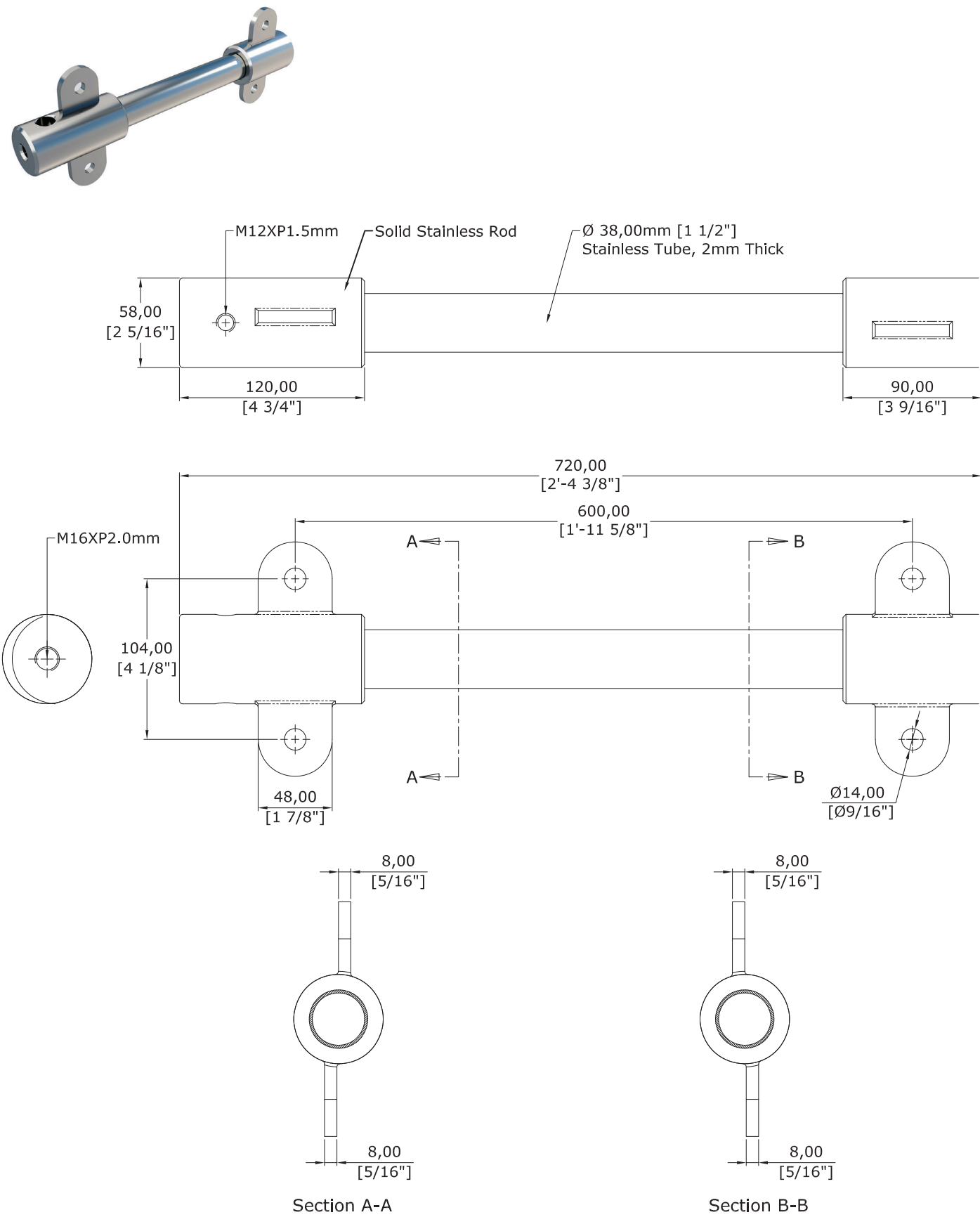
## TRA-1 Anchor Plate (Front - Top & Bottom)



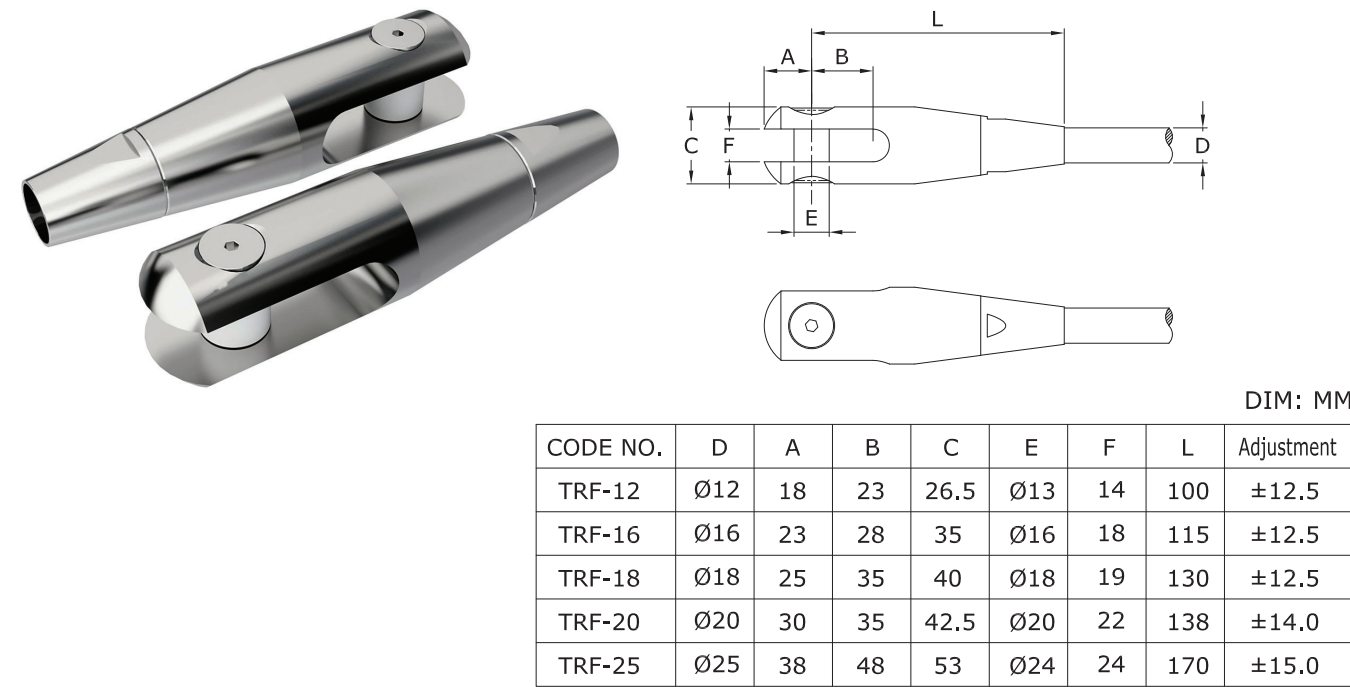
## TRA-2 Anchor Plate (Rear - Top & Bottom)



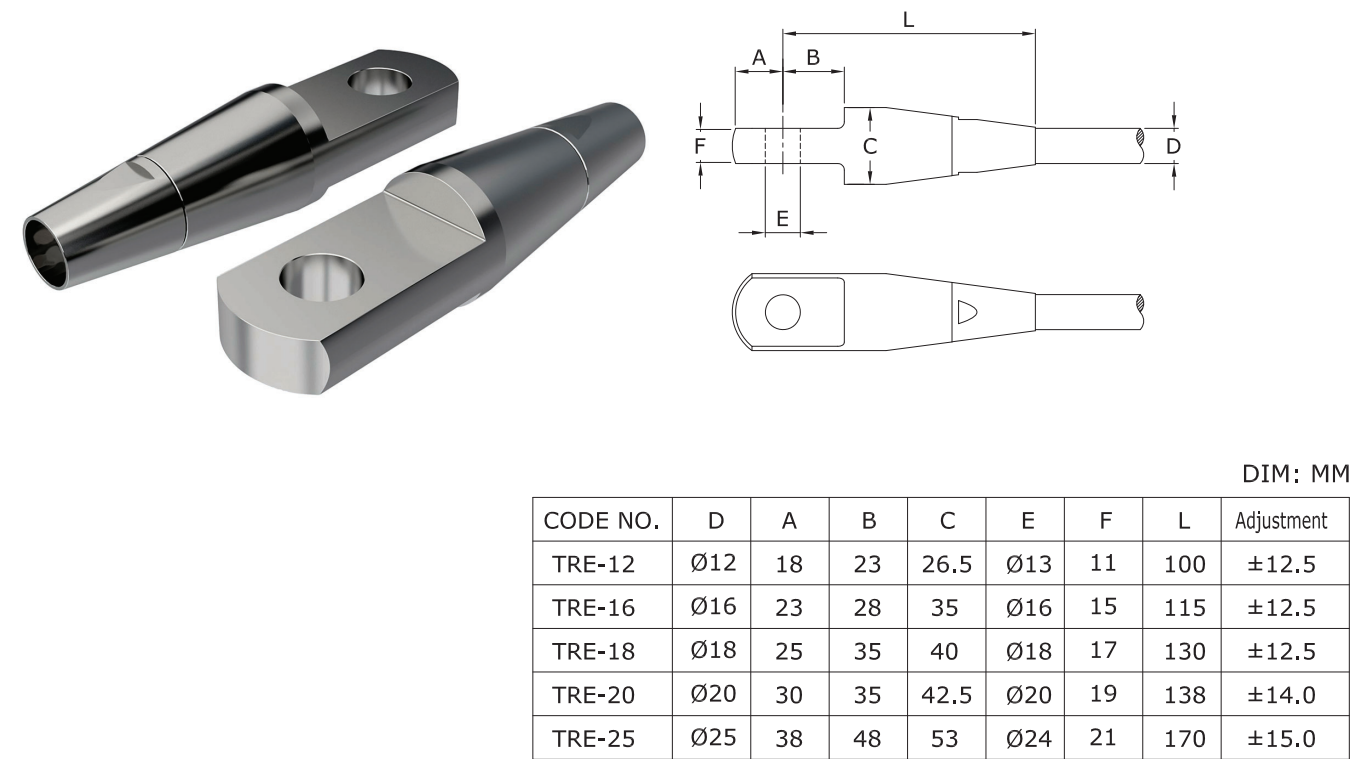
TRB Tie Bar



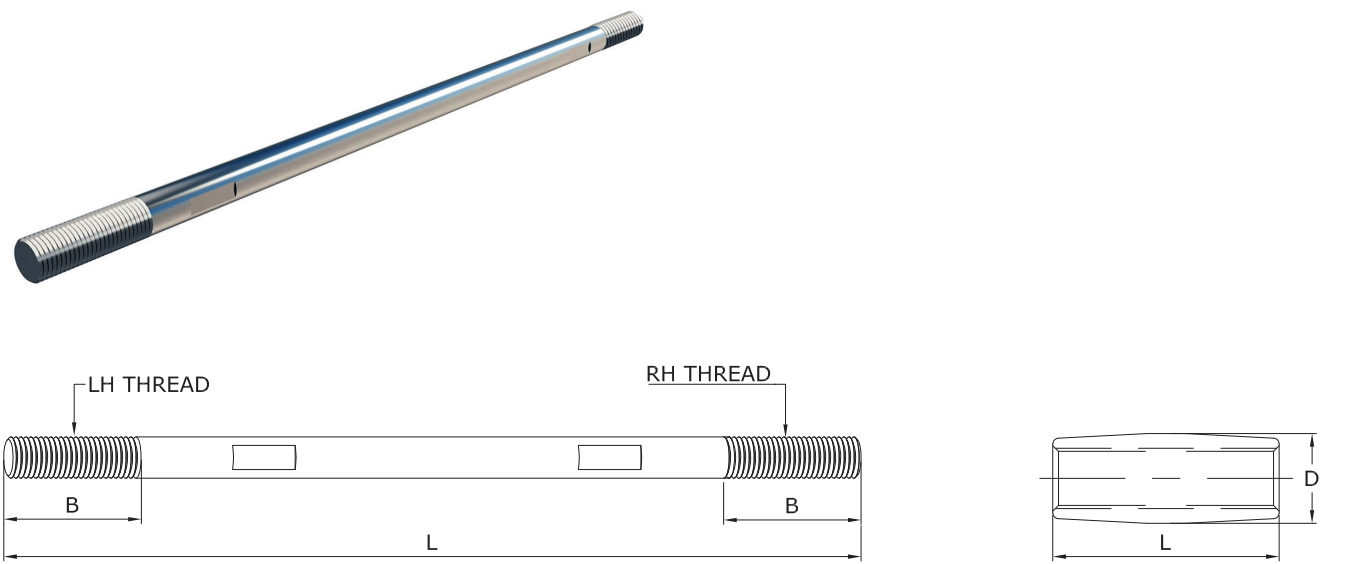
TRF Adjustable Fork



TRE Adjustable Eye



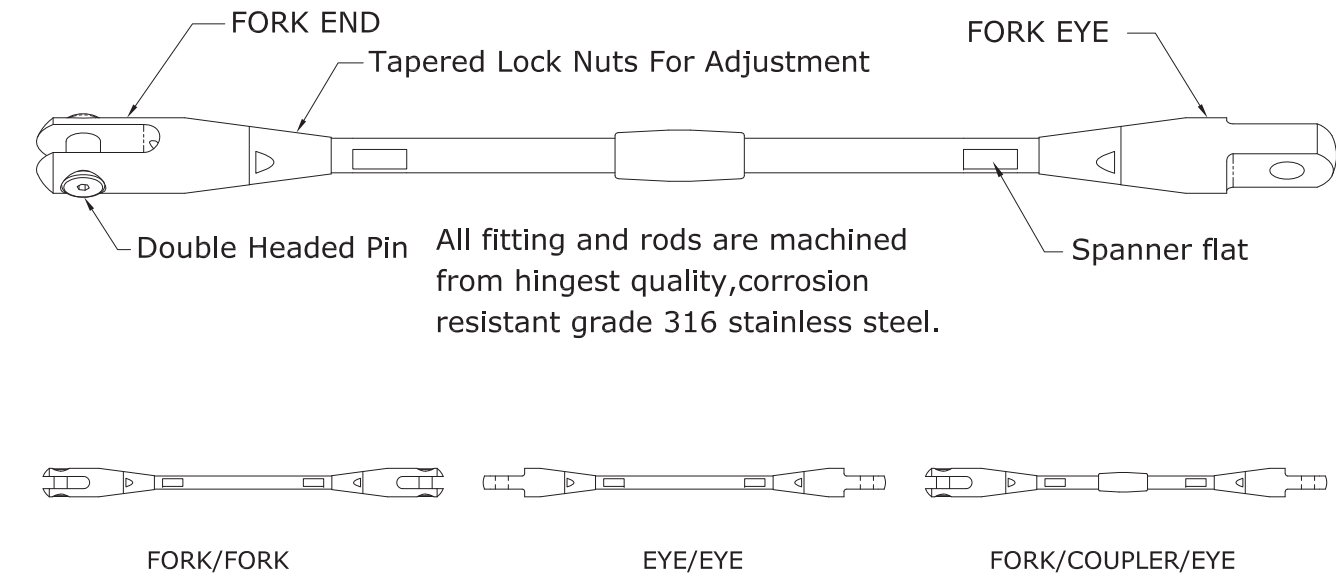
TRO Rod & TRC Rod Coupler



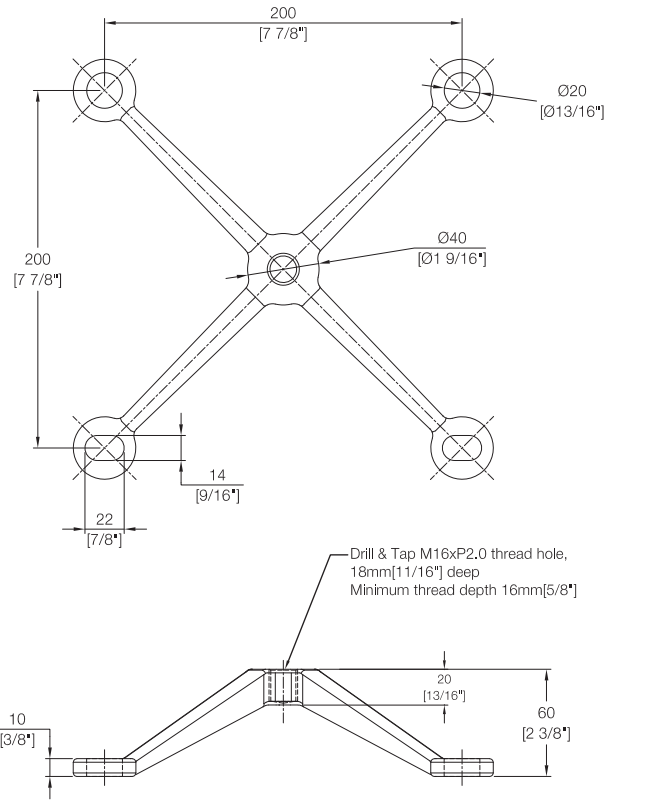
ROD		DIM: MM	
CODE NO.	D	B	L
TRO 12	Ø12	40	Specify
TRO 16	Ø16	50	Specify
TRO 18	Ø18	80	Specify
TRO 20	Ø20	100	Specify
TRO 25	Ø25	134	Specify

ROD COUPLER		DIM: MM	
CODE NO.	D	L	
TRC 12	Ø19.8	50	
TRC 16	Ø23.8	60	
TRC 18	Ø26	66	
TRC 20	Ø30	72	
TRC 25	Ø39.5	90	

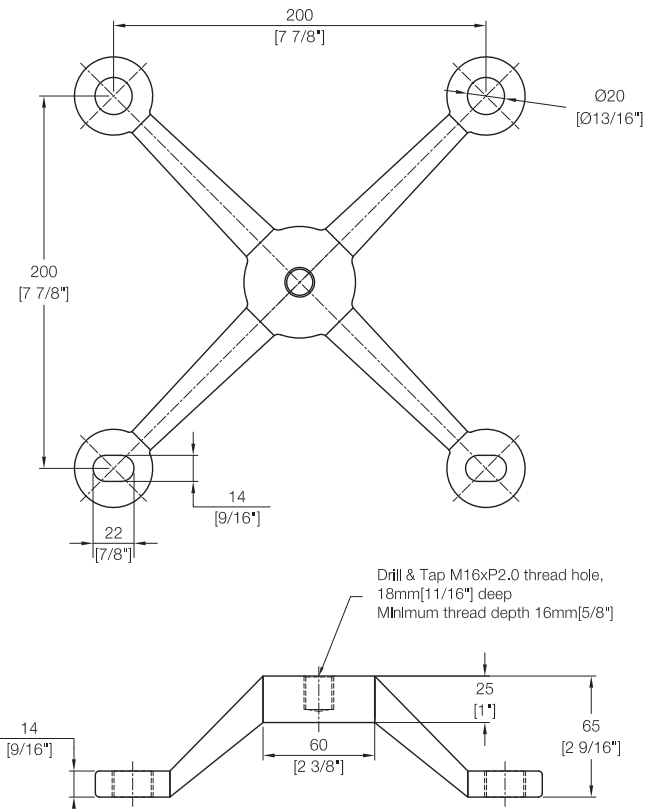
Assembly



GWSFA Spider Fitting



GWSFMA Spider Fitting



# Reference

## Product Information:

- Material: 316 Grade Stainless Steel
- Glass Thickness: 12mm ~ 38mm
- Bolt Assembly Type: 2.11, 2.3D, 2.3D IG, 2.1, 2.11 and 2.3 IG
- Glass Hole: Required
- Finish: Stainless Polished, Stainless Satin, Dark Bronze, and Matte Black

## Product Finishes:

Stainless Polished (SP)

Dark Bronze (DB)

Stainless Satin (SS)

Matte Black (MB)

## Glass Uses:



Monolithic Glass



Laminated Glass



Insulating Glass

\* For use with Tempered Glass Only

## Spider Fitting Series:

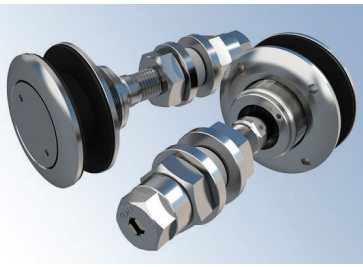


- GWSFA (Standard Duty)
- GWSFMA (Heavy Duty)

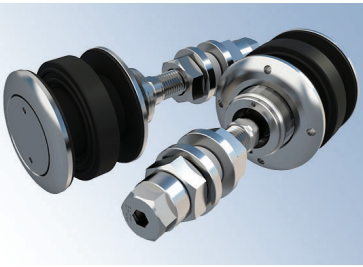
## Bolt Assemblies:



2.11 Flat Head  
Fixed Bolt Assembly



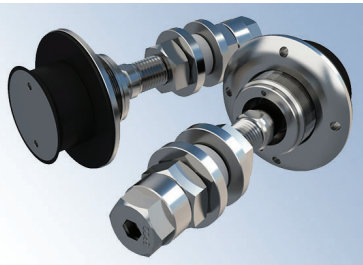
2.3D CS/OD  
Articulated Bolt Assembly



2.3D IG CS/OD/IG  
Articulated Bolt Assembly



2.1 Countersunk  
Fixed Bolt Assembly

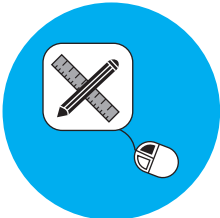


2.3 Countersunk  
Articulated Bolt Assembly

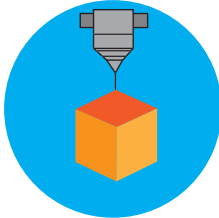


2.3 IG Countersunk/IG  
Articulated Bolt Assembly

## Key Services:



Design/Conceptual Drawings



3D Molding



Solutions with customers' comments  
and field conditions



Engineering and Calculation



2D/3D Shop Drawings and  
Detailing



Fabrication Drawings and Part  
Manufacturing

## EPCO Point Supported Systems

- GPK System
- GWPFA Fin Fitting System
- GWSFMA Structural Fitting System
- Single Point Fixing System
- Tension Rod System
- Patch Fitting System
- Notch-Less Glass Wall System

