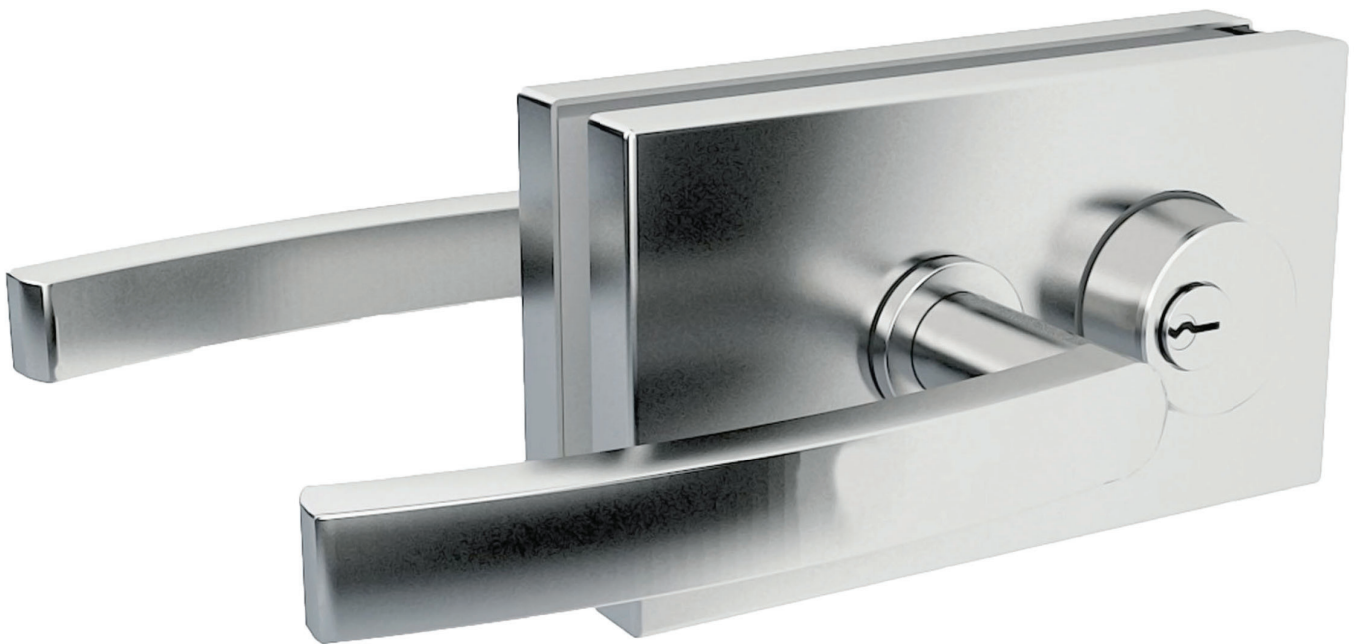


Glass Pivoting Door

Studio-North American Lever Latch Series



EPCO GLASS DOOR HARDWARE

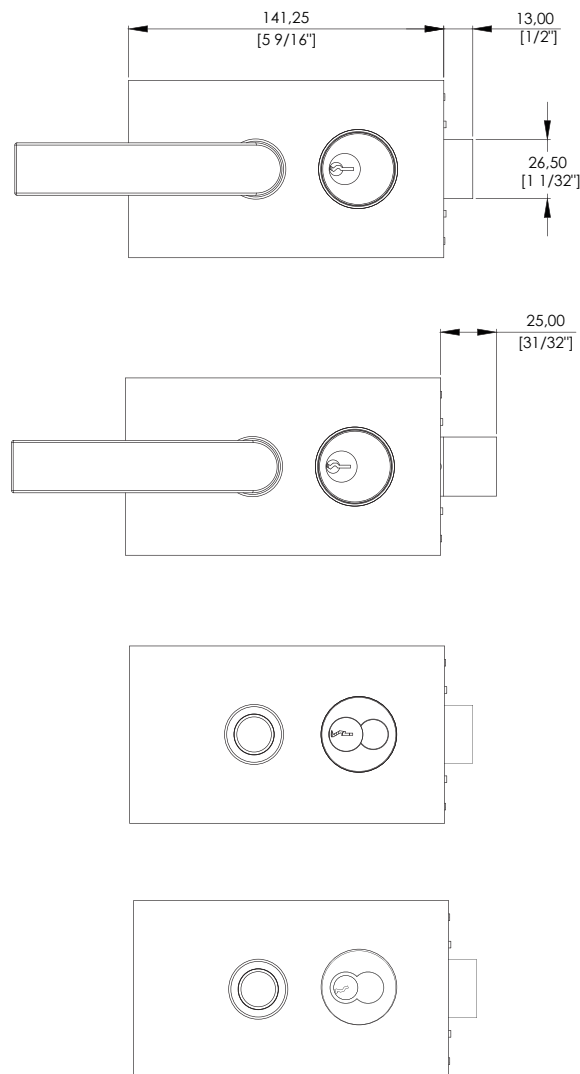


Product Features

EPCO Studio-North American series is an advanced Studio Lever Lock. While keeping the same minimal dimensions of length and width as classic Studio-Texas, the bolt throw is 25mm(1") length and is able to fully retract inside the lock body. If the bolt is not fully extended and deadlocked, the key cannot be taken out from the cylinder. This allows the user to be aware of any obstruction in the bolt keeper or receiver, which would otherwise compromise security.

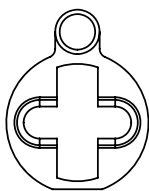
The Studio-North American accepts any standard mortise cylinder from either or both sides. In addition, it is compatible with large format interchangeable core (LFIC) / full size interchangeable core (FSIC) and small format interchangeable core (SFIC).

On top of that, along with housing it is perfectly compatible with Schlage® 6-pin Everest and Primus LFIC, and Best® 7-pin SFIC series*



CAM

Studio-North American requires EPCO cam for lock operation.



Art.No. FD-405

Cam for covention mortis cylinder



Art.No. FD-406

Cam for LFIC & SFIC mortis cylinder

* SCHLAGE® is a registered trademark of Schlage Lock Company LLC. Best® is a registered trademark of dormakaba USA Inc.

Product Information

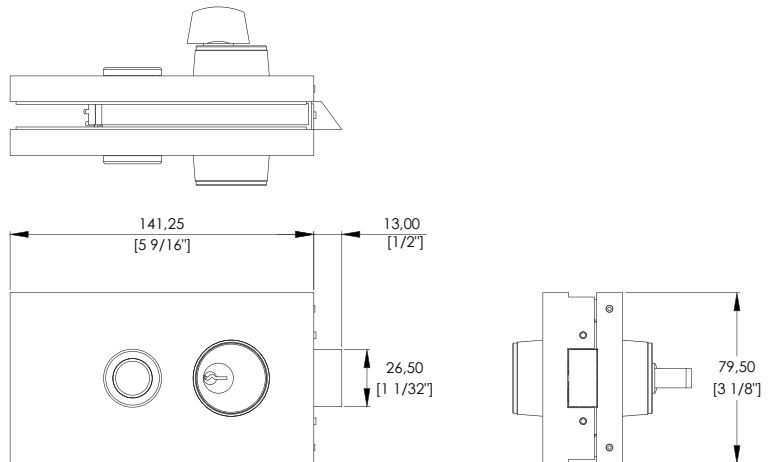
- Aluminum housing and stainless cover
- Glass thickness: 10mm(3/8") and 12mm (1/2")
- Glass fabrication: Required



Art.No. 18.102S

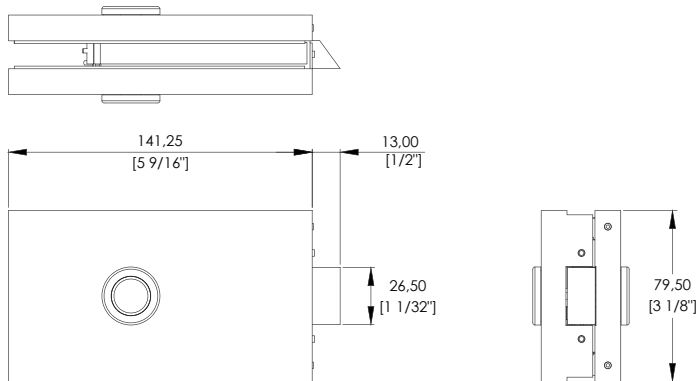
Lever Lock Set

- North American keyed cylinder and thumbturn sold separately.



Art.No. 18.103S

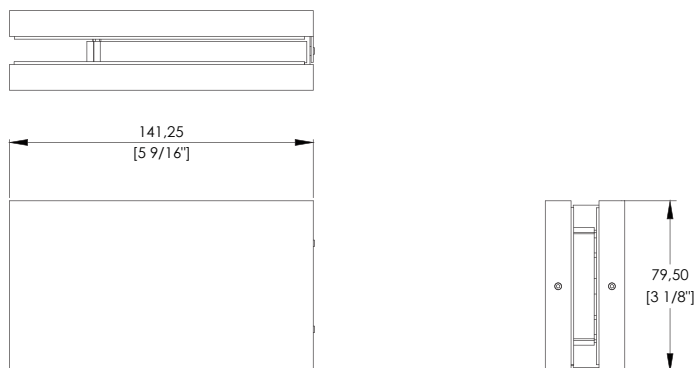
Lever Latch Set



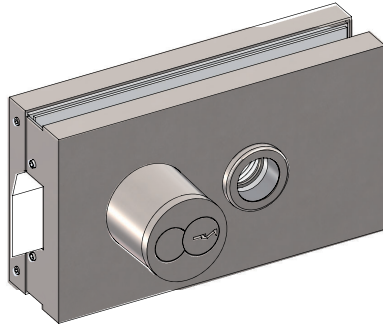
Art.No. 18.100S

Lock Keeper

- Work on double doors



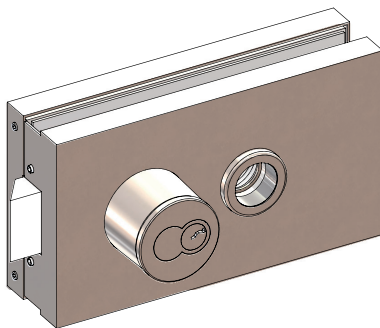
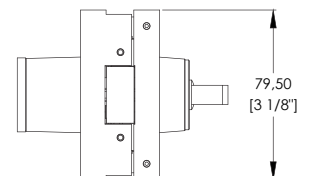
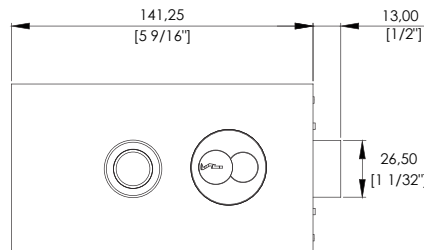
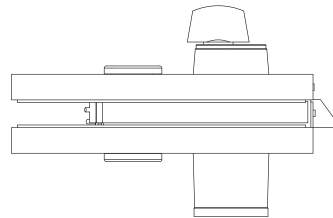
Product Information



Art.No.18.102S-LFICT with LFIC Cylinder

Lever Lock Set

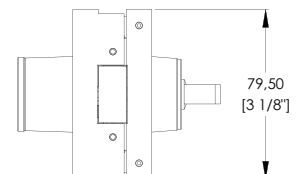
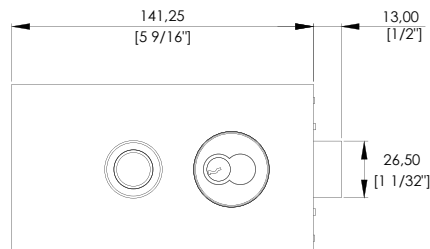
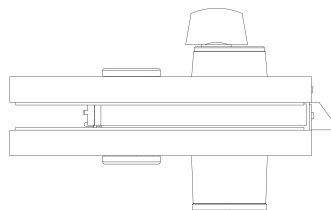
- Comes with LFIC mortise cylinder, thumbtum, and strike plate
- 6-pin LFIC, compatible with Schlage® Everest C keyway and Primus cores*



Art.No.18.102S-SFICT with SFIC Cylinder

Lever Lock Set

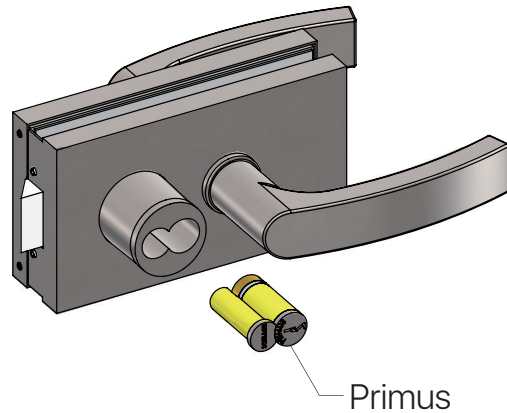
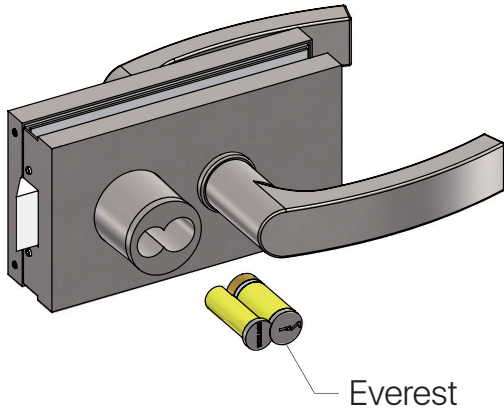
- Comes with SFIC mortise cylinder, thumbtum, and strike plate
- 7-pin SFIC, compatible with Best® A/C/F/G keyway cores*



* SCHLAGE® is a registered trademark of Schlage Lock Company LLC. Best® is a registered trademark of dormakaba USA Inc.

Product Compatibility

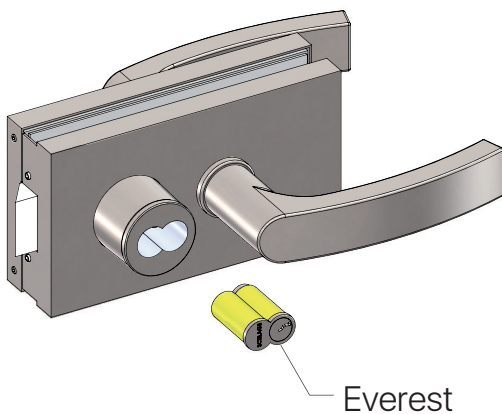
Studio-North American Series is compatible with Schlage® 6-pin Everest and Primus LFIC if higher security is needed, and 7-pin SFIC*. EPCO also offer lock sets with mortise cylinder housings without cores upon request.



Art.No.18.102S-LFIC8 with LFIC Cylinder Housing

Lever Lock Set

- Comes with LFIC mortise cylinder housing, thumbtum, and strike plate. Without core
- Lever handle (option)



Art.No.18.102S-SFIC8 with SFIC Cylinder Housing

Lever Lock Set

- Comes with SFIC mortise cylinder housing, thumbtum, and strike plate. Without core
- Lever handle (option)

* SCHLAGE® is a registered trademark of Schlage Lock Company LLC.

Product Information

Lever Handles



Art.No.SOG1012

Stainless Tubular Style Lever
Handle with 8mm (5/16") Square Spindle



Art.No.SOE1910

Stainless Modern Style Lever
Handle with 8mm (5/16") Square Spindle

Product Finishes



Stainless Polished (SP)



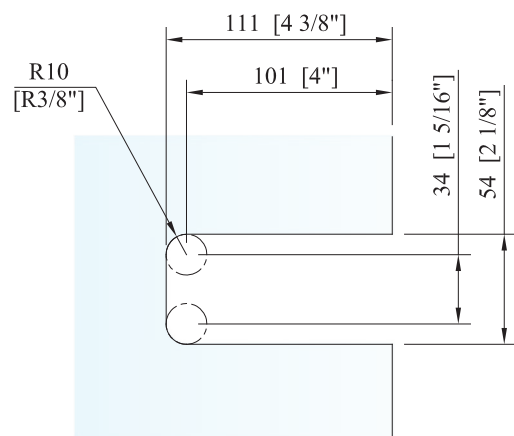
Stainless Satin (SS)



Matte Black (FMB)

* Other finish is available upon request

Glass Fabrication



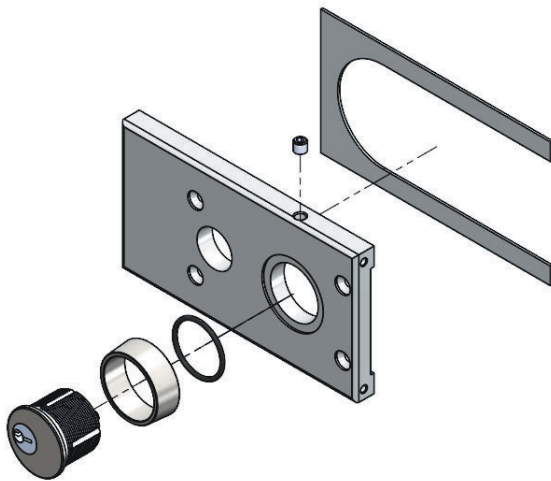
Glass Use



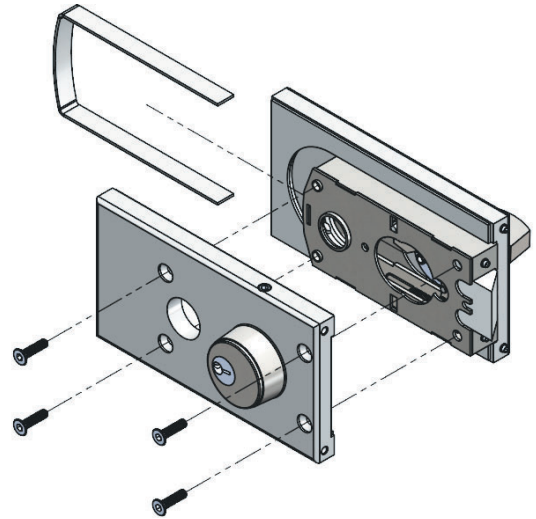
Monolithic Tempered Glass

Installation Guide

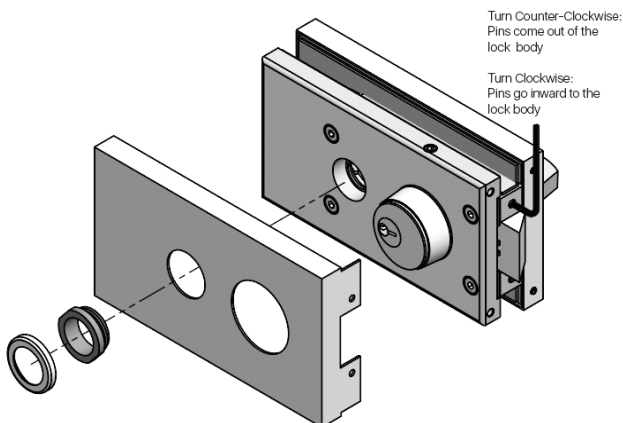
- 1-1 Assemble the cylinder/thumbturn, trims, and o-rings to lock housings, then tighten by set screws.
- 1-2 Glue gaskets onto lock housings.



- 2-1 Glue the gasket around edges of the lock.
- 2-2 Assemble lock housings to the lock



- 3-1 Assemble covers to the lock body
- 3-2 Tighten white plastic locking nuts then place cover caps.
- 3-3 Use hex wrench to properly turn pins counter-clockwise to fix covers in place



- 4-1 Install the lever handle to the Studio Lock. The handle with the square spindle is exterior.
- 4-2 Secure the lever handle by tightening the set screw from interior

