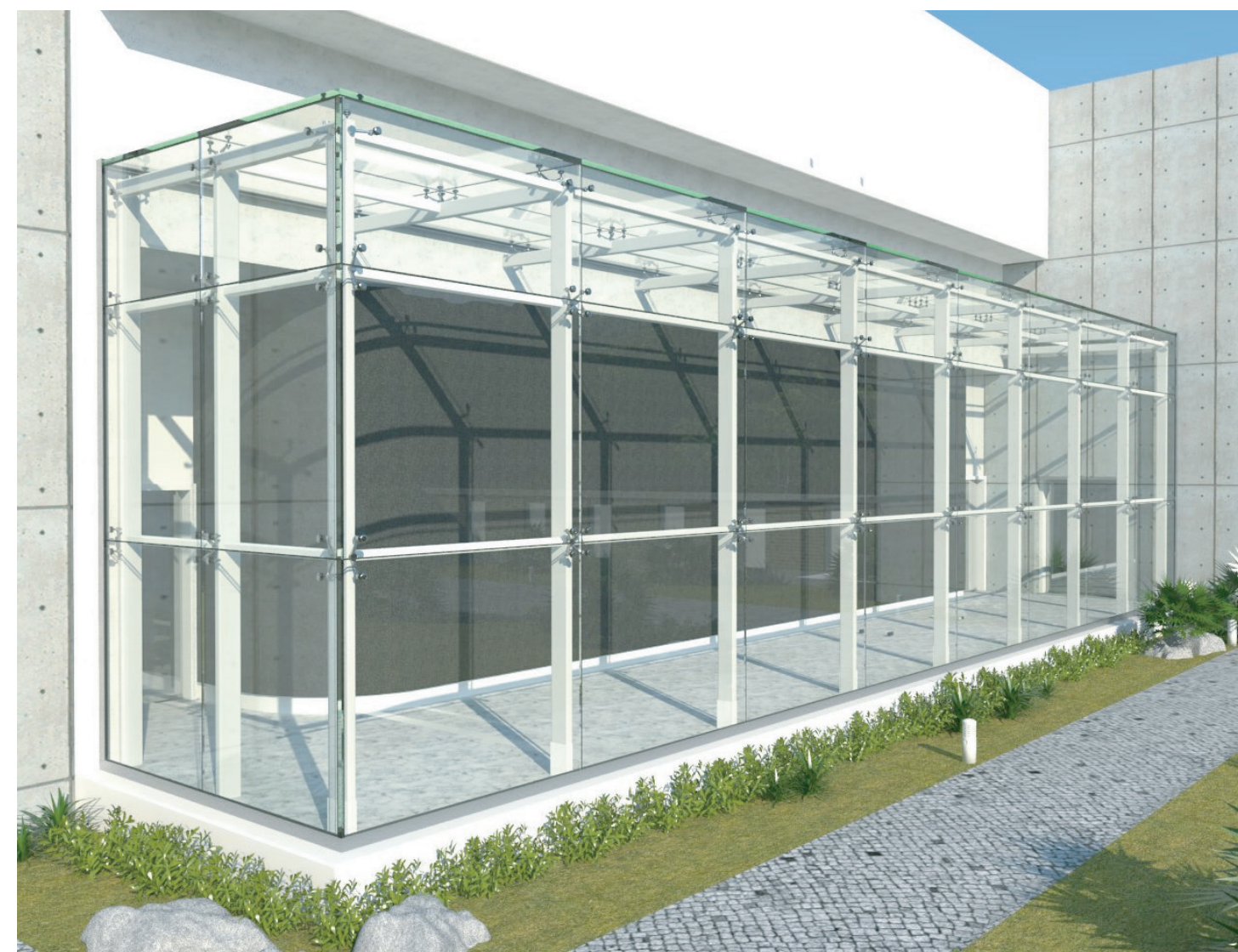


VOLUME 3 - GWSFMA SYSTEM

EPCO POINT SUPPORTED SYSTEM

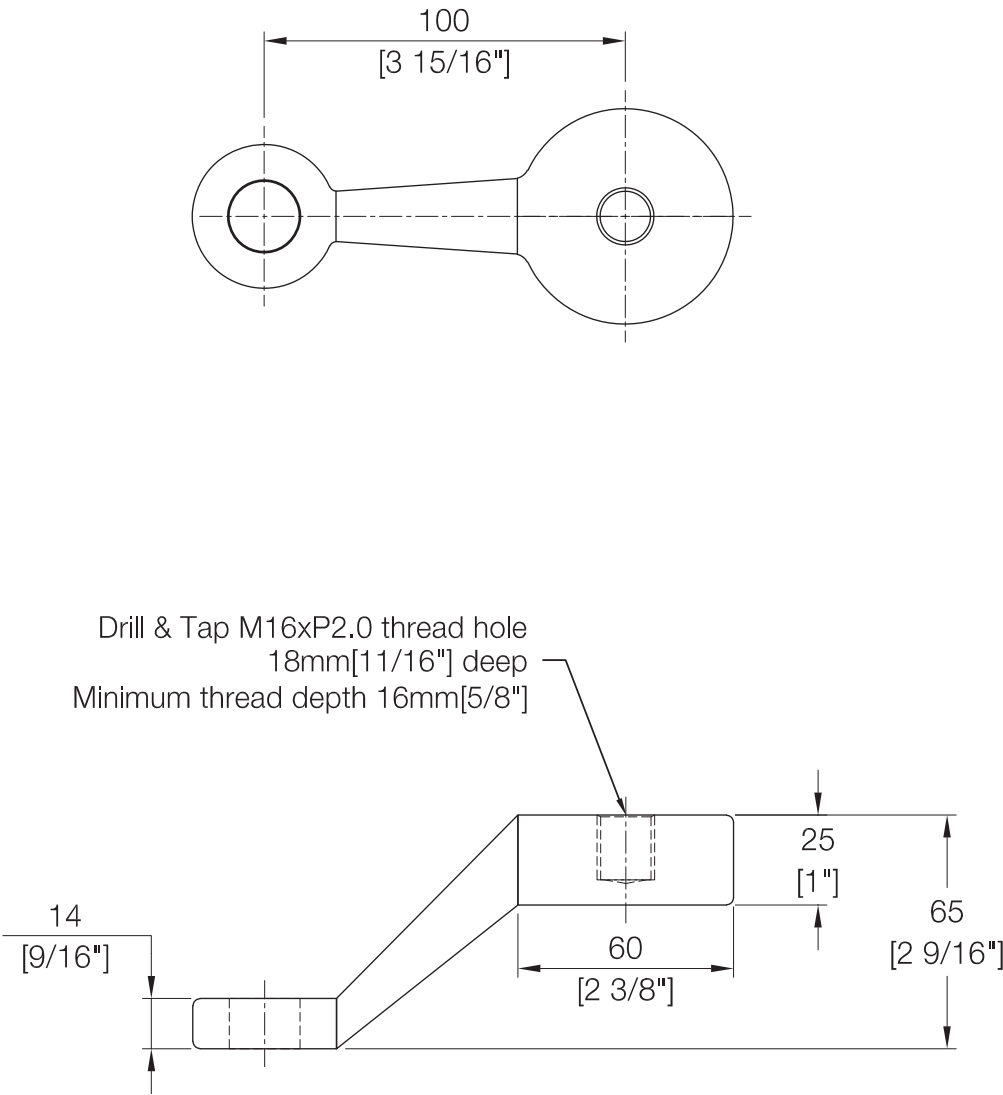


1 Way Glass Connection



GWSFMA - 1

Product Dimensions

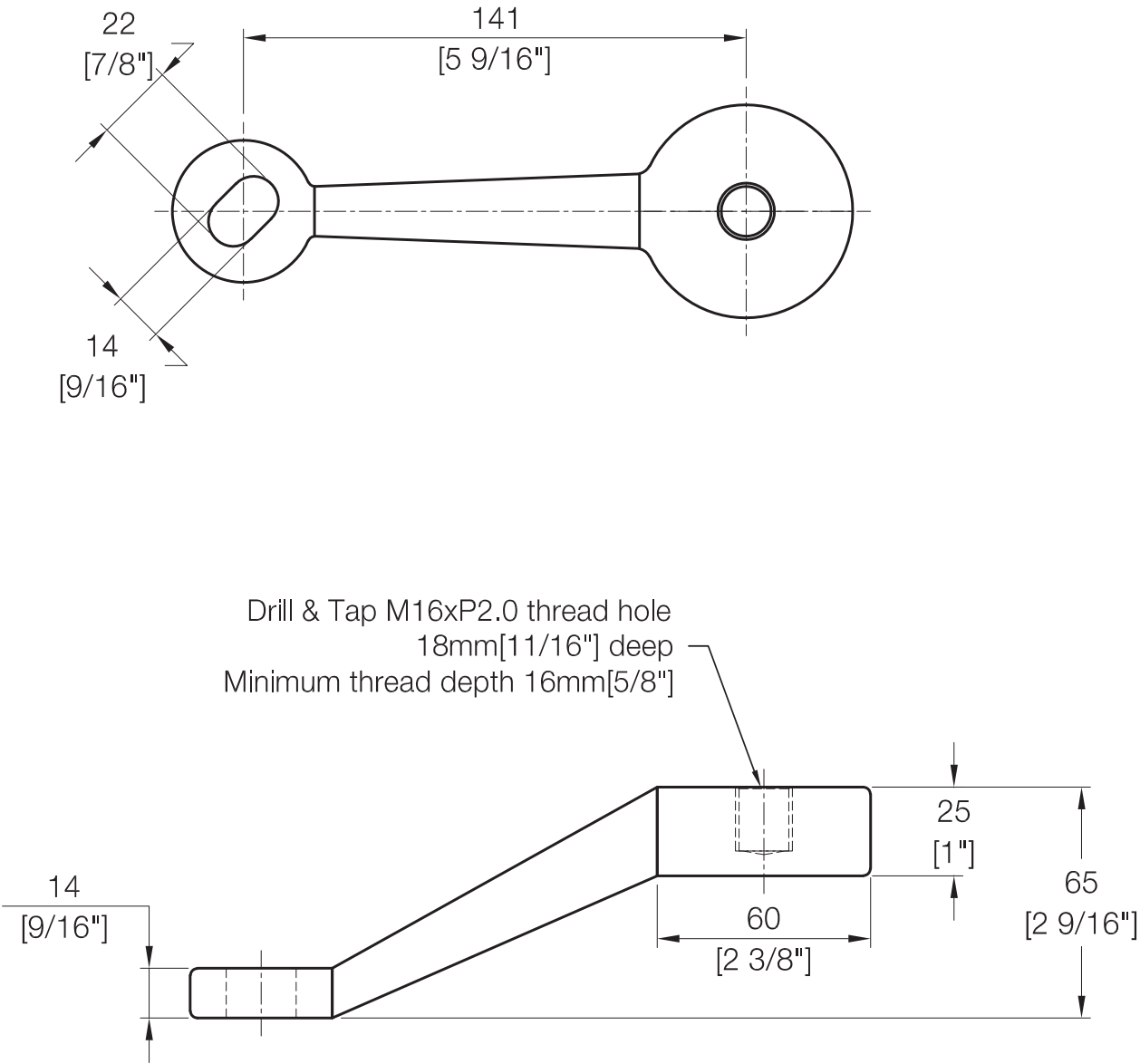


1 Way Glass Connection



GWSFMA - 2/1

Product Dimensions

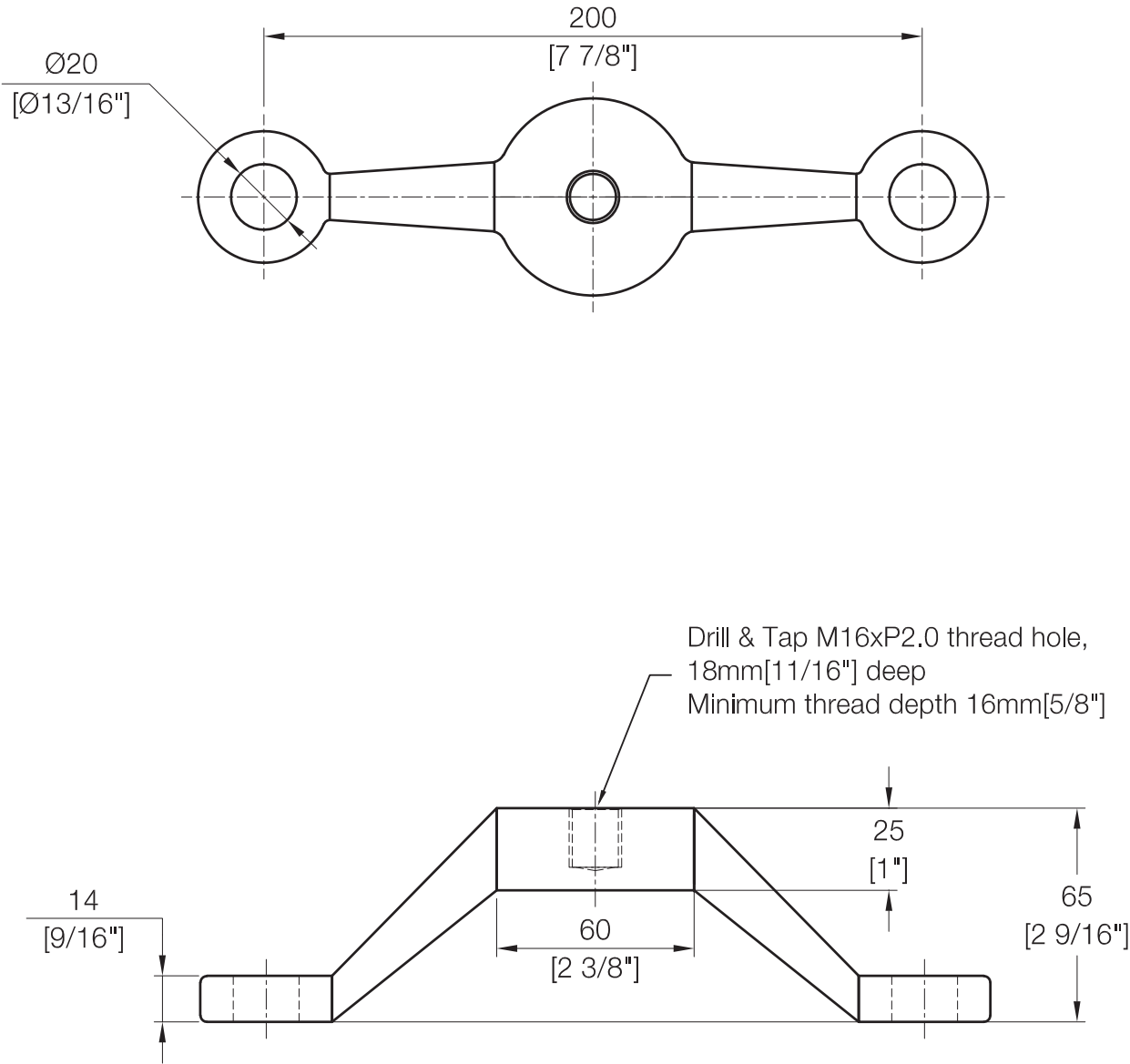


2 Way Glass Connection

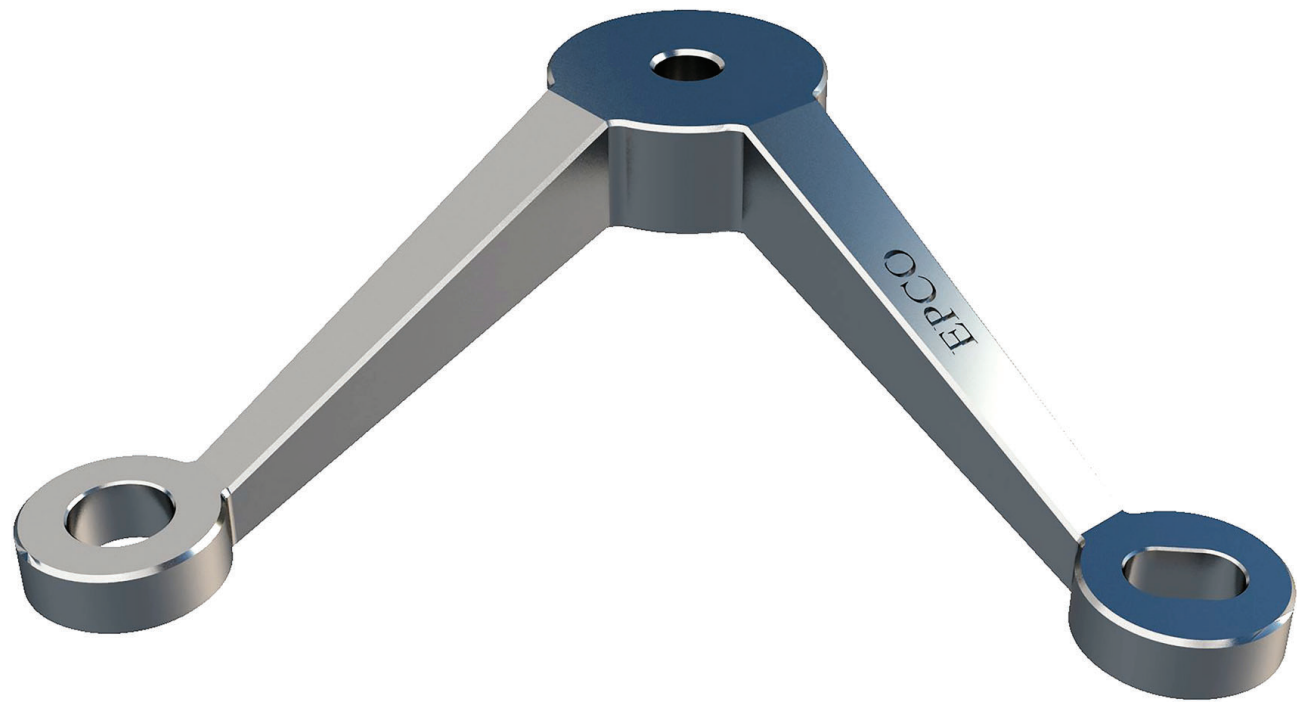


GWSFMA - 2

Product Dimensions

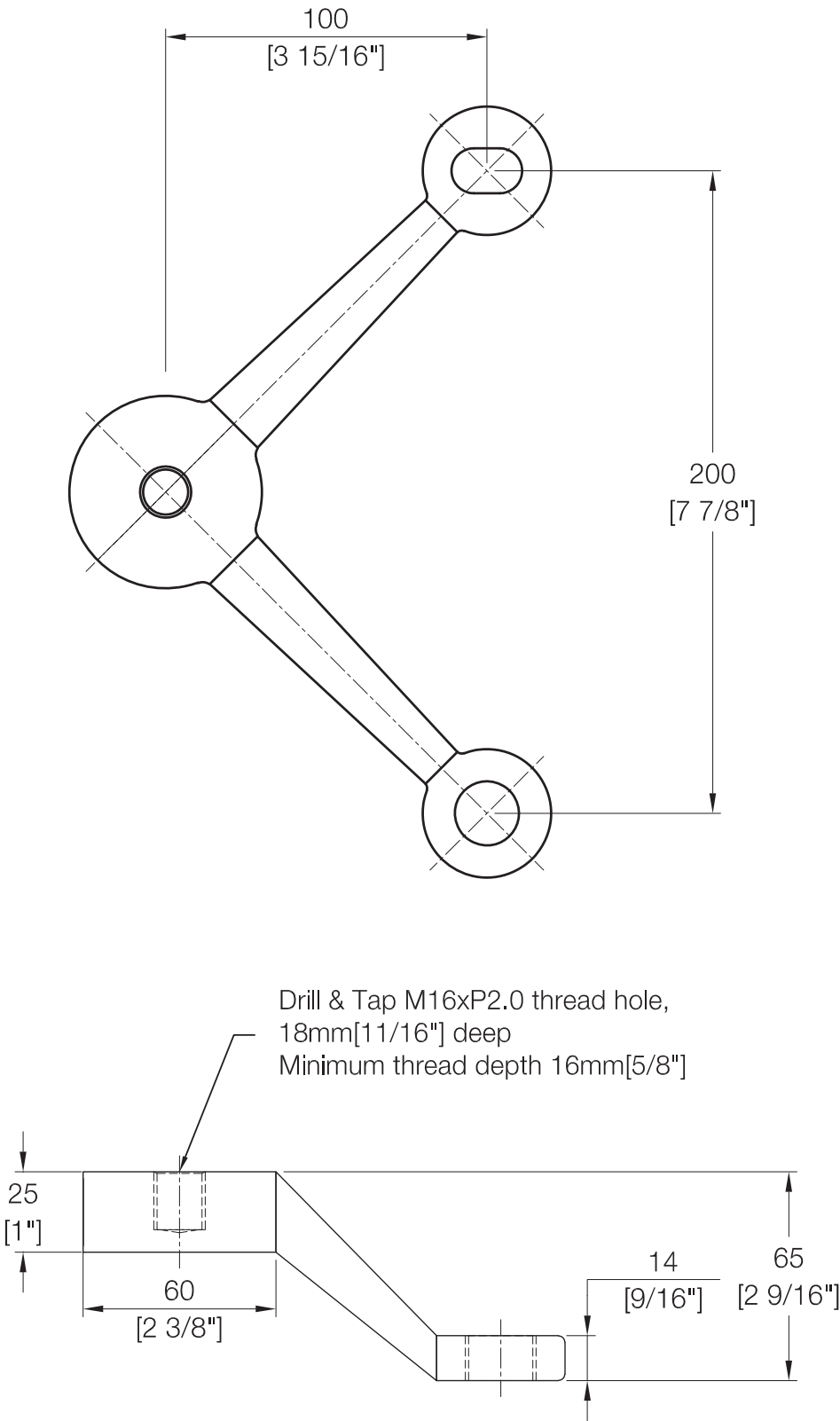


2 Way Glass Connection

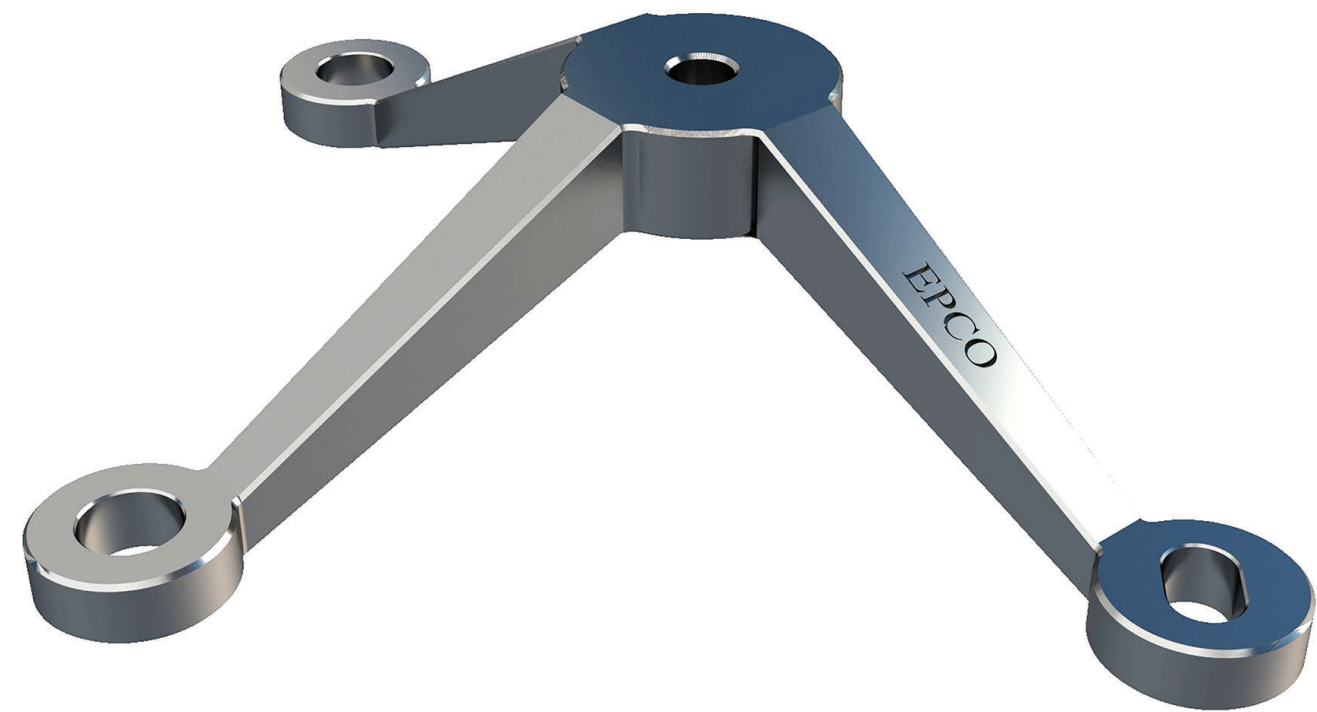


GWSFMA - 4/2/90

Product Dimensions

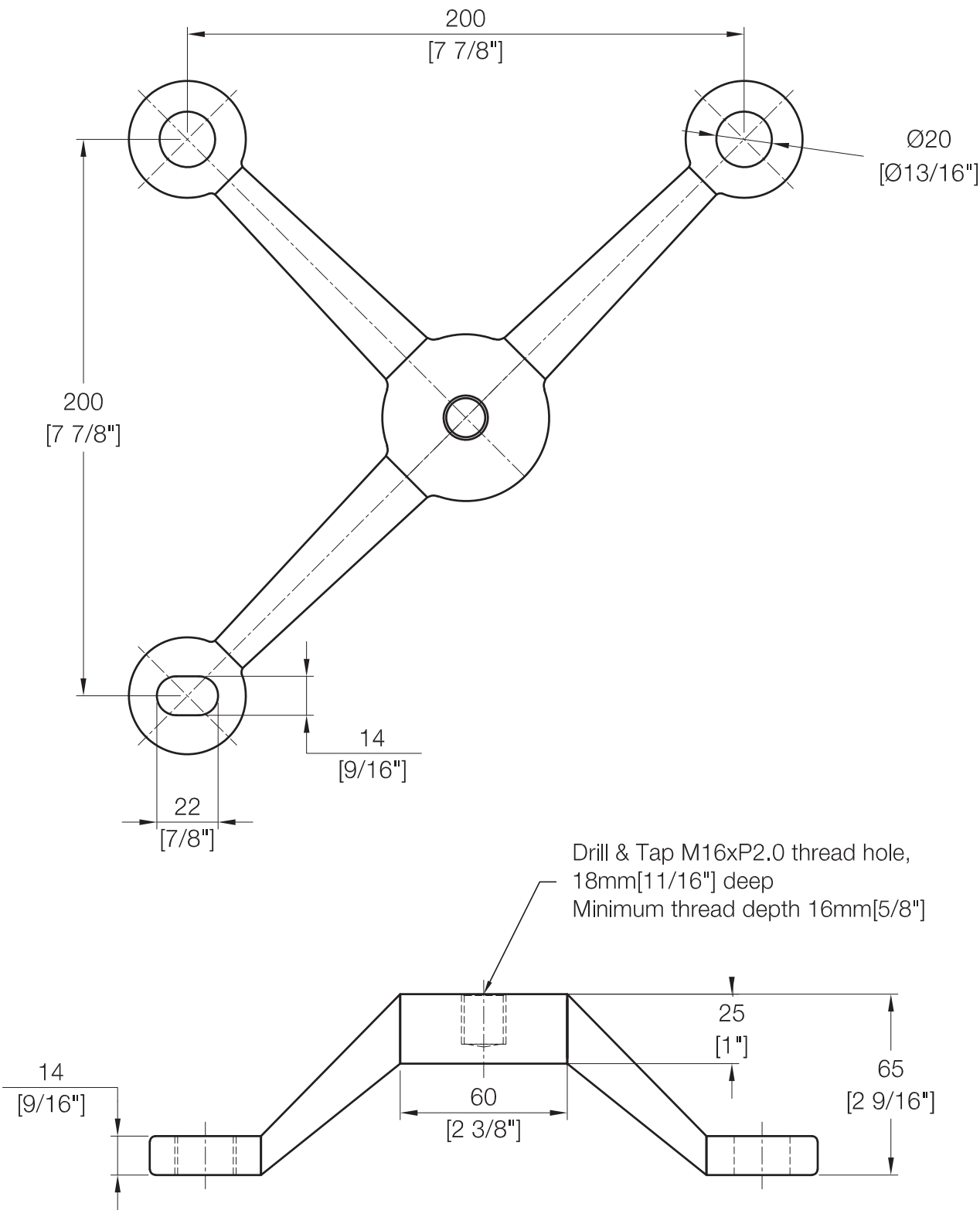


3 Way Glass Connection



GWSFMA - 3

Product Dimensions

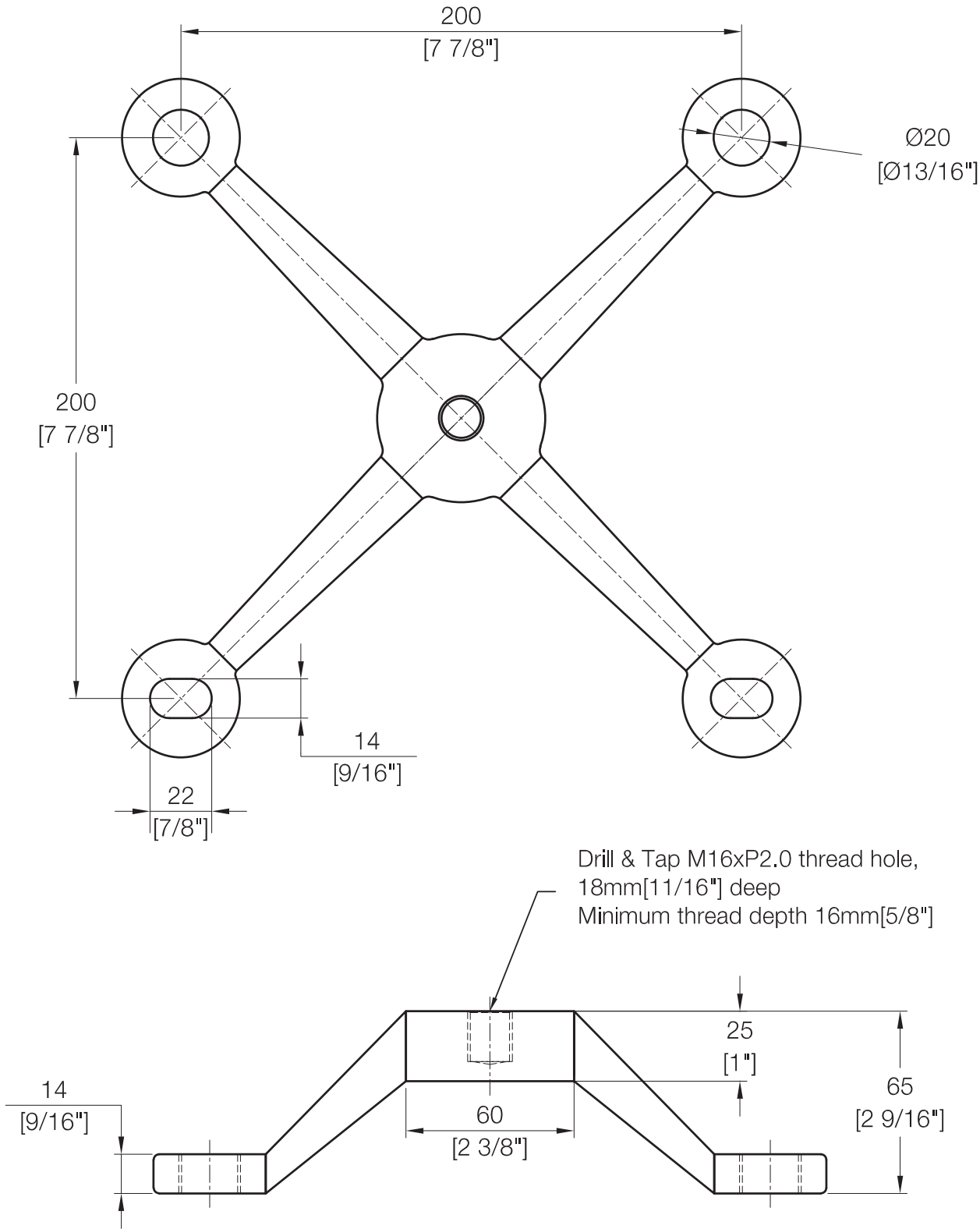


4 Way Glass Connection



GWSFMA - 4

Product Dimensions



Reference

Product Information:

- Material: 316 Grade Stainless Steel
- Glass Thickness: 12mm ~ 38mm
- Bolt Assembly Type: 2.11, 2.3D, 2.3D IG, 2.1, 2.11 and 2.3 IG
- Glass Hole: Required
- Finish: Stainless Polished, Stainless Satin, Dark Bronze, and Matte Black

Product Finishes:

Stainless Polished (SP)

Dark Bronze (DB)

Stainless Satin (SS)

Matte Black (MB)

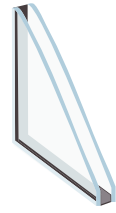
Glass Uses:



Monolithic Glass



Laminated Glass



Insulating Glass

* For use with [Tempered Glass Only](#)

Product Uses:



Steel Tube



Steel Pipe



I Beam

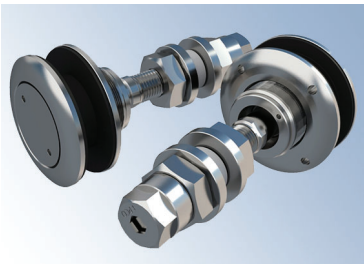


Cable Truss

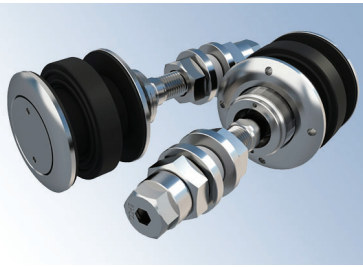
Bolt Assemblies:



2.11 Flat Head
Fixed Bolt Assembly



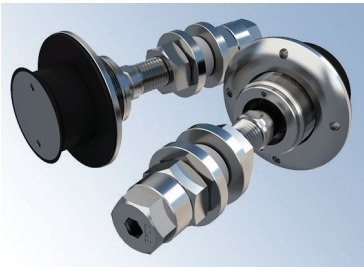
2.3D CS/OD
Articulated Bolt Assembly



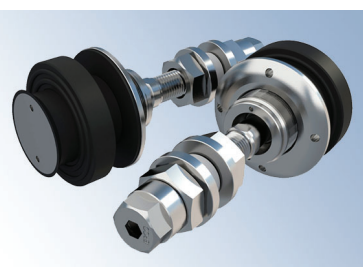
2.3D IG CS/OD/IG
Articulated Bolt Assembly



2.1 Countersunk
Fixed Bolt Assembly



2.3 Countersunk
Articulated Bolt Assembly

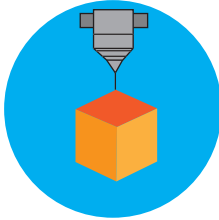


2.3 IG Countersunk/IG
Articulated Bolt Assembly

Key Services:



Design/Conceptual Drawings



3D Molding



Solutions with customers' comments
and field conditions



Engineering and Calculation



2D/3D Shop Drawings and
Detailing



Fabrication Drawings and Part
Manufacturing

EPCO Point Supported Systems

- GPK System
- GWPFA Fin Fitting System
- GWSFMA Structural Fitting System
- Single Point Fixing System
- Tension Rod System
- Patch Fitting System
- Notch-Less Glass Wall System

