

## VOLUME 7 - Notch-Less Glass Wall System

# EPCO POINT SUPPORTED SYSTEM

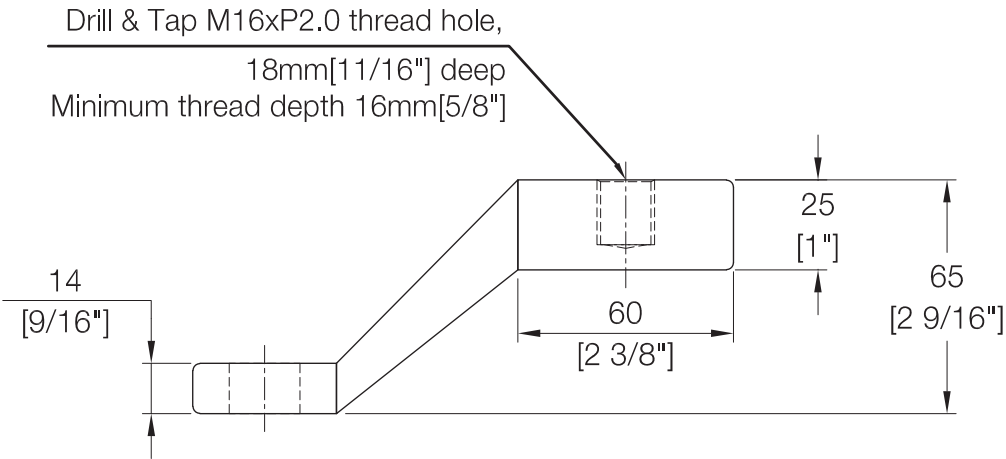
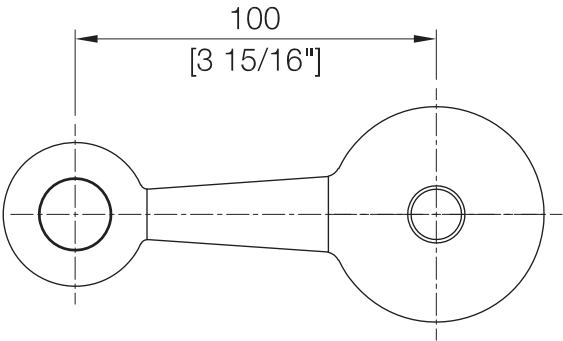


# 1 Way Glass Connection



GWSFMA - 1

## Product Dimensions

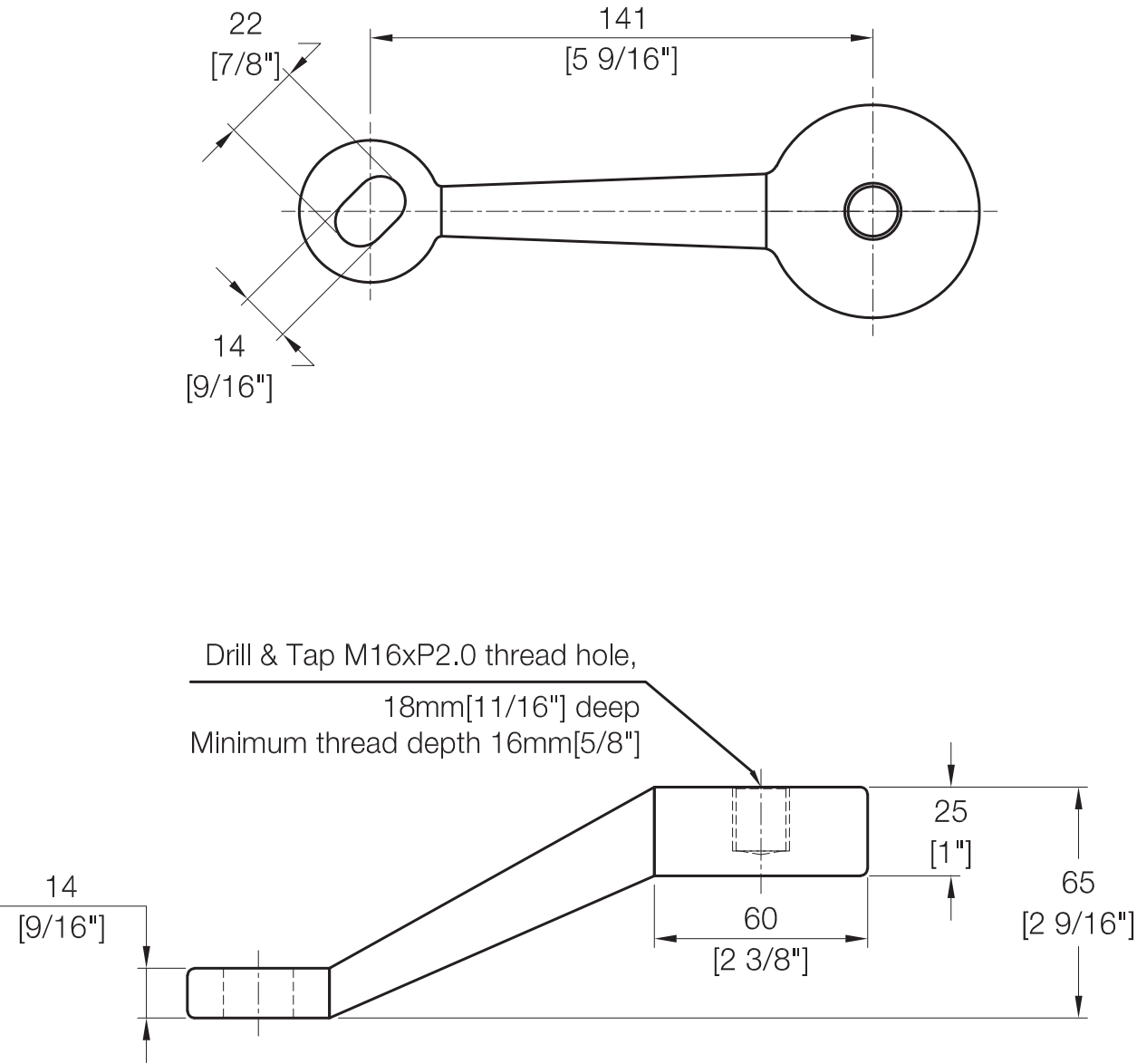


# 1 Way Glass Connection



GWSFMA - 2/1

## Product Dimensions

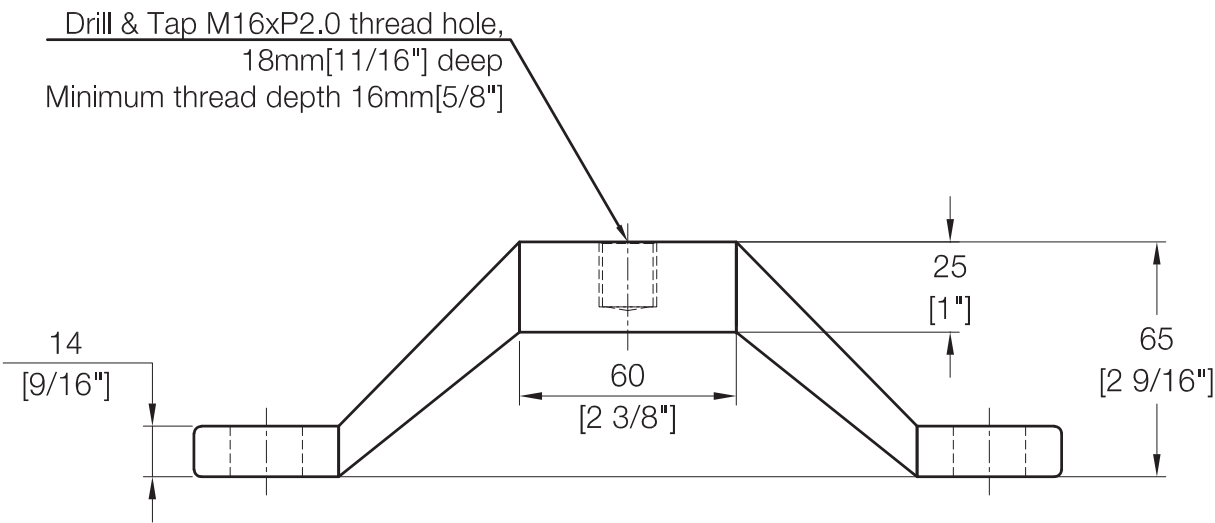
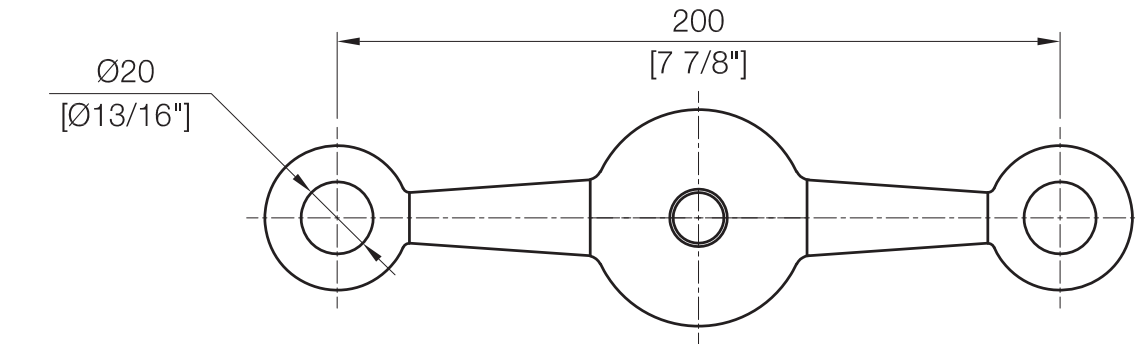


# 2 Way Glass Connection

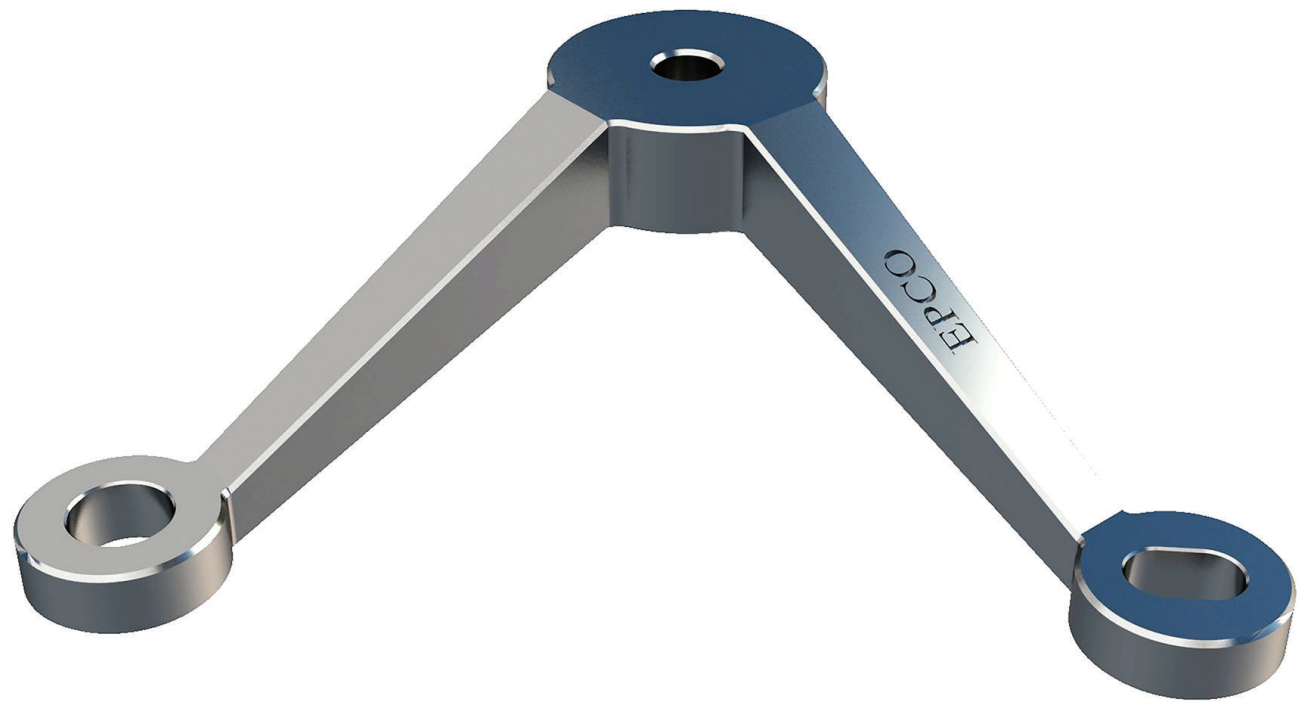


GWSFMA - 2

## Product Dimensions

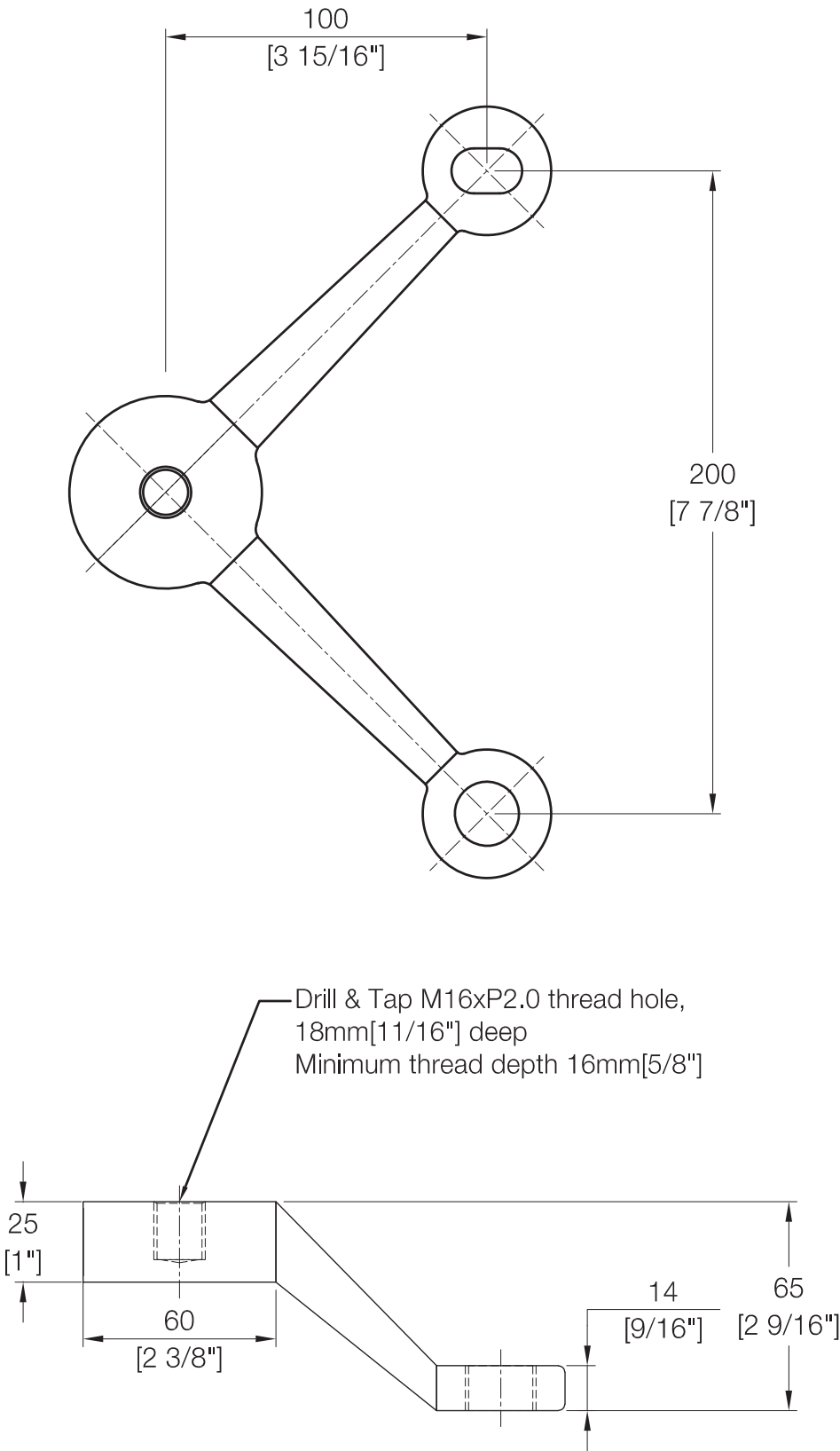


# 2 Way Glass Connection



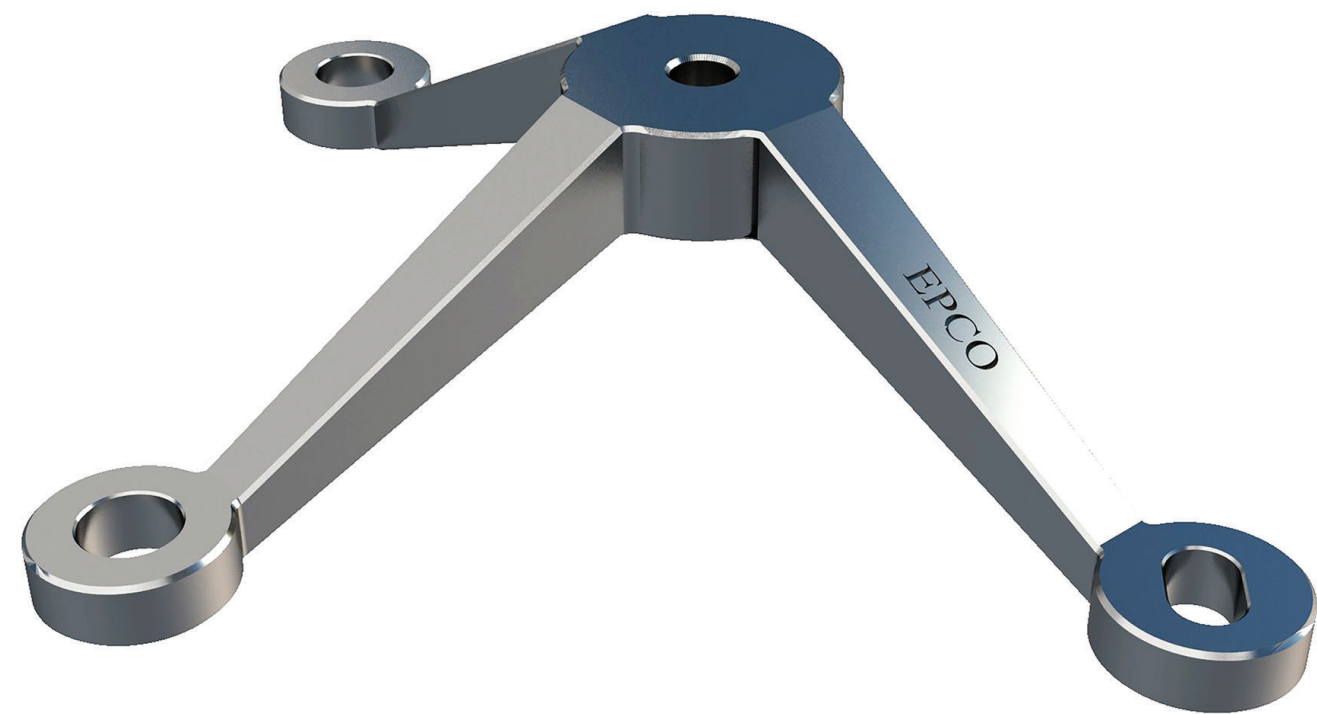
GWSFMA - 4/2/90

## Product Dimensions



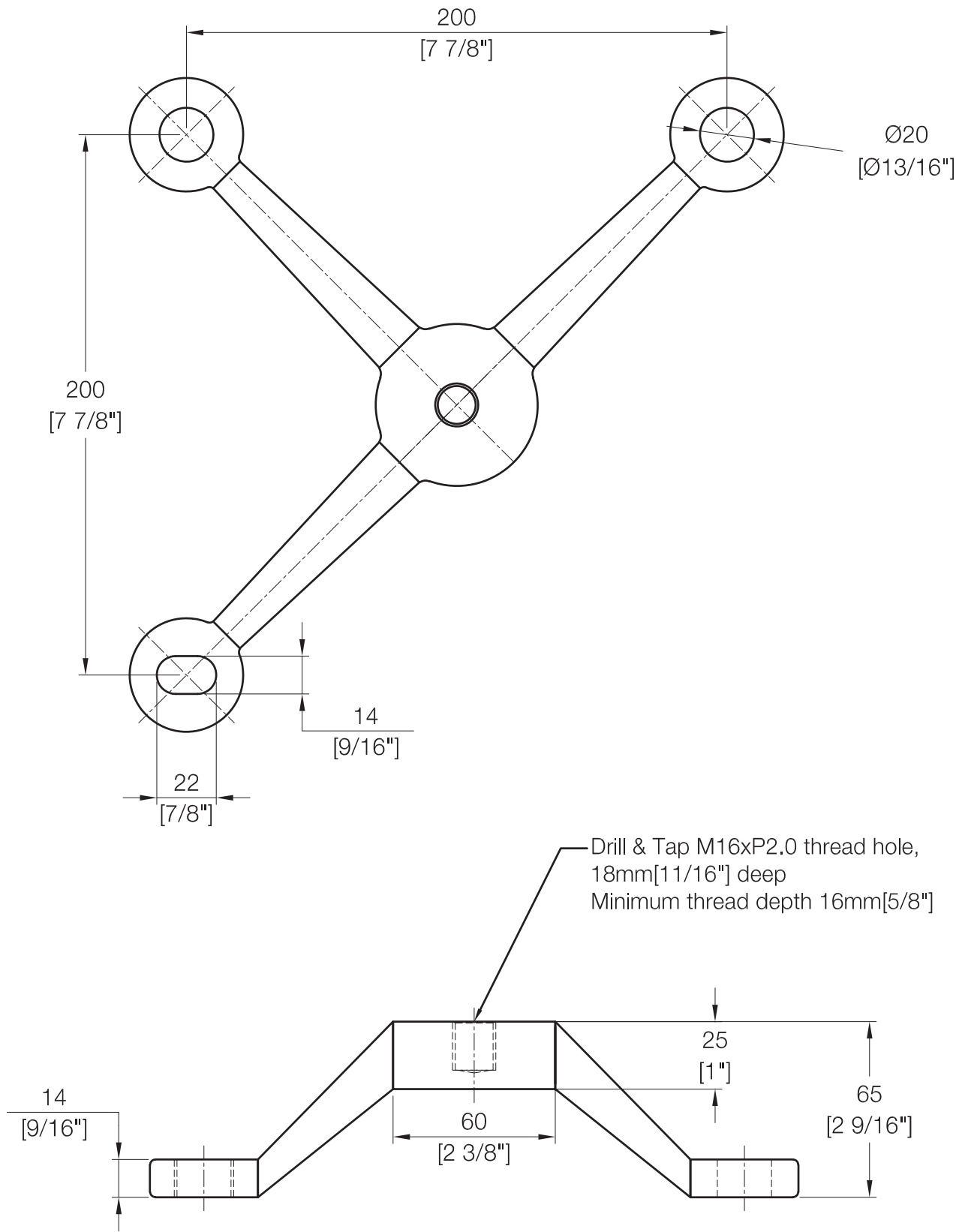


# 3 Way Glass Connection



GWSFMA - 3

## Product Dimensions

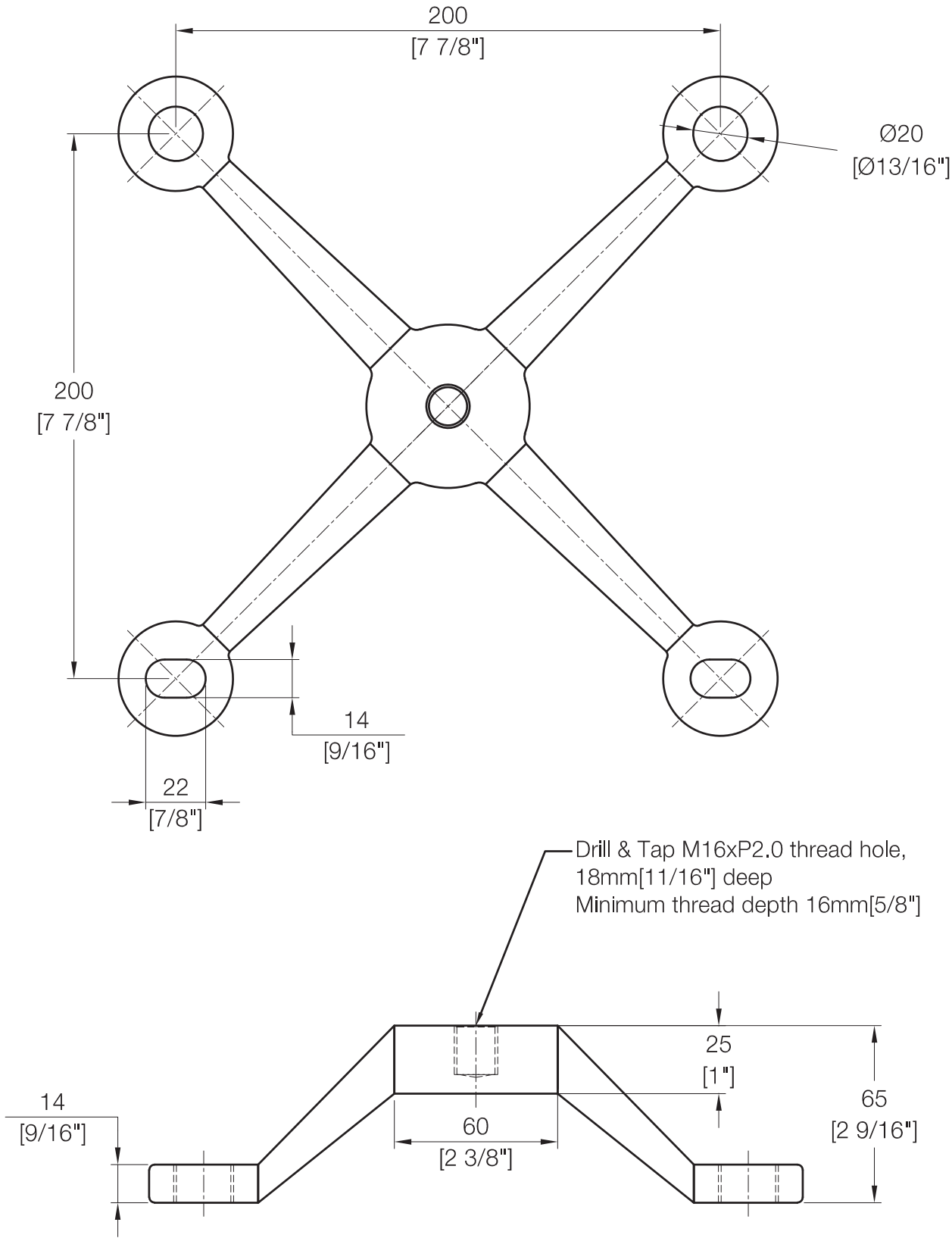


# 4 Way Glass Connection



GWSFMA - 4

## Product Dimensions



# Reference

## Product Information:

- Material: 316 Grade Stainless Steel
- Glass Thickness: 25mm ~ 38mm IG
- Bolt Assembly Type: 2.6 IG
- Glass Hole: Not Required
- Finish: Stainless Polished, Stainless Satin, Dark Bronze, and Matte Black

## Product Finishes:



Stainless Polished (SP)



Dark Bronze (DB)



Stainless Satin (SS)



Matte Black (MB)

## Glass Uses:



Insulating Glass

\* For use with [Tempered Glass Only](#)

## Bolt Assemblies:



2.6 IG Bolt Assembly

## Product Uses:



Steel Tube



Steel Pipe

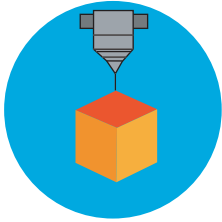


I Beam

## Key Services:



Design/Conceptual Drawings



3D Molding



Solutions with customers' comments and field conditions



Engineering and Calculation



2D/3D Shop Drawings and Detailing



Fabrication Drawings and Part Manufacturing



## EPCO Point Supported Systems

- GPK System
- GWPFA Fin Fitting System
- GWSFMA Structural Fitting System
- Single Point Fixing System
- Tension Rod System
- Patch Fitting System
- Notch-Less Glass Wall System

