

SHKD CLASSIC

SEMI-FRAMELESS BYPASS SLIDING SHOWER DOOR HARDWARE

SHKD14



Two Doors Bypass
Sliding open door from left or right



SHKD CLASSIC

SEMI-FRAMELESS BYPASS SLIDING SHOWER DOOR HARDWARE

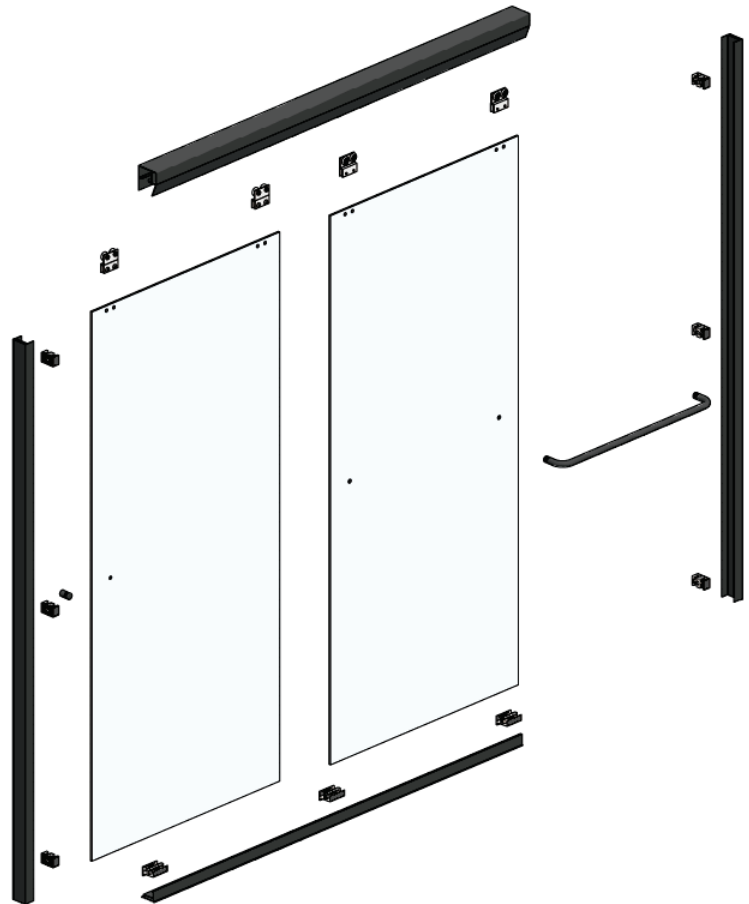


PRODUCT SPECIFICATION



Maximum Size:

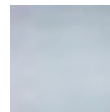
- 60" W x 72" H (1.52m x 1.83m)
- 72" W x 72" H (1.52m x 1.83m)



PRODUCT INFORMATION

- KD features for two bypassing sliding doors (Glass not included in the KD)
- Use with 1/4" (6mm) Tempered Glass only
- Aluminum Extrusions, Stainless Single Sided Towel Bar and Knob, or Flush Pull
- Maximum Header & Sill Track Length: 60" (1.52m) or 72" (1.83m)
- Maximum Vertical Jamb Length: 72" (1.83m)
- Glass Fabrication: Required

FINISH OPTIONS



BRITE ANODIZED

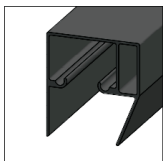


BLACK

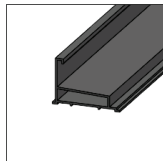


BRUSHED SILVER

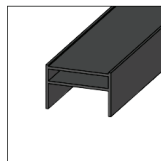
HARDWARE CONTAINS



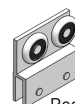
Header Track (Qty. 1)



Sill Track (Qty. 1)



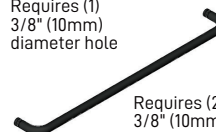
Vertical Jamb (Qty. 2)



Hangers (Qty. 4)

Requires (2)
3/8" (10mm)
diameter holes

Requires (1)
3/8" (10mm)
diameter hole



Single Sided Towel Bar &
Knob (Qty. 1 of each)

Requires (2)
3/8" (10mm)
diameter holes



Jamb Bumpers (Qty. 6)



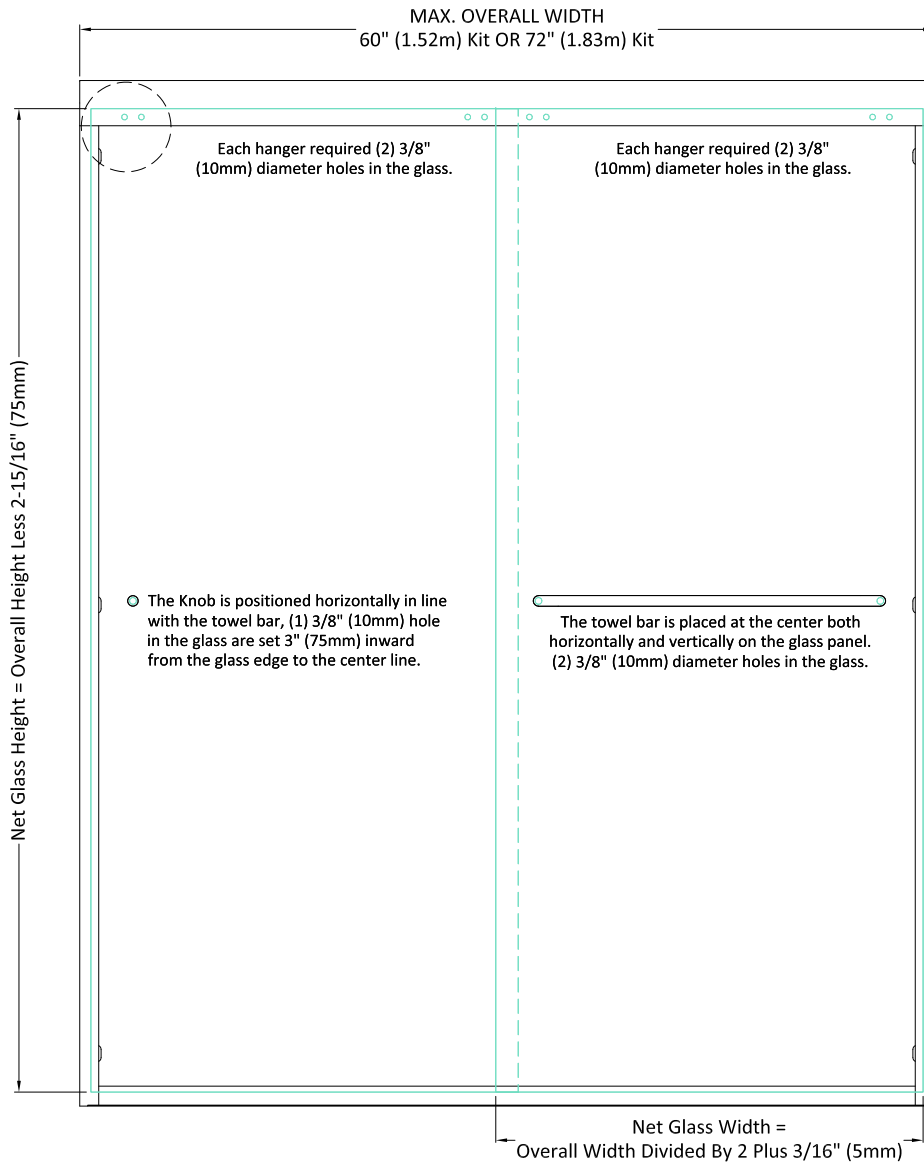
Bottom Guide (Qty. 3)

SHKD CLASSIC

FRAMELESS BYPASS SLIDING SHOWER DOOR HARDWARE



DIMENSIONS



Aluminum Extrusions Cutting Formula:

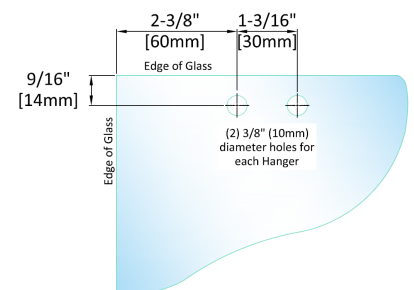
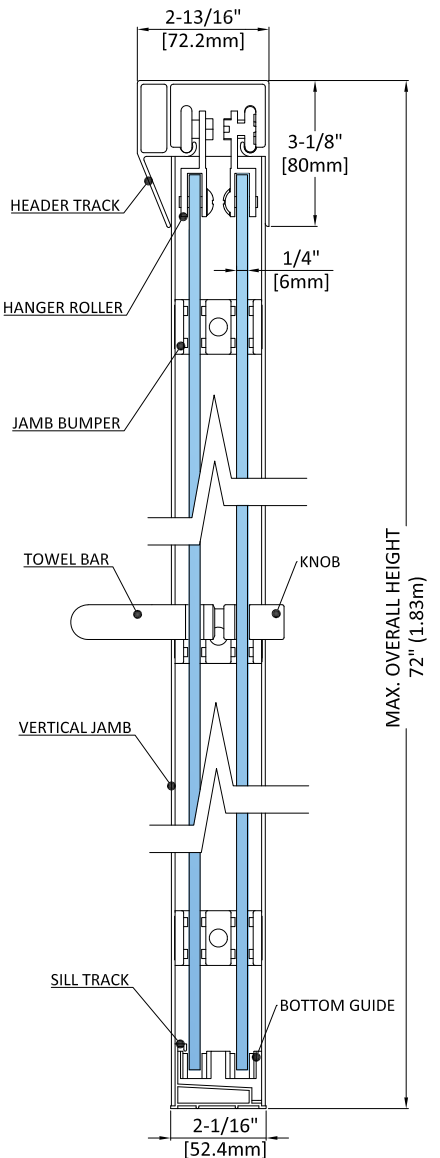
Header Track = Top Width Measurement Less 1/16" (1.5mm)
Sill Track = Bottom Width Measurement Less 1-3/16" (30mm)
Vertical Jamb = Overall Height Less 9-9/16" (40mm)

Glass Size Formula:

Net Glass Width = Overall Width Divided by 2 Plus 3/16" (5mm)
Net Glass Height = Overall Height Less 2-15/16" (75mm)



USE ONLY MONOLITHIC TEMPERED GLASS



HANGER GLASS CUTOUT