



OCEANIA **DELUXE**

SINGLE SLIDING SHOWER DOOR HARDWARE

KLS-02.6





OCEANIA DELUXE

FRAMELESS SINGLE SLIDING SHOWER DOOR HARDWARE

Product Information

- Stainless Steel hardware
- For 3/8" (10 mm) and 1/2" (12 mm) tempered glass
- Easy install for 56 1/2" - 60" (1435.1 mm - 1524 mm) wide opening without cutting bar
- Adjustable 2 - 3/16" (55 mm) smooth glide rollers and anti-lift pins
- Innovative track holders allow you to fabricate glass holes wherever best fit your needs
- Reversible floor guide for left and right hand configurations
- Super Easy Install, Easy Adjust, and more durable

Product Finish Options



Polished S/S

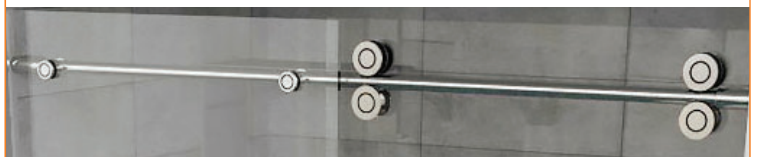


Brushed S/S



Matte Black

Product Detail Image



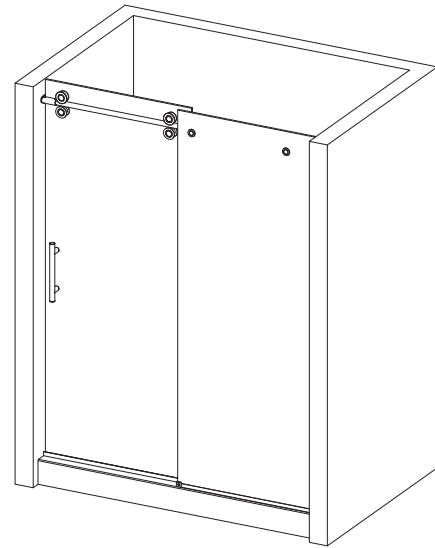
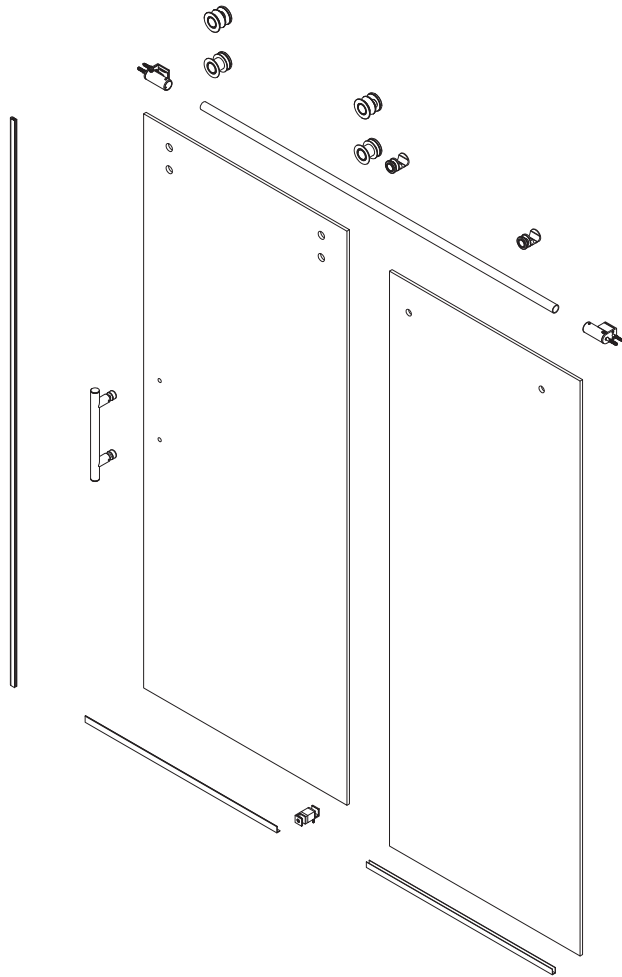
Product Features



OCEANIA DELUXE

FRAMELESS SINGLE SLIDING SHOWER DOOR HARDWARE

Product Specification



Standard KD

to fit 56 1/2" to 60" (1435.1 mm - 1524 mm)
wide opening, 84" (2133.6 mm) tall panels.
For 3/8" and 1/2" (10 mm and 12 mm) glass.

Capacity:

- Maximum Door Weight: 100 LBS (45 KG)
- Maximum Door Width: 39" (990 mm)
- Maximum Door Height: 83 5/8" (2124 mm)

Hardware Contains

- 1 ea – 1"(25 mm) Dia Track Bar @ 55" (1397 mm) in length
- 2 ea – 2-3/16"(55 mm) Dia Smooth Glide Roller
- 2 ea – Anti-Lift Faux Roller
- 2 ea – Track Holder
- 1 ea – Wall Fixing with Black Grippers
- 1 ea – Wall Fixing with Black Bumper

- 1 ea – Ladder Pull with Knobs SHK-8K
- 1 ea – Floor Guide 07-136

Options:

- 1 ea – U-Chanel for 3/8"(10 mm) Fixed Panel
- 1 ea – Bulb Seal for 3/8"(10 mm) Glass
- 1 ea – L-Seal

✉ info@epcocorp.com

🌐 www.epcocorp.com

© Copyright 2023 EPCO Architectural Hardware (USA) Inc. - All rights reserved.



EPCO
ARCHITECTURAL
HARDWARE
SOLUTIONS