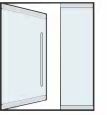


EPCO DR300 SERIES

INNOVATIVE DR300 DOVETAIL DESIGN

DRY GLAZE DOOR RAIL



Glass Pivoting Door



MODEL OPTIONS:

- DR304S - 4" Square Door Rail
- DR304SL - 4" Square Door Rail w/ Lock
- DR304T - 4" Tapered Door Rail
- DR304TL - 4" Tapered Door Rail w/ Lock

Contact Us: info@epcocorp.com

www.epcocorp.com

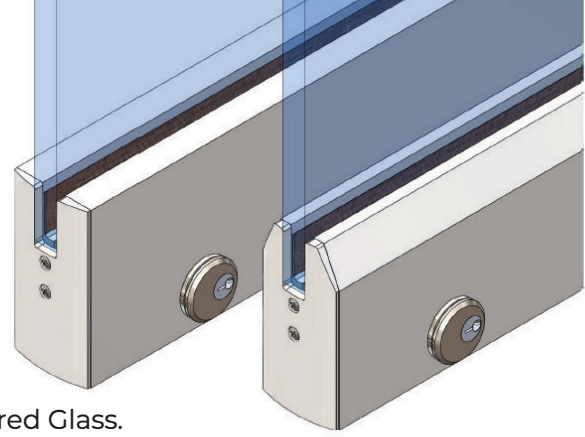


EPCO USA
ARCHITECTURAL
HARDWARE
SOLUTIONS

EPCO DR300 SERIES

INNOVATIVE DR300 DOVETAIL DESIGN

DRY GLAZE DOOR RAIL



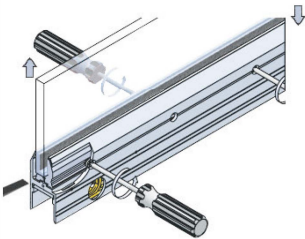
- For 12 mm (1/2") Monolithic Tempered or 14 mm (9/16") Laminated Tempered Glass.
- Available with or without Lock (Keyed Cylinders, and Thumbturns are sold separately).
- Available in Polished Stainless, Brushed Stainless and Matte Black Finishes, or upon requests.

PRODUCT FEATURES:

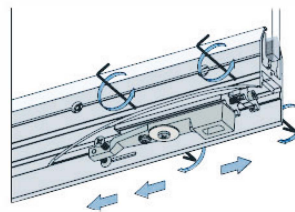
- A single one piece body profile and two self-centering clamps are assembled through patent pending Dovetail design.
- Dovetail design allows adjusting glass panel without removing the door installed.
- 25 mm (1") Glass Bite increases holding strength for securing the glass in the door rail.
- EPCO Slide Pads(ESP) for SUPER EASY Adjustment and Installation.
- ESP design allows adjusting the position of door without removing the door installed.
- ESP design provides flexibility to locate hardware in the door rail needed.
- Hassle free changeable Slide Covers for different finishes, styles or replacement.
- Easiest adjustment and fastest installation time of any door rail system offered in the industry
- Less cost and more time savings for future maintenances.
- EPCO follows GANA Guidelines for maximum door height and width.

SUPER EASY ADJUSTMENT:

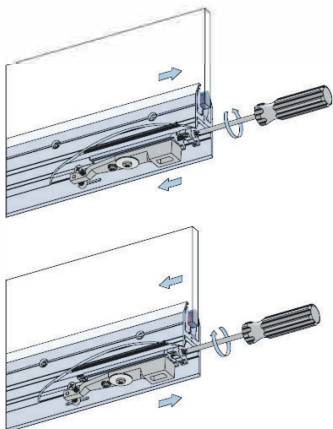
After the door is installed all you need to do to adjust the door is to remove the End Cap and Cover.



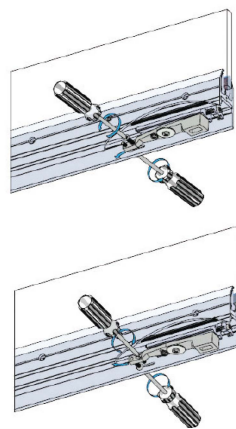
Each DR300-Dovetail Door Rail allows for vertical adjustment of plus up to 1/4" with door rail setting blocks/shims.



Adding hardware without interfering with internal components to function such as sliding/ folding and sliding /stacking systems.



EPCO Slide Pads provide 3/4" adjustment for pivot alignment and allow the pivots to be moved to a position other than the American Standard Setback of 70 mm (2-3/4").

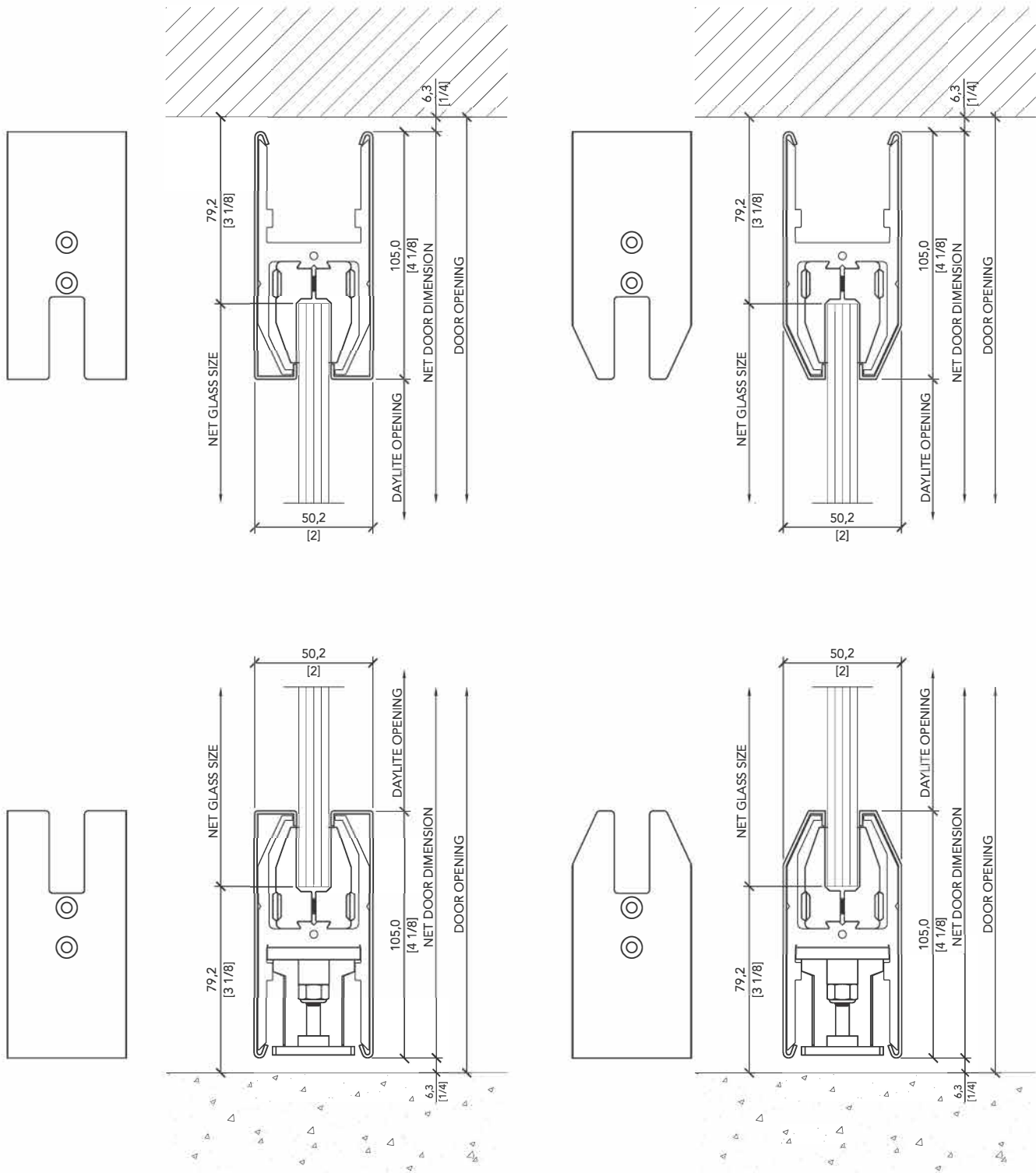


Adjust door to close at zero position by adjusting screws from shorten arm (sold separately) without removing the door.



- Arms and Pivots (sold separately) must meet job requirements.

DR304S/DR304T DIMENSIONS



MODEL OPTIONS:

DR304S - 4" Square Door Rail

DR304T - 4" Tapered Door Rail

DR304SL - 4" Square Door Rail w/ Lock

DR304TL - 4" Tapered Door Rail w/ Lock

DR300 DOVETAIL DESIGN DRY GLAZE DOOR RAIL WITH ESP