

# ATLANTIC

FRAMELESS BY-PASS SLIDING SHOWER DOOR

Dual  
Soft Stop

**RSS203**



# ATLANTIC

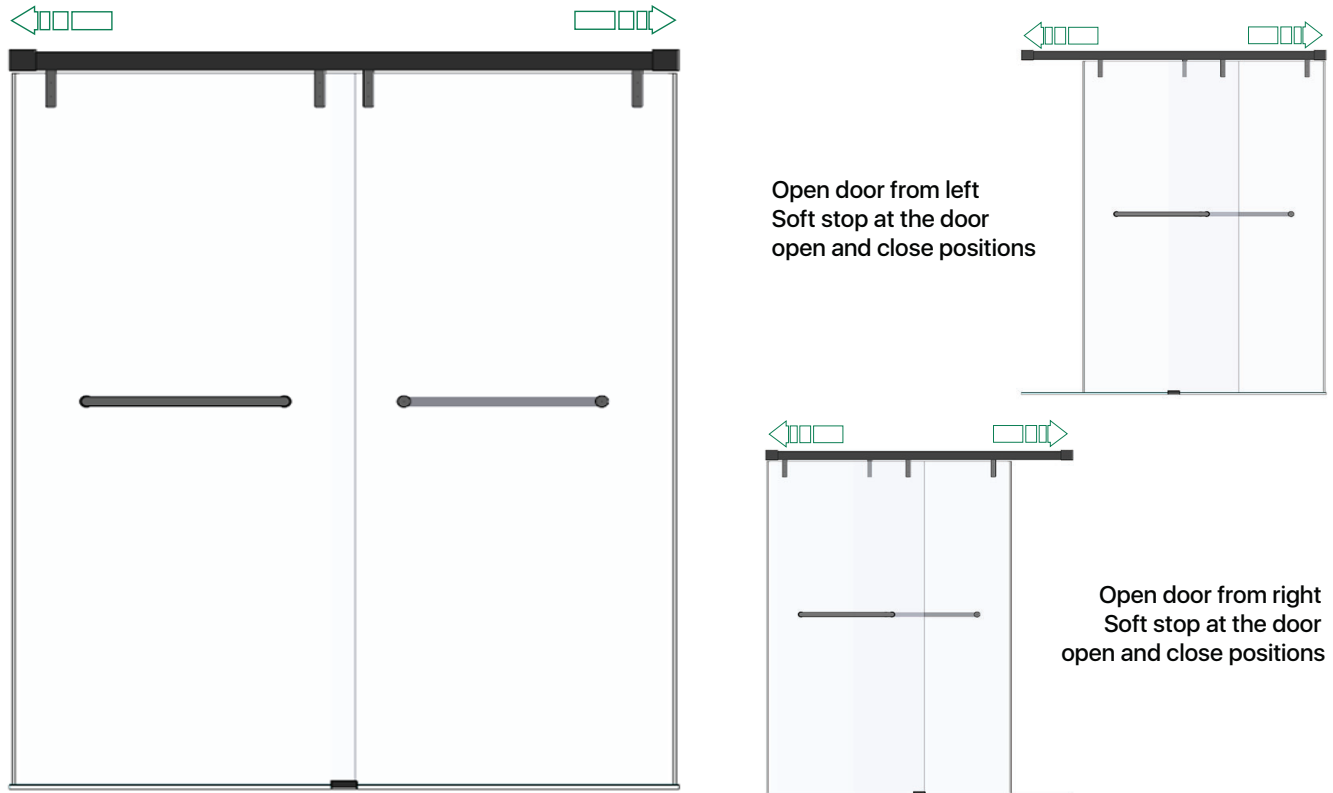
## FRAMELESS BY-PASS SLIDING SHOWER DOOR

Dual  
Soft Stop

### PRODUCT HIGHLIGHTS

A slim header, semi-hidden rollers, and a soft-stop system, creating a space-saving, and safe solution.

The soft-stop system ensures a smooth quiet close every time and prevents doors from slamming shut or bouncing back.






### PRODUCT INFORMATION

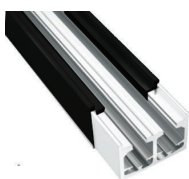
- For 3/8" Tempered Glass
- Aluminum Header, Electrophoresis
- Stainless Steel Brake Metal
- Soft stop/Gentle close System
- Stainless Steel Hardware
- Open door from left or right
- Reversible shower door header

- **CAPACITY:**  
Maximum Door Weight:  
38 KG (84 LBS)  
Maximum Door Width:  
838 mm (33")  
Maximum Door Height:  
1854 mm (73")

### FINISH OPTIONS

-  POLISHED S/S
-  BRUSHED S/S
-  MATTE BLACK

### DETAIL IMAGE



HEADER TRACK



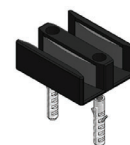
HANGER



DAMPER



WALL FIXING



FLOOR GUIDE



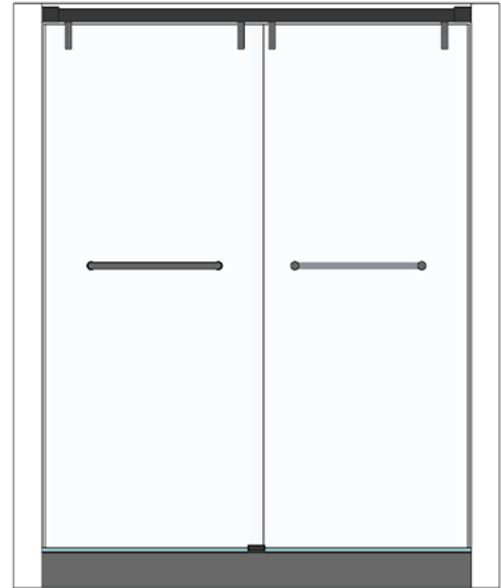
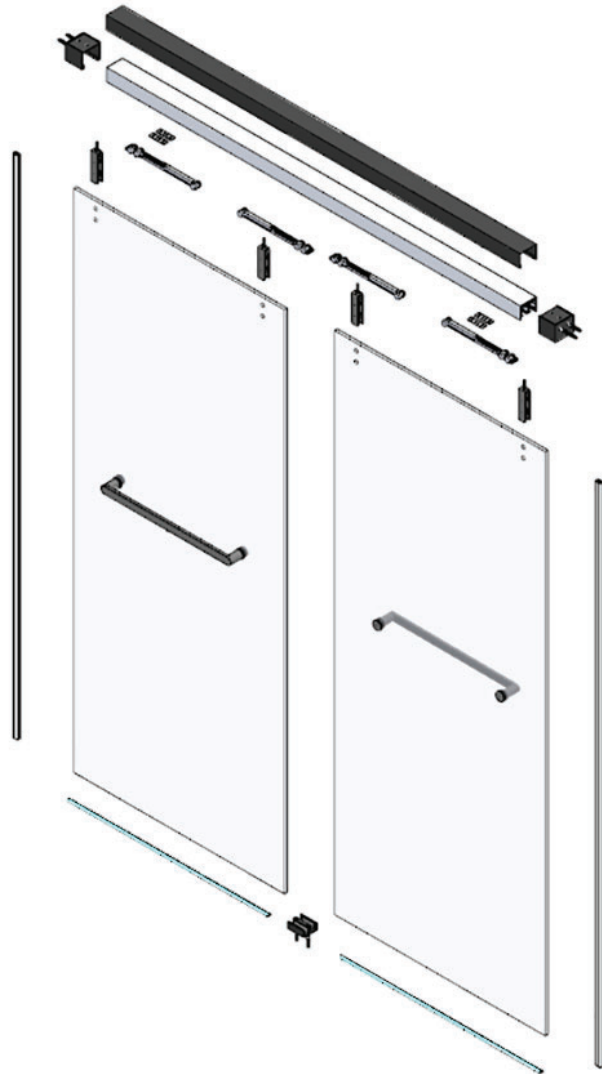
TOWEL BAR

# ATLANTIC

FRAMELESS BY-PASS SLIDING SHOWER DOOR

Dual  
Soft Stop

## PRODUCT SPECIFICATION



### OPENING SIZES:

- Fits openings width between 1406 mm (55-3/8") to 1625 mm (64")
- Finished door height up to 1930 mm (76")
- Threshold/Curb Depth Requirement for installation: 50mm (2")

## HARDWARE CONTAINS

1 ea - Aluminum Header Track  
1 ea - Stainless Steel Cladding  
4 ea - Glass Hanger/Roller  
4 ea - Soft Stop Kit/Damper  
2 ea - Wall Fixing  
1 ea - Floor Guide

2 ea - Towel Bar  
2 ea - Bulb Seal  
2 ea - L Seal with Adhesive Tape  
1 ea - Screws & Plastic Anchors Pack

### Customization available:

Hangers, handles, and towel bars can be changed to a different style upon request.

✉ info@epcocorp.com

🌐 www.epcocorp.com

☎ +1 (323) 451-2688



EPCO USA  
ARCHITECTURAL  
HARDWARE  
SOLUTIONS

© Copyright 2023 EPCO Architectural Hardware (USA) Inc. - All rights reserved.