

ATLANTIC

SEMI-FRAMELESS BY-PASS SLIDING SHOWER DOOR

Dual
Soft Stop

RSS201



ATLANTIC

SEMI-FRAMELESS BY-PASS SLIDING SHOWER DOOR

Dual
Soft Stop

PRODUCT IMAGE



A slim header, sleek profile, semi-hidden rollers, and a soft-stop system, creating a space-saving, and safe solution.

The soft-stop system ensures a smooth quiet close every time and prevents doors from slamming shut or bouncing back.

Wall-mounted bumpers to hold glass panels in place. Accommodate out-of-plumb by 10 mm (3/8")

The L-shaped bottom track reduces water splashing and keeps it stay inside the shower that prevents it from leaking out.

PRODUCT INFORMATION

- For 3/8" Tempered Glass
- Aluminum Header, Electrophoresis
- Stainless Steel Brake Metal
- Soft stop/Gentle close System
- Open door from left or right
- Reversible shower door header
- 100,000 Cycle Testing

FINISH OPTIONS



POLISHED S/S



MATTE BLACK

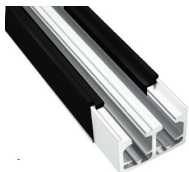


BRUSHED S/S

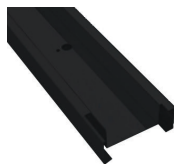


BRUSHED BRASS

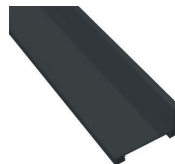
DETAIL IMAGE



HEADER TRACK



WALL JAMB



BOTTOM TRACK



HANGER



DAMPER



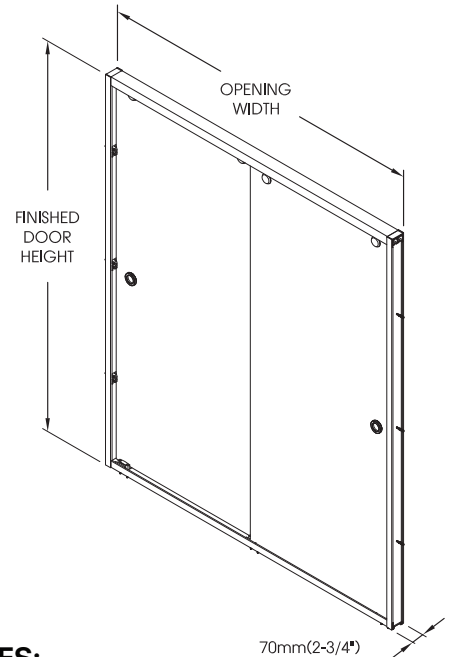
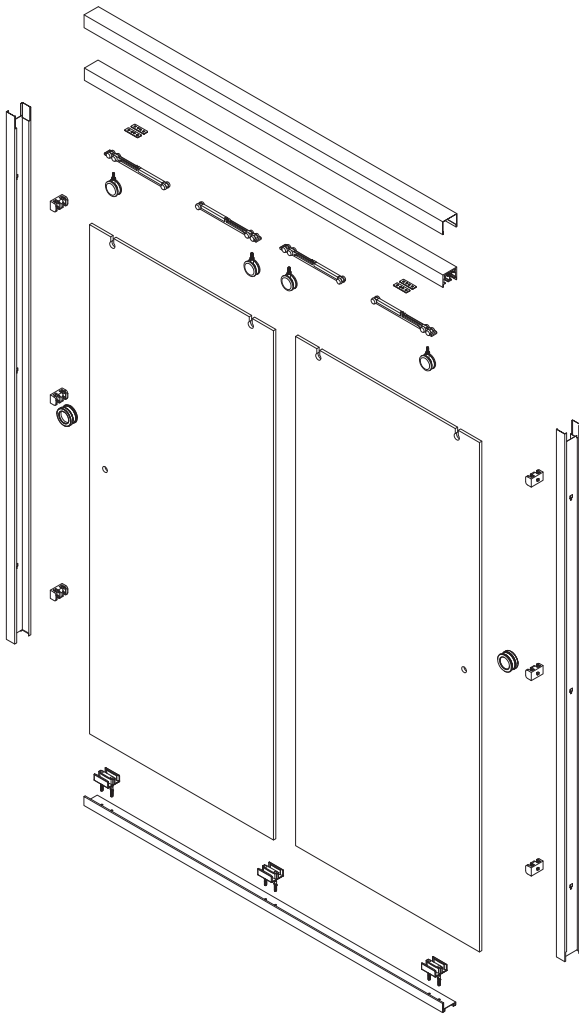
FLUSH PULL

ATLANTIC

SEMI-FRAMELESS BY-PASS SLIDING SHOWER DOOR

Dual
Soft Stop

PRODUCT SPECIFICATION



OPENING SIZES:

- Fits openings width between 1406 mm (55-3/8") to 1625 mm (64")
- Finished door height up to 1930 mm (76")
- Threshold/Curb Depth Requirement for Installation: 70 mm (2-3/4")

CAPACITY:

- Maximum Door Weight: 38 KG (84 LBS)
- Maximum Door Width: 838 mm (33")
- Maximum Door Height: 1854 mm (73")

HARDWARE CONTAINS

1 ea - Aluminum Header Track
1 ea - Stainless Steel Cladding
2 ea - Vertical Jamb
1 ea - Bottom Track
4 ea - Glass Hanger/Roller
4 ea - Soft Stop Kit/Damper
6 ea - Wall-mounted Bumper

2 ea - Flush Pull 07-201-20
3 ea - Bottom Guide
1 ea - Screws & Plastic Anchors Pack

Customization available:

Hangers, handles, and towel bars can be changed to a different style upon request.

✉ info@epcocorp.com

🌐 www.epcocorp.com

☎ +1 (323) 451-2688



EPCO USA
ARCHITECTURAL
HARDWARE
SOLUTIONS

© Copyright 2023 EPCO Architectural Hardware (USA) Inc. - All rights reserved.