

# EPCO POINT FIXED BOLT FIXING



## EXPLORE OUR PRODUCT

Click the image to go to the product page



**2.1 FIXED  
Countersunk Bolt**



**2.1 IG FIXED  
Countersunk Bolt**



**2.11 FIXED  
Flat Head Bolt**



**2.11 IG FIXED  
Flat Head Bolt**



**2.3 Articulated  
Countersunk Bolt**



**2.3 IG Articulated  
Countersunk Bolt**



**2.3D Articulated  
Flat Head Bolt**



**2.3D IG Articulated  
Flat Head Bolt**



**2.3D-EX Articulated  
Flat Head Bolt**



**2.6 Articulated  
Flat Head Bolt**

Please contact us if you need additional product information!

 City of Industry, CA 91789

 +1 (323) 451-2688

 [info@epcocorp.com](mailto:info@epcocorp.com)

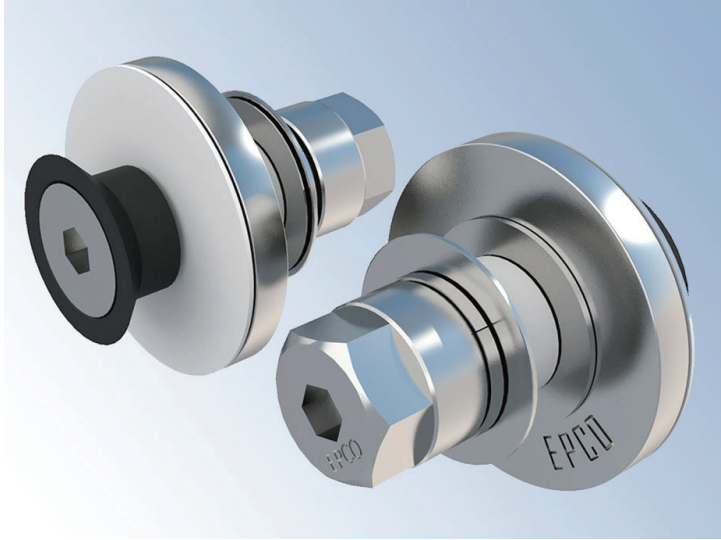
 [www.epcocorp.com](http://www.epcocorp.com)



**EPCO USA  
ARCHITECTURAL  
HARDWARE  
SOLUTIONS**

# EPCO POINT FIXED BOLT FIXING

## 2.1 FIXED COUNTERSUNK BOLT



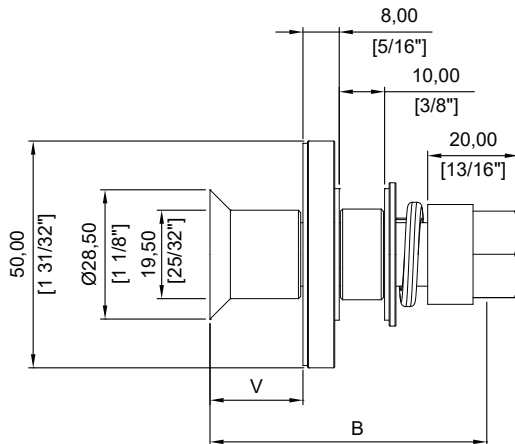
- Material: 316 Grade Stainless Steel
- Glass thickness: 10mm -21mm (3/8" - 13/16")
- Glass use: Tempered, Monolithic or Laminated
- Glass hole: Required
- Minimum glass thickness: Please refer to glass cutout sheet
- Finish: Stainless Polished, Stainless Satin, Dark Bronze and Matte Balck

### Finish Code

- SP : Stainless Polished
- SS : Stainless Satin
- DB : Dark Bronze
- MB : Matte Black

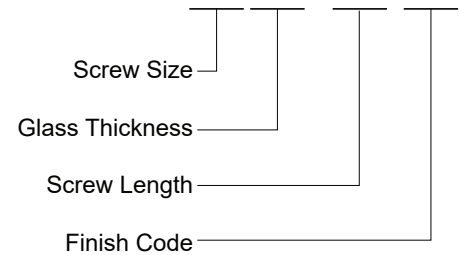
\* Other finish is available upon request

## Dimension



V = Glass Thick  
B = Screw Length

## 2.1-MXXXBXX-XX



UNIT: MM

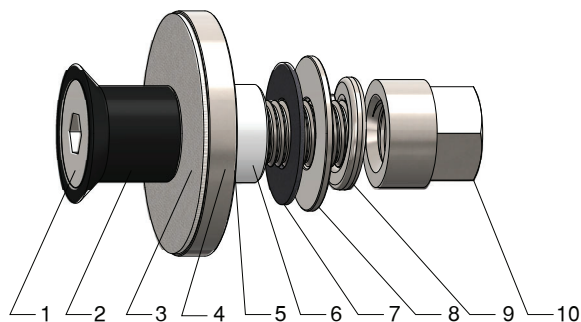
Code	Screw Size	V	B
2.1-M1010	M10	10	45
2.1-M1012	M10	12	45
2.1-M1215	M12	15	50
2.1-M1417	M14	17	55
2.1-M1419	M14	19	55
2.1-M1421	M14	21	60

\* For GWSFMA or thicker structure connection, longer screw may be required.

\*\* Custom-made size is available upon request.

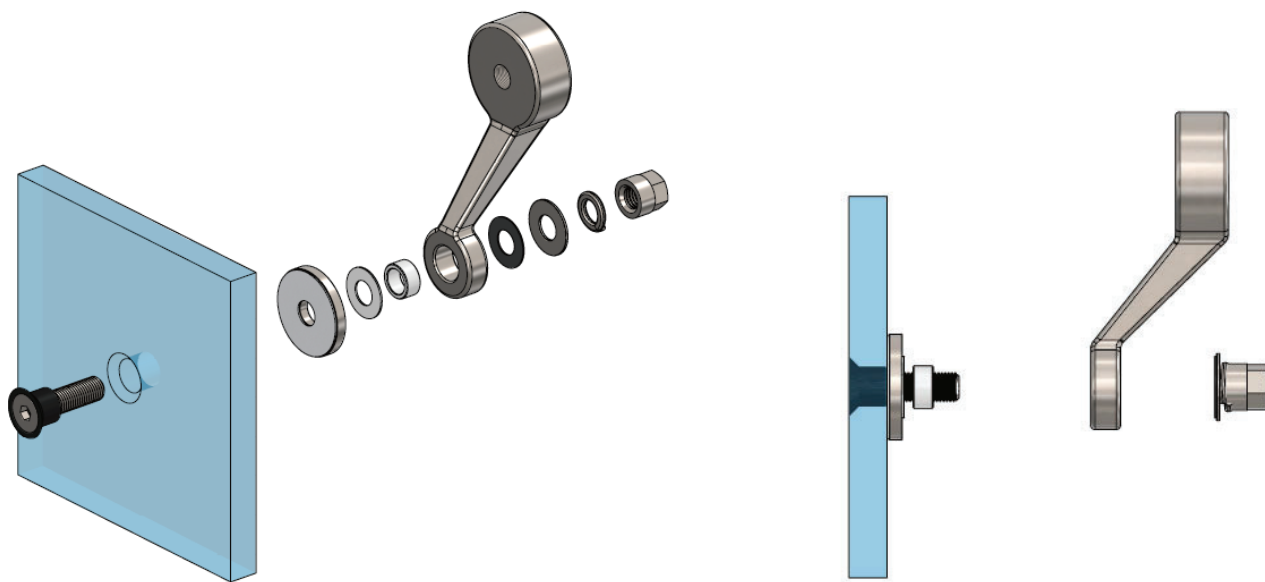
## EPCO POINT FIXED BOLT FIXING

### Component



Mark	Description	Material
1	Countersunk head hex socket screw	SUS316
2	Countersunk bushing $\varnothing 28.5 \times \varnothing 19.5$	POM(black)
3	Non-asbestos gasket $\varnothing 49 \times 1t$	Non-asbestos(white)
4	Locking washer $\varnothing 50 \times 6t$	SUS316
5	Silicone gasket $\varnothing 29 \times 1t$	Silicon (clear)
6	Bushing $\varnothing 20 \times 9.5L$	POM(black)
7	Non-asbestos gasket $\varnothing 29 \times 1t$	Non-asbestos(black)
8	Metal washer $\varnothing 31.6 \times 1.5t$	SUS304
9	Spring washer	SUS304
10	Cap nut	SUS316

### Installation Guideline



\*Loctite® is recommended on all screw threads during final assembly.

#### CLEAN AND MAINTENANCE WITH CARE:

ALWAYS use a soft clean cloth, clean water and a mild soap or mild liquid detergent. Rinse with a separate clean cloth and clean water. NEVER leave such as render/cement on the surface nor use harsh, abrasive, powder based or alkaline type cleaners.

# EPCO POINT FIXED BOLT FIXING

## 2.1 IG FIXED COUNTERSUNK BOLT



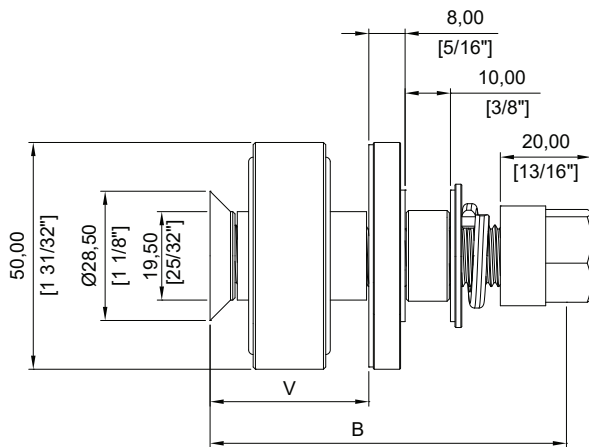
- Material: 316 Grade Stainless Steel
- Glass thickness: 28mm-38mm(1 1/8"- 1 1/2")
- Glass use: Insulating Tempered Glass
- Glass hole: Required
- Minimum glass thickness: Please refer to glass cutout sheet
- Finish: Stainless Polished, Stainless Satin, Dark Bronze and Matte Black

### Finish Code

- SP : Stainless Polished
- SS : Stainless Satin
- DB : Dark Bronze
- MB : Matte Black

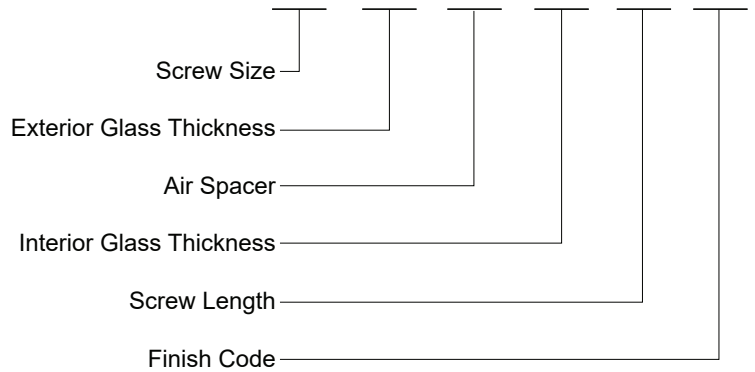
\* Other finish is available upon request

## Dimension



V = Glass Thickness = P1 + Air Spacer +P2  
P1 = Exterior Glass P2 = Interior Glass  
B = Screw Length

## 2.1-MXXDXXSXXDXXBXX-XX



UNIT: MM

Code	P1	Air Spacer	P2	V	B
2.1-M14D10S12D06	10	12	6	28	65
2.1-M14D12S12D06	12	12	6	30	65
2.1-M14D10S16D08	10	16	8	34	70
2.1-M14D12S16D08	12	16	8	36	75

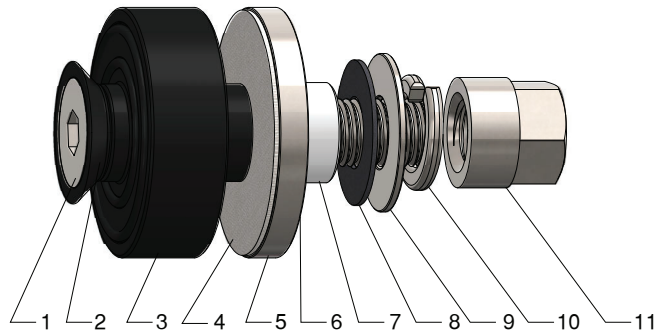
\* For GWSFMA or thicker structure connection, longer screw may be required.

\*\* Custom-made size is available upon request.



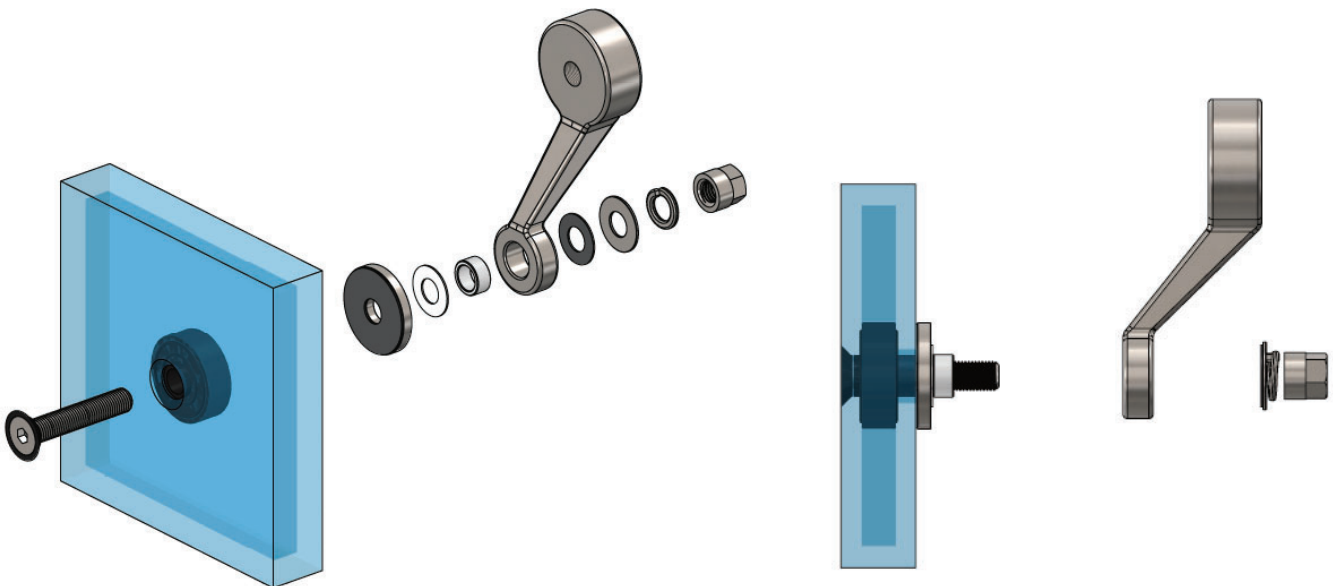
## EPCO POINT FIXED BOLT FIXING

### Component



Mark	Description	Material
1	Countersunk head hex socket screw	SUS316
2	Countersunk bushing $\varnothing 28.5 \times \varnothing 19.5$	POM(black)
3	Donut $\varnothing 50$ O.D.	POM(black)
4	Non-asbestos gasket $\varnothing 49 \times 1t$	Non-asbestos(white)
5	Locking washer $\varnothing 50 \times 6t$	SUS316
6	Silicone gasket $\varnothing 29 \times 1t$	Silicon (clear)
7	Bushing $\varnothing 20 \times 9.5L$	POM(black)
8	Non-asbestos gasket $\varnothing 29 \times 1t$	Non-asbestos(black)
9	Metal washer $\varnothing 31.6 \times 1.5t$	SUS304
10	Spring washer	SUS304
11	Cap nut	SUS316

### Installation Guideline



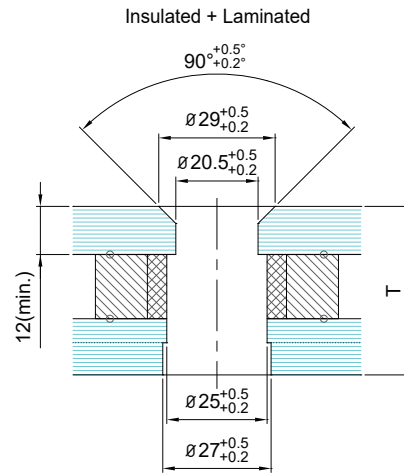
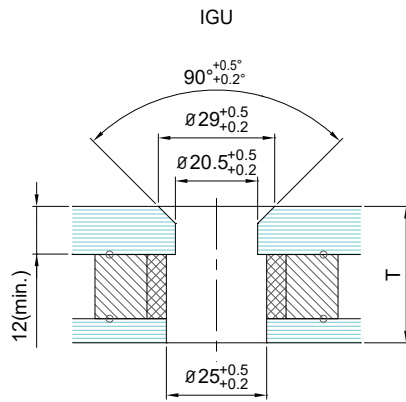
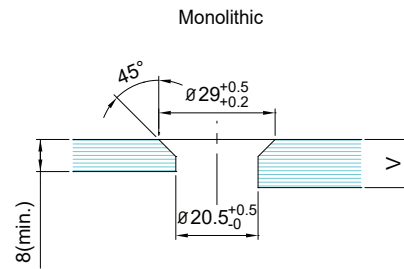
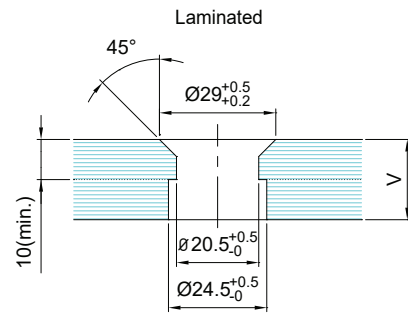
\*Loctite® is recommended on all screw threads during final assembly.

#### CLEAN AND MAINTENANCE WITH CARE:

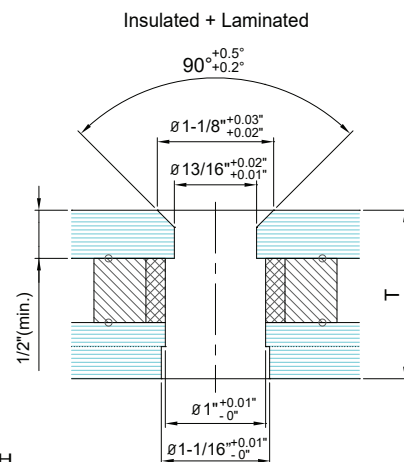
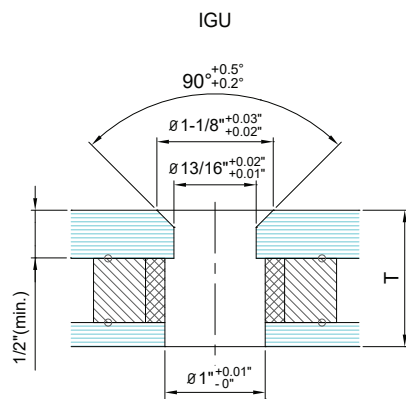
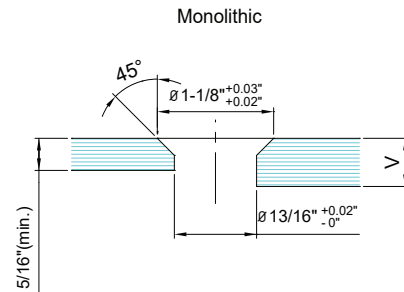
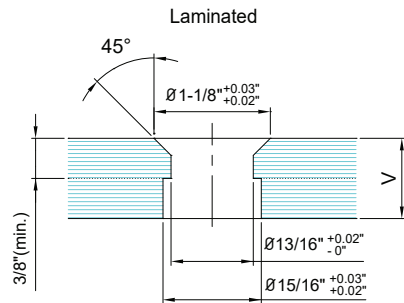
ALWAYS use a soft clean cloth, clean water and a mild soap or mild liquid detergent. Rinse with a separate clean cloth and clean water. NEVER leave such as render/cement on the surface nor use harsh, abrasive, powder based or alkaline type cleaners.

# EPCO POINT FIXED BOLT FIXING

## Glass Cutout



UNIT: MM



UNIT: INCH

## EPCO POINT FIXED BOLT FIXING

### 2.11 FIXED FLAT HEAD BOLT



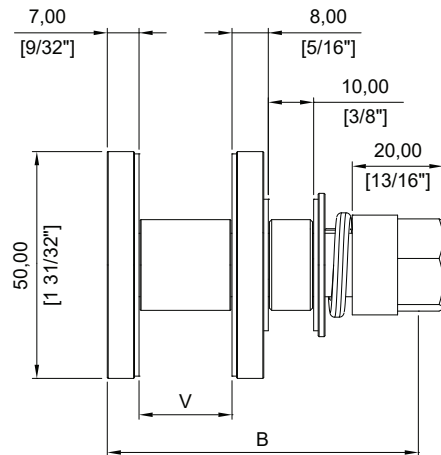
- Material: 316 Grade Stainless Steel
- Glass thickness: Up to 21mm (13/16")
- Glass use: Tempered, Monolithic or Laminated
- Glass hole: Required
- Finish: Stainless Polished, Stainless Satin, Dark Bronze and Matte Black

#### Finish Code

- SP : Stainless Polished
- SS : Stainless Satin
- DB : Dark Bronze
- MB : Matte Black

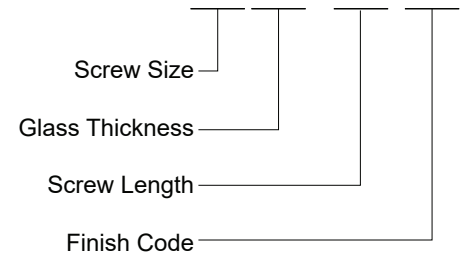
\* Other finish is available upon request

### Dimension



V = Glass Thick  
B = Screw Length

### 2.11-MXXXXBXX-XX



UNIT: MM

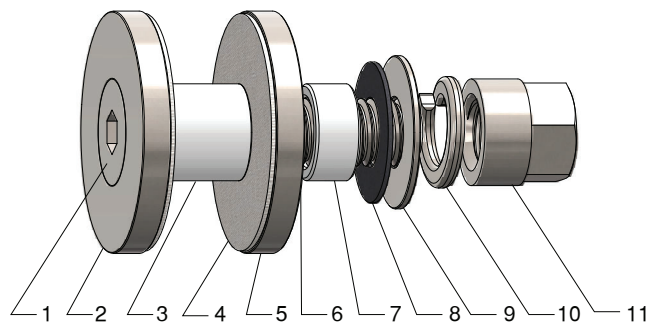
Code	Screw Size	V	B
2.11-M1010	M10	10	50
2.11-M1012	M10	12	50
2.11-M1215	M12	15	55
2.11-M1417	M14	17	60
2.11-M1419	M14	19	60
2.11-M1421	M14	21	65

\* For GWSFMA or thicker structure connection, longer screw may be required.

\*\* Custom-made size is available upon request.

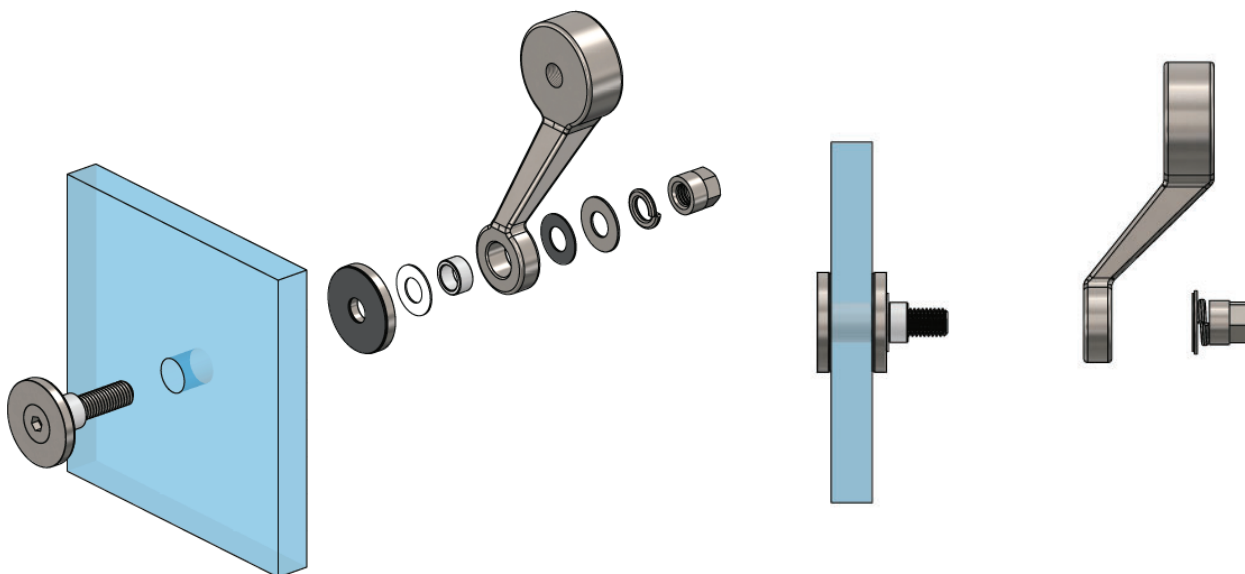
## EPCO POINT FIXED BOLT FIXING

### Component



Mark	Description	Material
1	Countersunk head hex socket screw	SUS316
2	Flat head locking washer $\varnothing 50 \times 6t$	SUS316
3	Bushing $\varnothing 20$ O.D.	POM(white)
4	Non-asbestos gasket $\varnothing 49 \times 1t$	Non-asbestos(white)
5	Locking washer $\varnothing 50 \times 6t$	SUS316
6	Silicone gasket $\varnothing 29 \times 1t$	Silicon (clear)
7	Bushing $\varnothing 20 \times 9.5L$	POM(black)
8	Non-asbestos gasket $\varnothing 29 \times 1t$	Non-asbestos(black)
9	Metal washer $\varnothing 31.6 \times 1.5t$	SUS304
10	Spring washer	SUS304
11	Cap nut	SUS316

### Installation Guideline



\*Loctite® is recommended on all screw threads during final assembly.

#### CLEAN AND MAINTENANCE WITH CARE:

ALWAYS use a soft clean cloth, clean water and a mild soap or mild liquid detergent. Rinse with a separate clean cloth and clean water. NEVER leave such as render/cement on the surface nor use harsh, abrasive, powder based or alkaline type cleaners.



# EPCO POINT FIXED BOLT FIXING

## 2.11 IG FIXED COUNTERSUNK BOLT



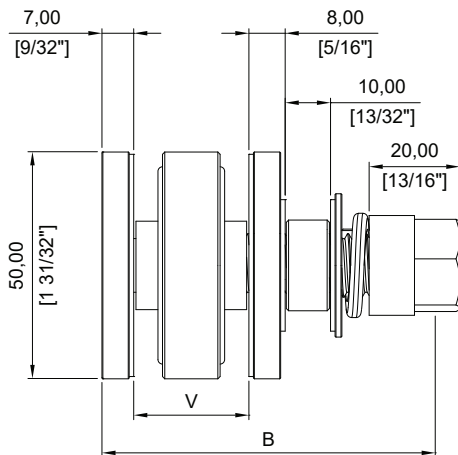
- Material: 316 Grade Stainless Steel
- Glass thickness: 24mm-38mm (15/16"-1 1/2")
- Glass use: Insulating Tempered Glass
- Glass hole: Required
- Finish: Stainless Polished, Stainless Satin, Dark Bronze and Matte Black

### Finish Code

- SP : Stainless Polished
- SS : Stainless Satin
- DB : Dark Bronze
- MB : Matte Black

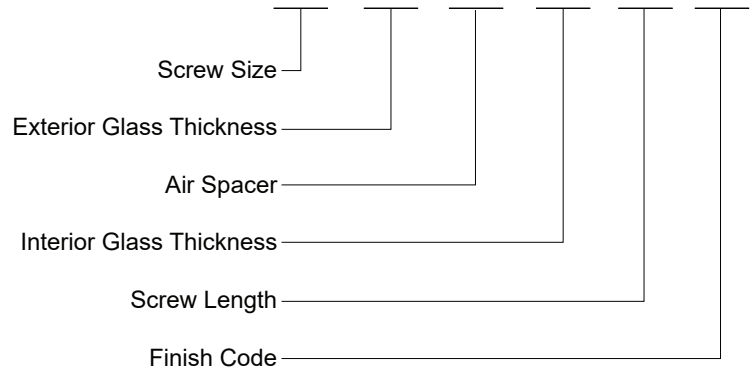
\* Other finish is available upon request

## Dimension



V = Glass Thickness = P1 + Air Spacer + P2  
P1 = Exterior Glass P2 = Interior Glass  
B = Screw Length

## 2.11-MXXDXXSXXDXXBXX-XX



UNIT: MM

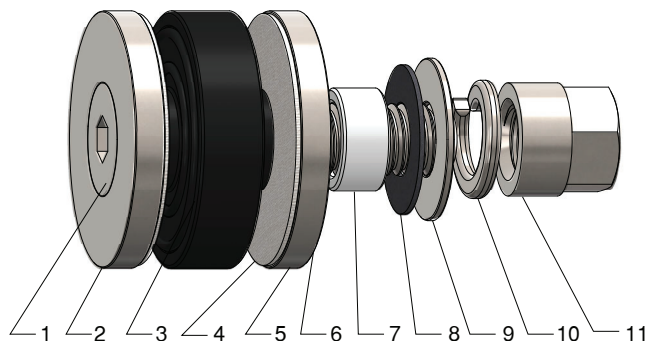
Code	P1	Air Spacer	P2	V	B
2.11-M14D06S12D06	6	12	6	24	70
2.11-M14D10S12D06	10	12	6	28	70
2.11-M14D10S12D10	10	12	10	32	75
2.11-M14D10S16D08	10	16	8	34	80
2.11-M14D12S16D08	12	16	8	36	80

\* For GWSFMA or thicker structure connection, longer screw may be required.

\*\* Custom-made size is available upon request.

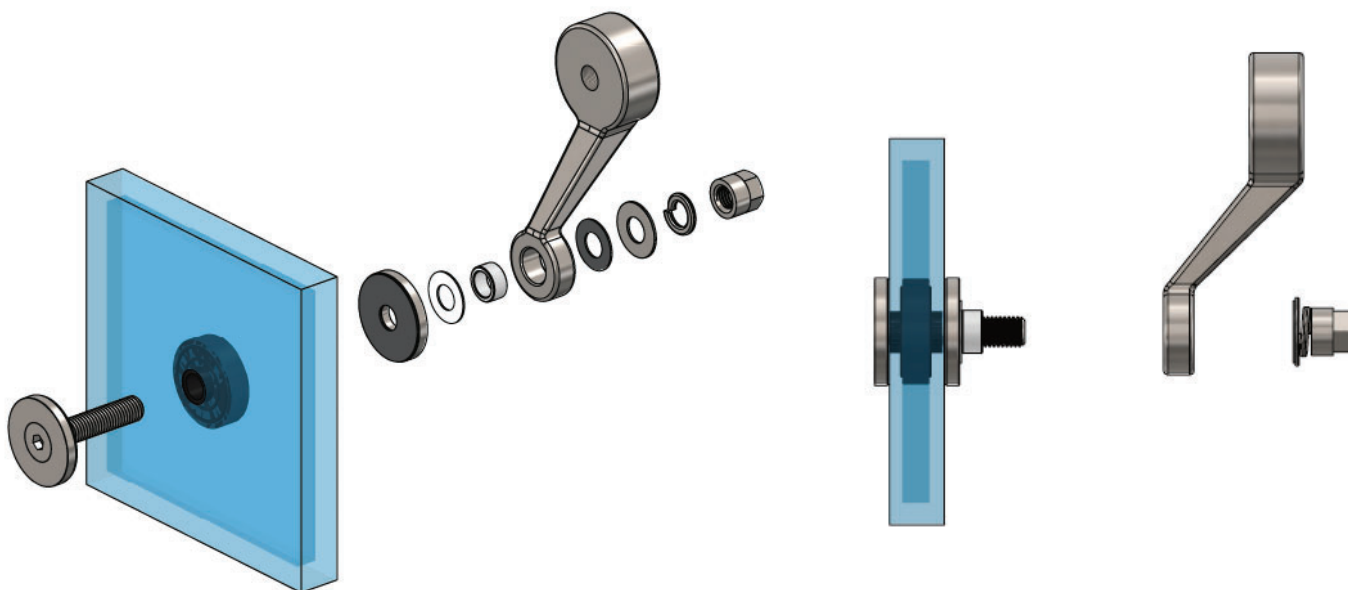
## EPCO POINT FIXED BOLT FIXING

### Component



Mark	Description	Material
1	Countersunk head hex socket screw	SUS316
2	Flat head locking washer $\varnothing 50 \times 6t$	SUS316
3	Donut $\varnothing 50$ O.D.	POM(black)
4	Non-asbestos gasket $\varnothing 49 \times 1t$	Non-asbestos(white)
5	Locking washer $\varnothing 50 \times 6t$	SUS316
6	Silicone gasket $\varnothing 29 \times 1t$	Silicon (clear)
7	Bushing $\varnothing 20 \times 9.5L$	POM(black)
8	Non-asbestos gasket $\varnothing 29 \times 1t$	Non-asbestos(black)
9	Metal washer $\varnothing 31.6 \times 1.5t$	SUS304
10	Spring washer	SUS304
11	Cap nut	SUS316

### Installation Guideline



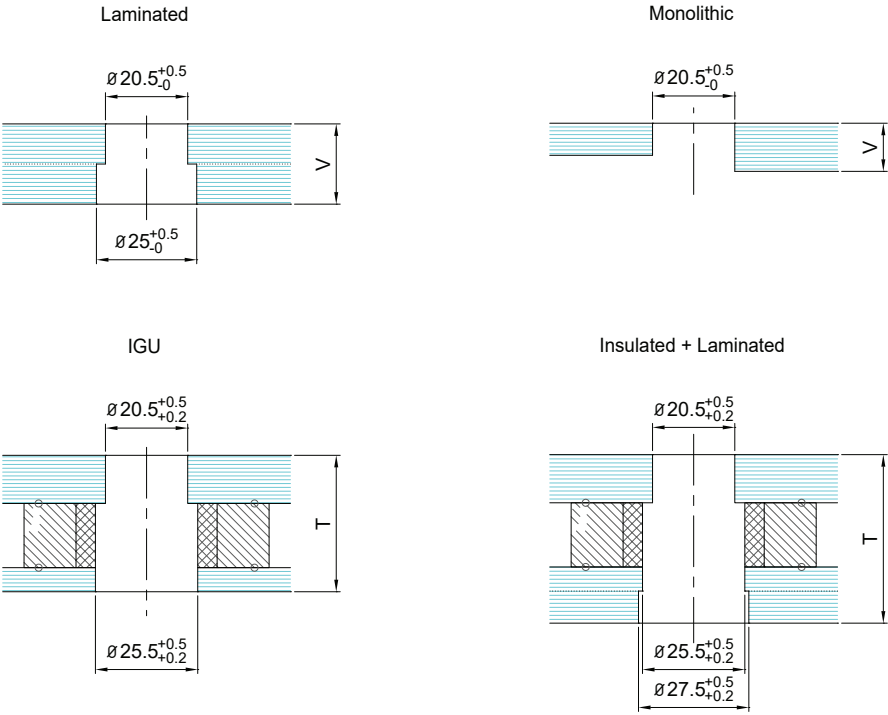
\*Loctite® is recommended on all screw threads during final assembly.

#### CLEAN AND MAINTENANCE WITH CARE:

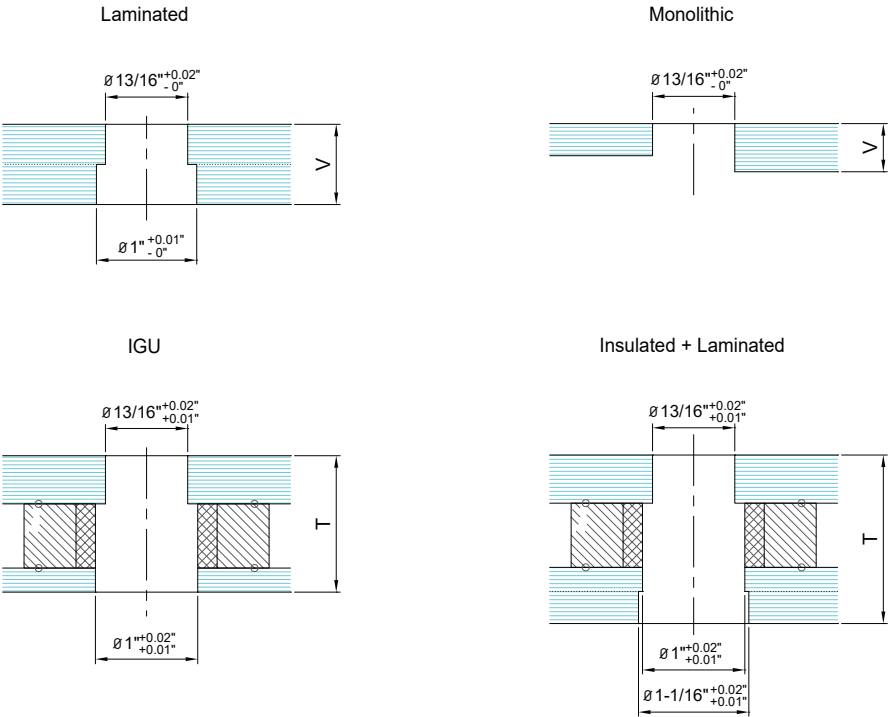
ALWAYS use a soft clean cloth, clean water and a mild soap or mild liquid detergent. Rinse with a separate clean cloth and clean water. NEVER leave such as render/cement on the surface nor use harsh, abrasive, powder based or alkaline type cleaners.

# EPCO POINT FIXED BOLT FIXING

## Glass Cutout



UNIT: MM



UNIT: INCH

# EPCO ARTICULATED BOLT FIXING

## 2.3 ARTICULATED COUNTERSUNK BOLT



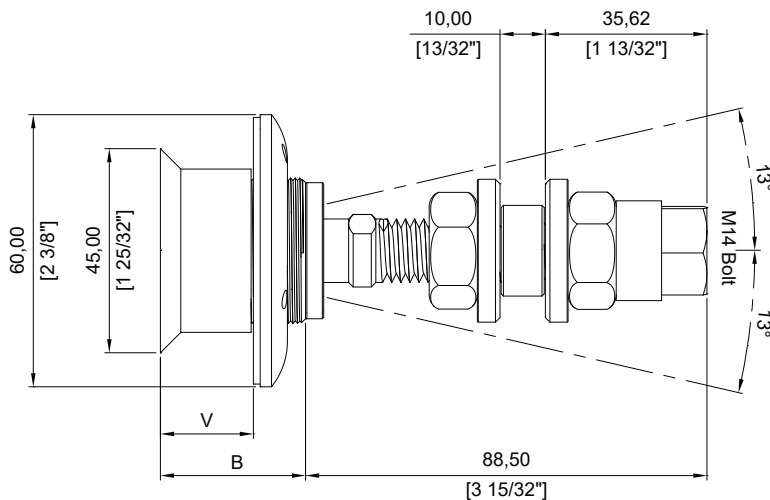
- Material: 316 Grade Stainless Steel
- Glass thickness: 10mm -27mm (3/8" - 1 1/16")
- Glass use: Tempered, Monolithic or Laminated
- Glass hole: Required
- Minimum glass thickness: Please refer to glass cutout sheet
- Finish: Stainless Polished, Stainless Satin, Dark Bronze and Matte Balck

### Finish Code

- SP : Stainless Polished
- SS : Stainless Satin
- DB : Dark Bronze
- MB : Matte Black

\* Other finish is available upon request

## Dimension



V = Glass Thick  
B = Body Length

## 2.3-MXX~~XX~~BXX-XX

Bolt Size  
Glass Thickness  
Body Length  
Finish Code

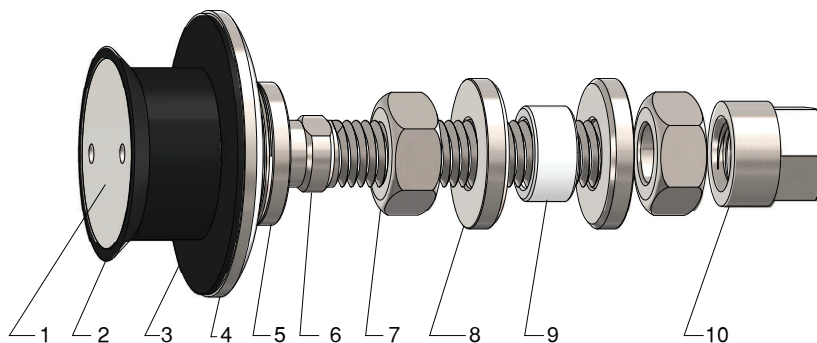
UNIT: MM

Code	Bolt Size	V	B	Swivel Range(°)
2.3-M1210	M12	10	28	40
2.3-M1212	M12	12	28	40
2.3-M1215	M12	15	28	40
2.3-M1217	M12	17	28	40
2.3-M1419	M14	19	32	26
2.3-M1421	M14	21	36	26
2.3-M1425	M14	25	40	26
2.3-M1427	M14	27	40	26

\* Custom-made size is available upon request.

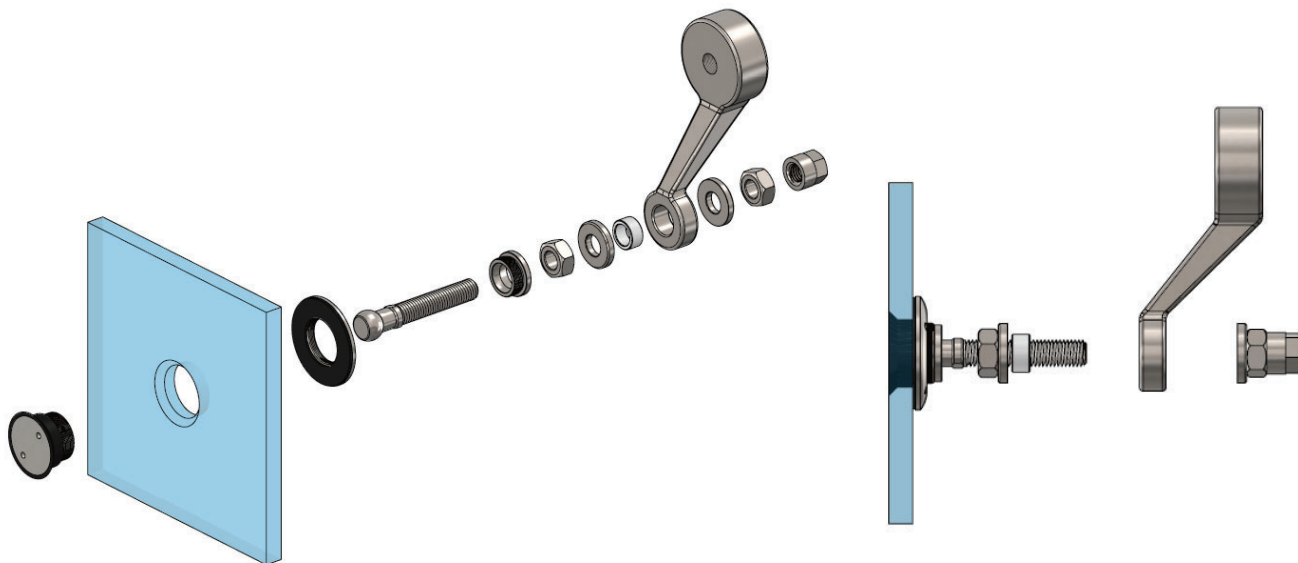
## EPCO ARTICULATED BOLT FIXING

### Component



Mark	Description	Material
1	Countersunk body $\varnothing 40 \times \varnothing 32$	SUS316
2	Countersunk bushing $\varnothing 45 \times \varnothing 35$	POM(black)
3	Backlit gasket $\varnothing 58.8 \times 1.5t$	Backlit(black)
4	Locking washer $\varnothing 60 \times 6t$	SUS316
5	Locking nut	SUS316
6	Swivel bolt 95L	SUS316
7	Hex nut	SUS304
8	Metal Washer $\varnothing 31.5 \times 5t$	SUS316
9	Bushing $\varnothing 20 \times 9.5L$	POM(white)
10	Cap nut	SUS316

### Installation Guideline



\*Loctite® is recommended on all screw threads during final assembly.

#### CLEAN AND MAINTENANCE WITH CARE:

ALWAYS use a soft clean cloth, clean water and a mild soap or mild liquid detergent. Rinse with a separate clean cloth and clean water. NEVER leave such as render/cement on the surface nor use harsh, abrasive, powder based or alkaline type cleaners.



# EPCO ARTICULATED BOLT FIXING

## 2.3 IG ARTICULATED COUNTERSUNK BOLT



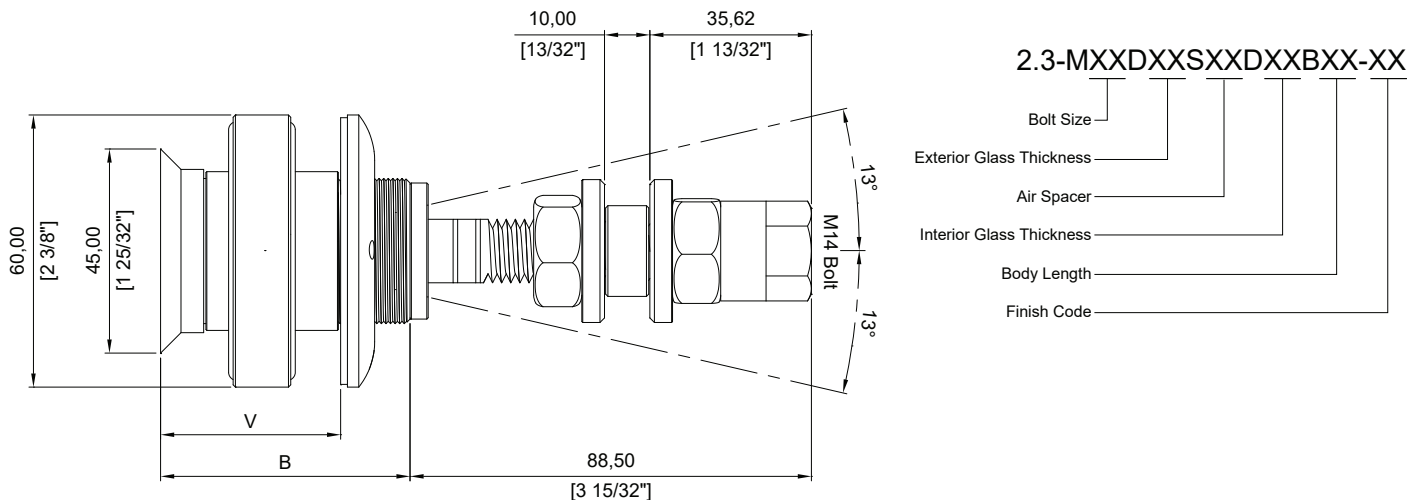
- Material: 316 Grade Stainless Steel
- Glass thickness: 30mm-43mm (1 3/16" - 1 11/16")
- Glass use: Insulating Tempered Glass
- Glass hole: Required
- Minimum glass thickness: Please refer to glass cutout sheet
- Finish: Stainless Polished, Stainless Satin, Dark Bronze and Matte Black

### Finish Code

- SP : Stainless Polished
- SS : Stainless Satin
- DB : Dark Bronze
- MB : Matte Black

\* Other finish is available upon request

## Dimension



V = Glass Thickness = P1 + Air Spacer + P2  
P1 = Exterior Glass P2 = Interior Glass  
B = Body Length

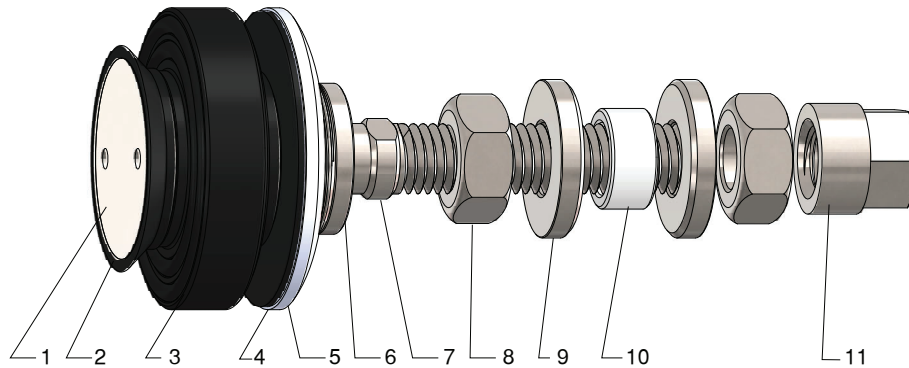
UNIT: MM

Code	P1	Air Spacer	P2	V	B	Swivel Range(°)
2.3-M14D12S12D06	12	12	6	30	45	26
2.3-M14D12S12D14	12	12	14	38	50	26
2.3-M14D17.5S12D11.5	17.5	12	11.5	41	55	26

\* Custom-made size is available upon request.

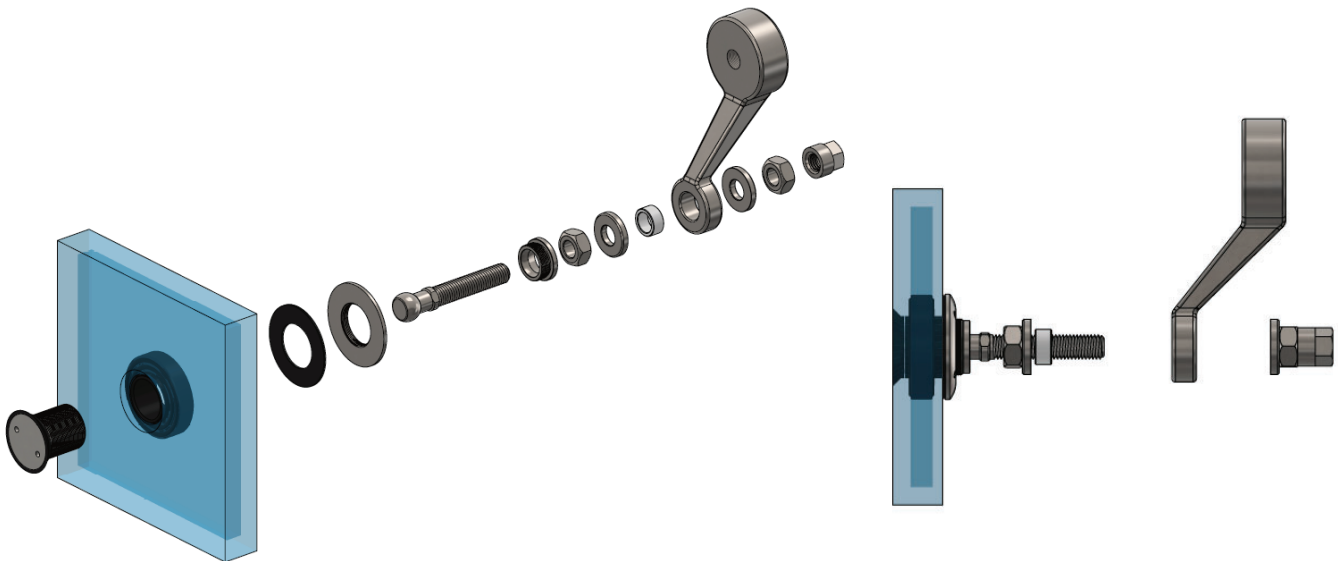
# EPCO ARTICULATED BOLT FIXING

## Component



Mark	Description	Material
1	Countersunk body $\varnothing 40 \times 32$	SUS316
2	Countersunk bushing $\varnothing 45 \times \varnothing 35$	POM(black)
3	Donut $\varnothing 60$ O.D.	POM(black)
4	Backlit gasket $\varnothing 58.8 \times 1.5t$	Backlit(black)
5	Locking washer $\varnothing 60 \times 6t$	SUS316
6	Locking nut	SUS316
7	Swivel bolt 95L	SUS316
8	Hex nut	SUS304
9	Metal Washer $\varnothing 31.5 \times 5t$	SUS316
10	Bushing $\varnothing 20 \times 9.5L$	POM(white)
11	Cap nut	SUS316

## Installation Guideline



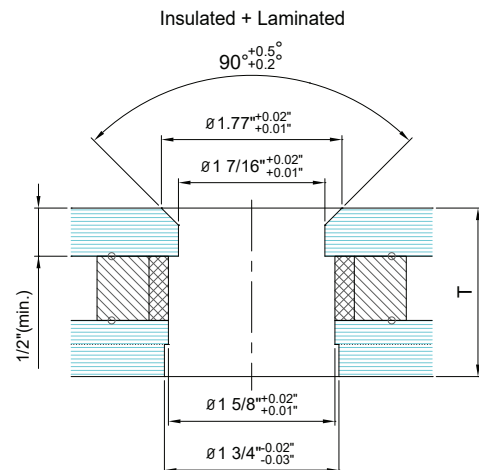
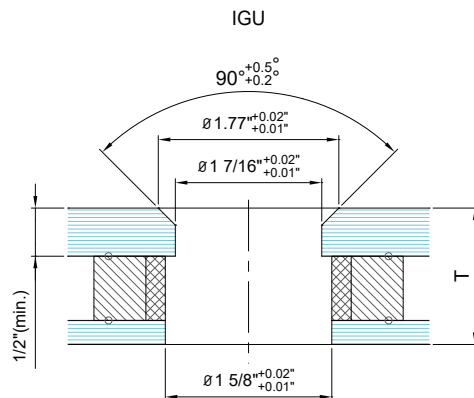
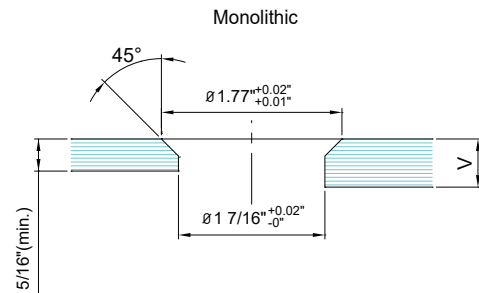
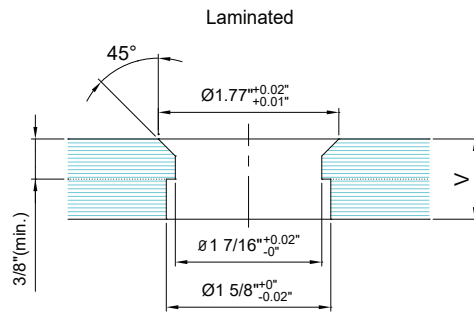
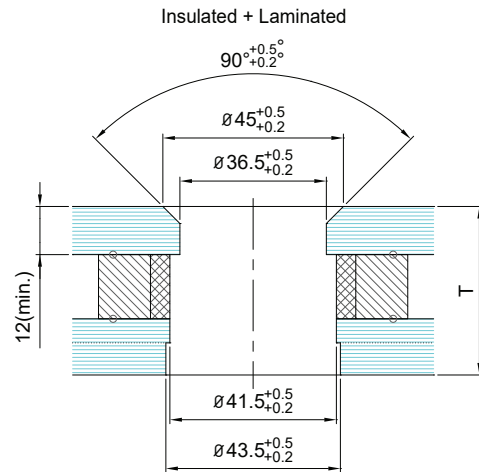
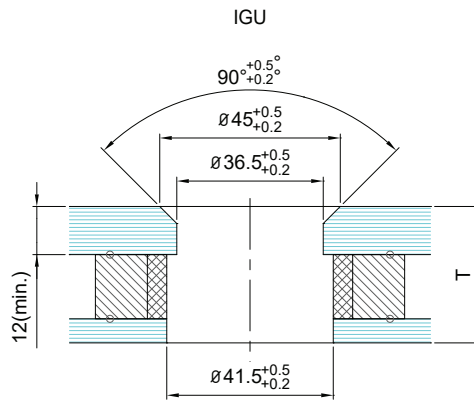
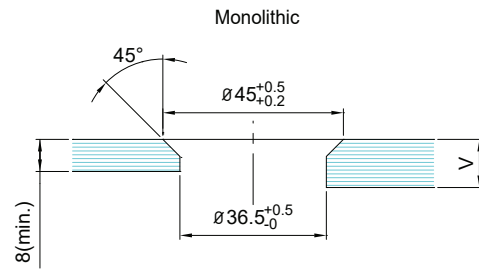
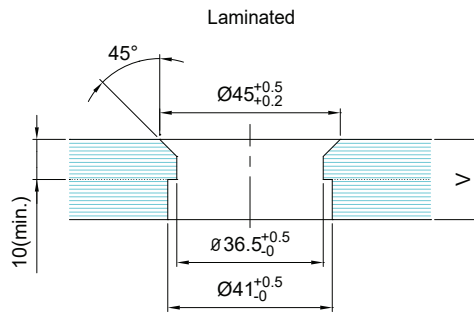
\*Loctite® is recommended on all screw threads during final assembly.

### CLEAN AND MAINTENANCE WITH CARE:

ALWAYS use a soft clean cloth, clean water and a mild soap or mild liquid detergent. Rinse with a separate clean cloth and clean water. NEVER leave such as render/cement on the surface nor use harsh, abrasive, powder based or alkaline type cleaners.

# EPCO ARTICULATED BOLT FIXING

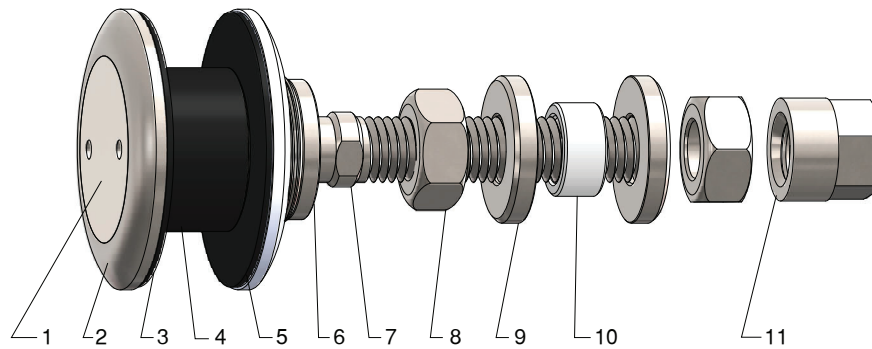
## Glass Cutout





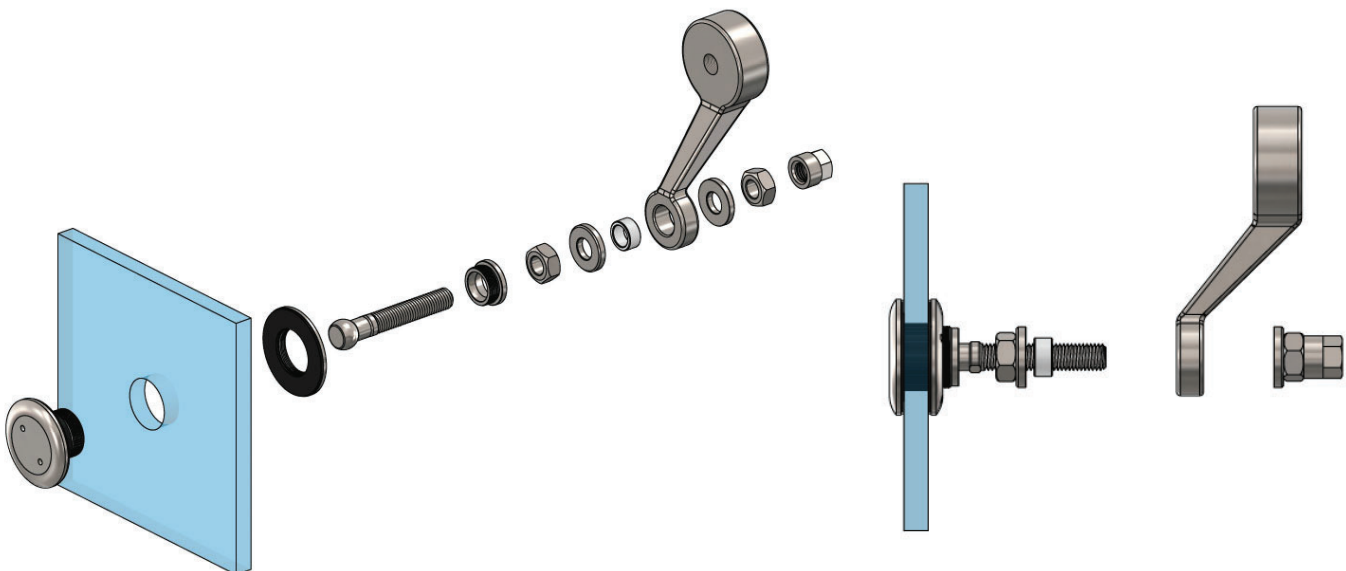
# EPCO ARTICULATED BOLT FIXING

## Component



Mark	Description	Material
1	Countersunk body $\varnothing 40 \times \varnothing 32$	SUS316
2	Outside disc $\varnothing 60 \times 6t$	SUS316
3	Backlit gasket $\varnothing 58.8 \times 1.5t$	Backlit(black)
4	Bushing $\varnothing 35$ O.D.	POM(black)
5	Locking washer $\varnothing 60 \times 6t$	SUS316
6	Locking nut	SUS316
7	Swivel bolt 95L	SUS316
8	Hex nut	SUS304
9	Metal washer $\varnothing 31.5 \times 5t$	SUS316
10	Bushing $\varnothing 20 \times 9.5L$	POM(white)
11	Cap nut	SUS316

## Installation Guideline



\*Loctite® is recommended on all screw threads during final assembly.

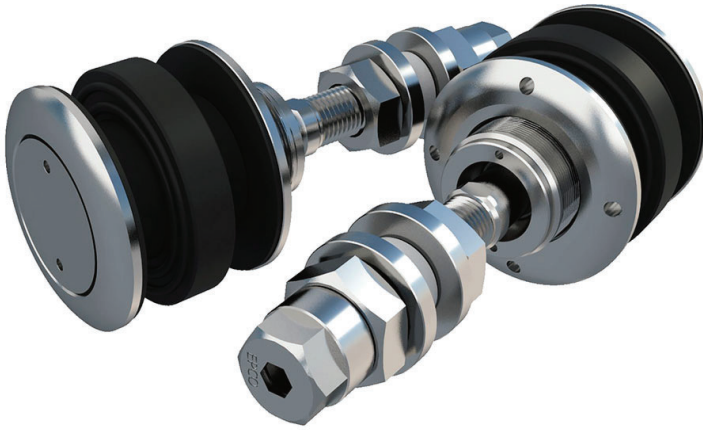
### CLEAN AND MAINTENANCE WITH CARE:

ALWAYS use a soft clean cloth, clean water and a mild soap or mild liquid detergent. Rinse with a separate clean cloth and clean water. NEVER leave such as render/cement on the surface nor use harsh, abrasive, powder based or alkaline type cleaners.



# EPCO ARTICULATED BOLT FIXING

## 2.3D IG ARTICULATED FLAT HEAD BOLT



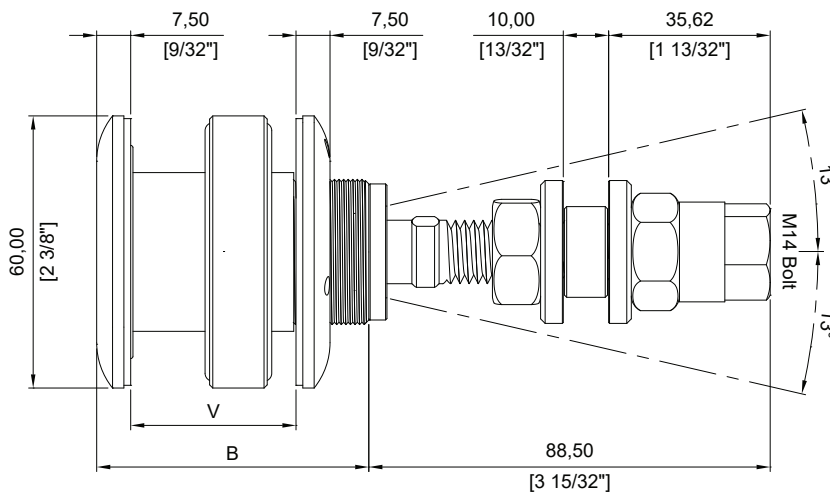
- Material: 316 Grade Stainless Steel
- Glass thickness: 25mm-43mm(1" - 1 11/16")
- Glass use: Insulating Tempered Glass
- Glass hole: Required
- Finish: Stainless Polished, Stainless Satin, Dark Bronze and Matte Black

### Finish Code

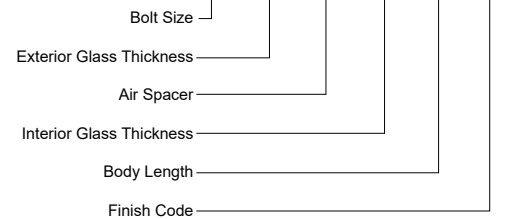
- SP : Stainless Polished
- SS : Stainless Satin
- DB : Dark Bronze
- MB : Matte Black

\* Other finish is available upon request

## Dimension



2.3D-MXXDXXSXXDXXBXX-XX



UNIT: MM

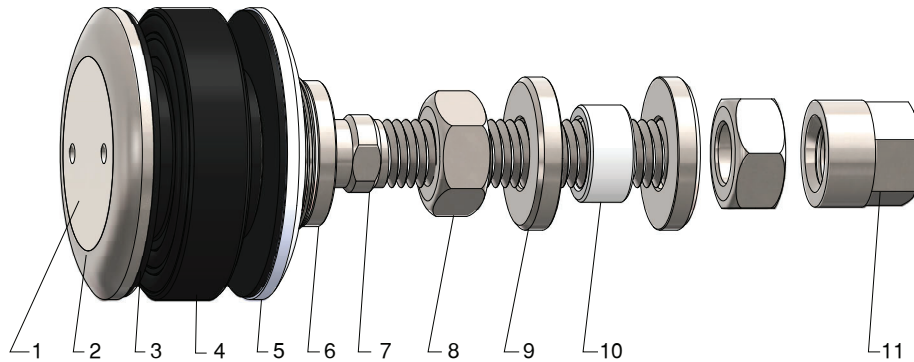
V = Glass Thickness = P1 + Air Spacer + P2  
P1 = Exterior Glass P2 = Interior Glass  
B = Body Length

Code	P1	Air Spacer	P2	V	B	Swivel Range(°)
2.3D-M14D6.35S12.7D6.35	6.35	12.7	6.35	25	45	26
2.3D-M14D12.7S12.7D6.35	12.7	12.7	6.35	32	55	26
2.3D-M14D14.22S12.7D12.7	14.22	12.7	12.7	40	60	26
2.3D-M14D17.4S12.7D12.7	17.4	12.7	12.7	43	65	26

\* Custom-made size is available upon request.

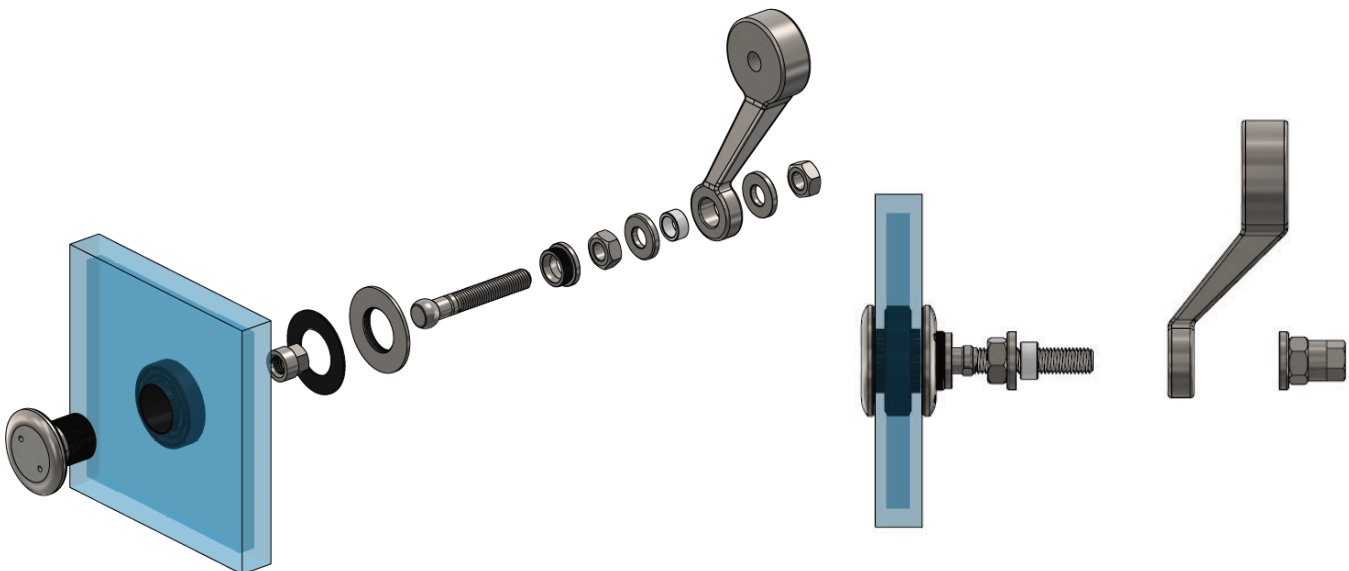
# EPCO ARTICULATED BOLT FIXING

## Component



Mark	Description	Material
1	Countersunk body $\varnothing 40 \times \varnothing 32$	SUS316
2	Outside disc $\varnothing 60 \times 6t$	SUS316
3	Backlit gasket $\varnothing 58.8 \times 1.5t$	Backlit(black)
4	Donut $\varnothing 60$ O.D.	POM(black)
5	Locking washer $\varnothing 60 \times 6t$	SUS316
6	Locking nut	SUS316
7	Swivel bolt 95L	SUS316
8	Hex nut	SUS304
9	Metal Washer $\varnothing 31.5 \times 5t$	SUS316
10	Bushing $\varnothing 20 \times 9.5L$	POM(white)
11	Cap nut	SUS316

## Installation Guideline



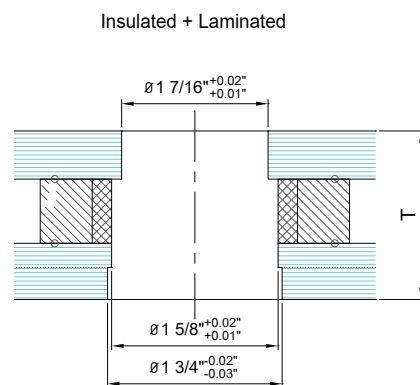
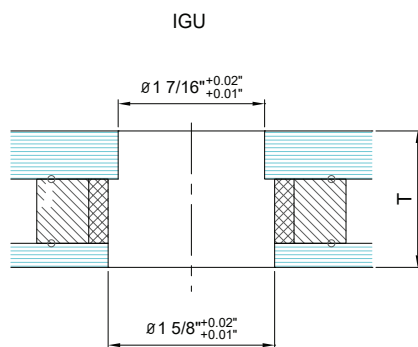
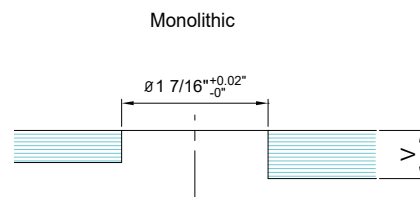
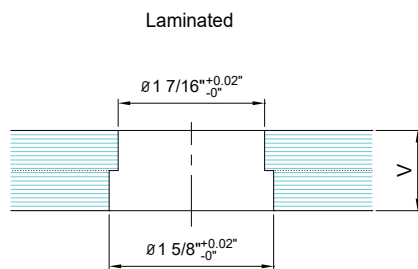
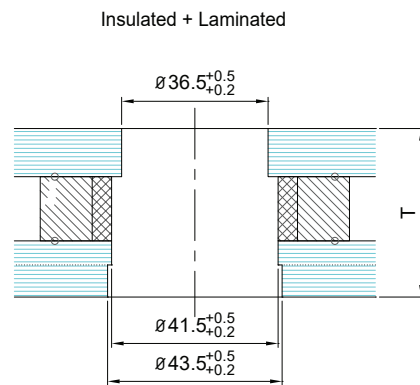
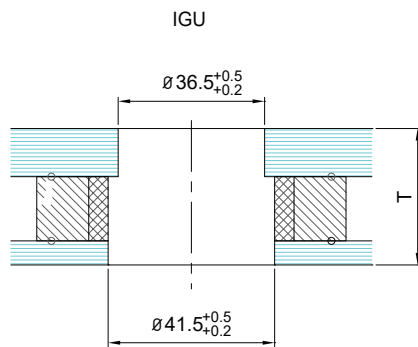
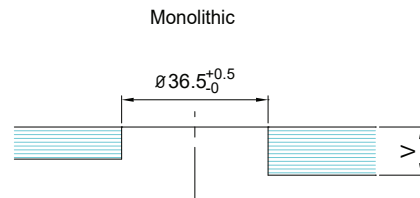
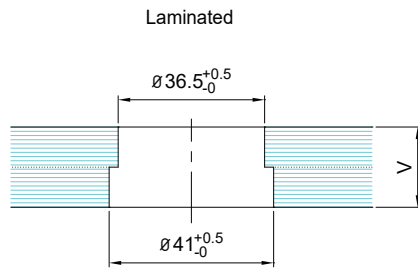
\*Loctite® is recommended on all screw threads during final assembly.

### CLEAN AND MAINTENANCE WITH CARE:

ALWAYS use a soft clean cloth, clean water and a mild soap or mild liquid detergent. Rinse with a separate clean cloth and clean water. NEVER leave such as render/cement on the surface nor use harsh, abrasive, powder based or alkaline type cleaners.

# EPCO ARTICULATED BOLT FIXING

## Glass Cutout



# EPCO ARTICULATED BOLT FIXING

## 2.3D-EX ARTICULATED FLAT HEAD BOLT (Anti-loosening Design)



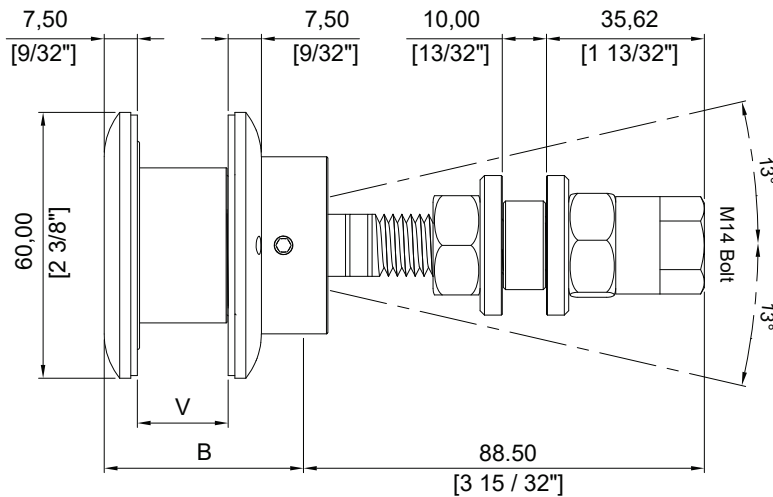
- Material: 316 Grade Stainless Steel
- Glass thickness: 14mm -27mm (9/16" - 1 1/16")
- Glass use: Tempered Monolithic or Laminated
- Glass hole: Required
- Finish: Stainless Polished, Stainless Satin, Dark Bronze and Matte Black

### Finish Code

- SP : Stainless Polished
- SS : Stainless Satin
- DB : Dark Bronze
- MB : Matte Black

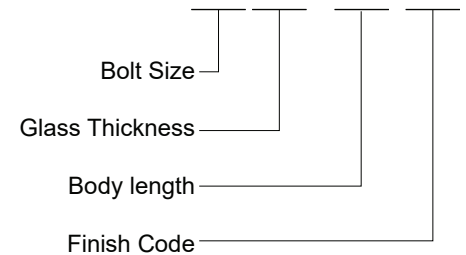
\* Other finish is available upon request

## Dimension



V = Glass Thick  
B = Body Length

## 2.3D-EX-MXX~~XX~~BXX-XX



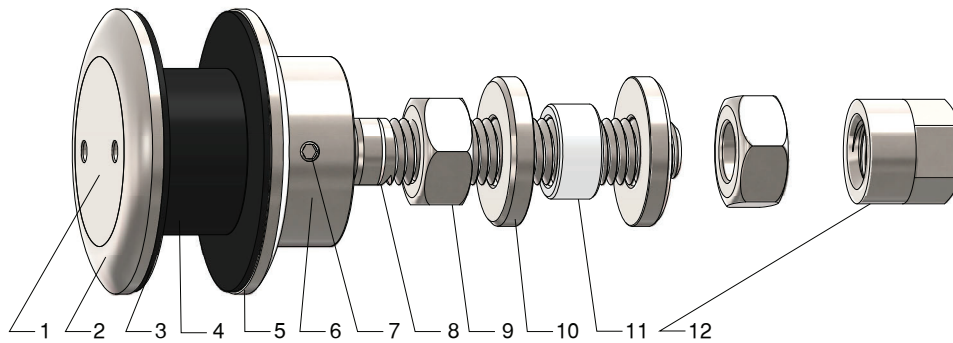
UNIT: MM

Code	Bolt Size	V	B	Swivel Range
2.3D-M1420	M14	20	45	26
2.3D-M1428	M14	28	50	26

\* Custom-made size is available upon request.

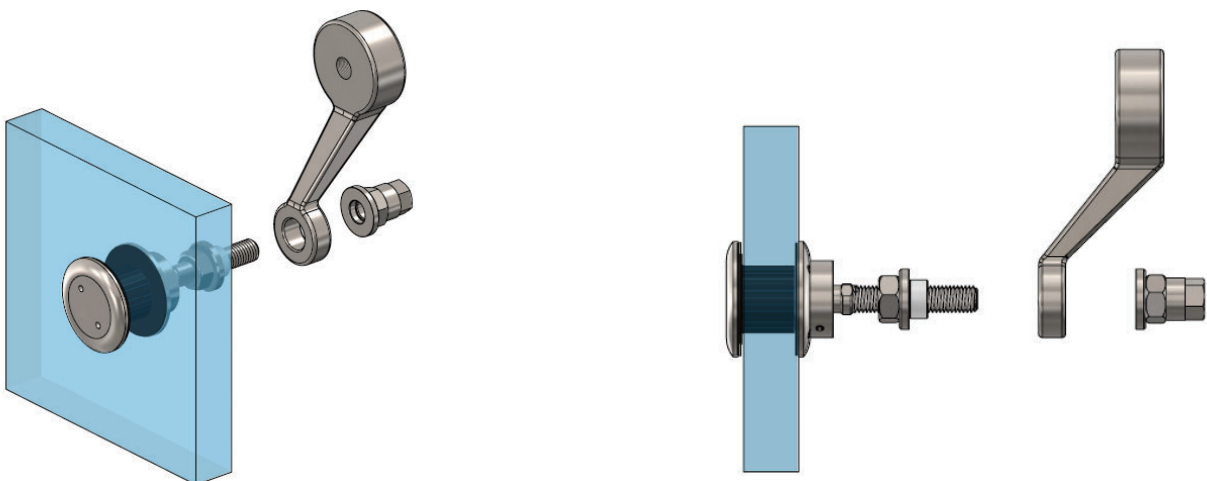
# EPCO ARTICULATED BOLT FIXING

## Component



Mark	Description	Material
1	Countersunk body $\varnothing 40 \times \varnothing 32$	SUS316
2	Outside disc $\varnothing 60 \times 6t$	SUS316
3	Backlit gasket $\varnothing 58.8 \times 1.5t$	Backlit(black)
4	Bushing $\varnothing 35$ O.D.	POM(black)
5	Locking washer $\varnothing 60 \times 6t$	SUS316
6	2nd Layer Locking nut	SUS316
7	Set Screw	SUS304
8	Swivel bolt 95L	SUS316
9	Hex nut	SUS304
10	Metal washer $\varnothing 31.5 \times 5t$	SUS316
11	Bushing $\varnothing 20 \times 9.5L$	POM(white)
12	Cap nut	SUS316

## Installation Guideline



\*Loctite® is recommended on all screw threads during final assembly.

### CLEAN AND MAINTENANCE WITH CARE:

ALWAYS use a soft clean cloth, clean water and a mild soap or mild liquid detergent. Rinse with a separate clean cloth and clean water. NEVER leave such as render/cement on the surface nor use harsh, abrasive, powder based or alkaline type cleaners.



# EPCO ARTICULATED BOLT FIXING

## 2.6 ARTICULATED FLAT HEAD BOLT



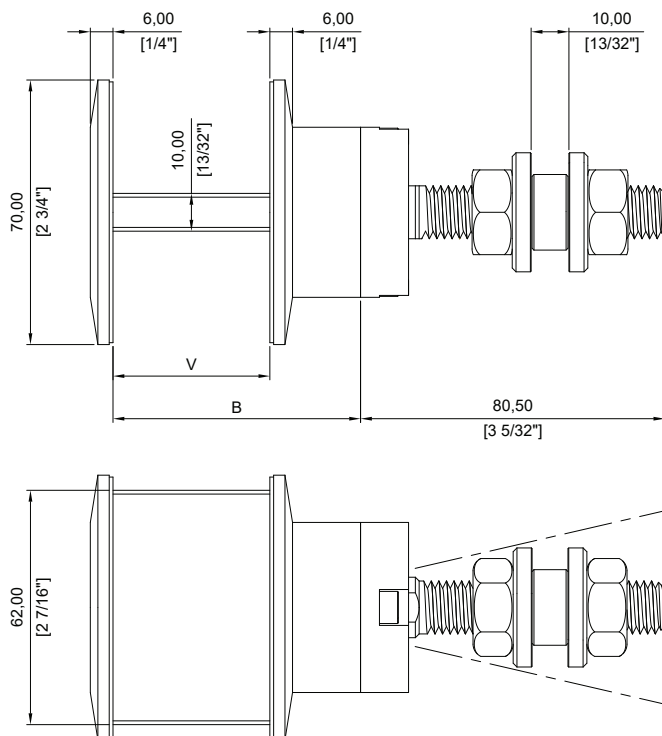
- Material: 316 Grade Stainless Steel
- Glass thickness: 25mm -38mm (1" - 1 1/2")
- Glass use: Tempered Insulating Glass
- Glass hole: Not required
- Finish: Stainless Polished, Stainless Satin, Dark Bronze and Matte Black

### Finish Code

- SP : Stainless Polished
- SS : Stainless Satin
- DB : Dark Bronze
- MB : Matte Black

\* Other finish is available upon request

## Dimension



2.6-MXXXBXX-XX

Bolt Size  
Glass Thickness  
Body Length  
Finish Code

UNIT: MM

Code	Bolt Size	V	B	Swivel Range(°)
2.6-M1425	M14	25	49	26
2.6-M1430	M14	30	54	26
2.6-M1435	M14	35	59	26

\* Custom-made size is available upon request.

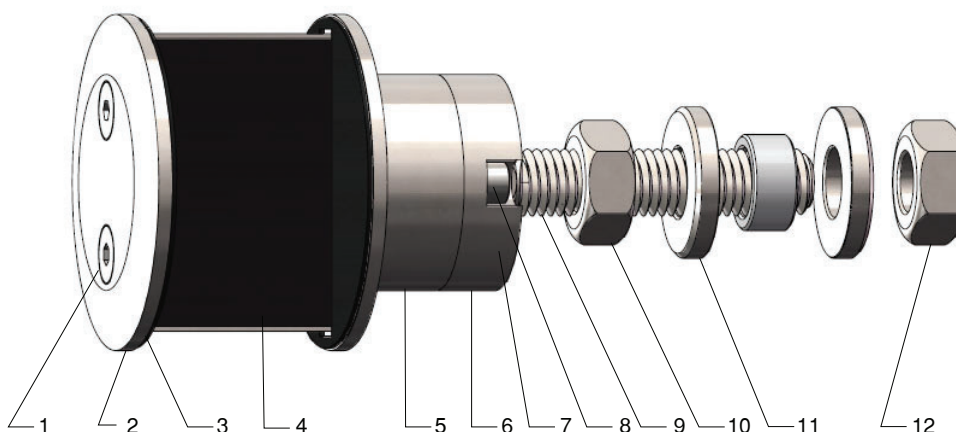
The swivel range of 2.6 is limited to horizontal direction

V = Glass Thick

B = Body Length

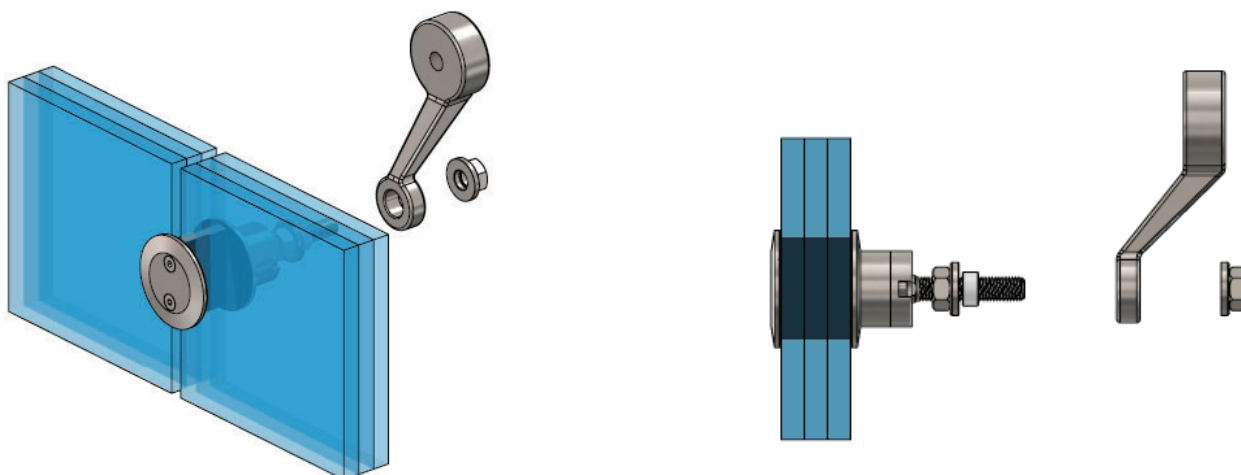
# EPCO ARTICULATED BOLT FIXING

## Component



Mark	Description	Material
1	Countersunk screw	SUS304
2	Locking washer $\varnothing 70 \times 6t$	SUS316
3	Gasket $\varnothing 69 \times 1t$	EPDM(black)
4	Gasket 5t	EPDM(black)
5	Body $\varnothing 70$	SUS316
6	Locking nut	SUS316
7	Locking cap	SUS316
8	Flat head screw	SUS304
9	Swivel bolt 95L	SUS316
10	Hex nut	SUS304
11	Metal Washer $\varnothing 31.5 \times 5t$	SUS316
12	Bushing $\varnothing 20 \times 9.5L$	POM(white)

## Installation Guidline



\*Loctite® is recommended on all screw threads during final assembly.

### CLEAN AND MAINTENANCE WITH CARE:

ALWAYS use a soft clean cloth, clean water and a mild soap or mild liquid detergent. Rinse with a separate clean cloth and clean water. NEVER leave such as render/cement on the surface nor use harsh, abrasive, powder based or alkaline type cleaners.