

## VOLUME 6 - GWSFA SYSTEM

# EPCO POINT SUPPORTED SYSTEM

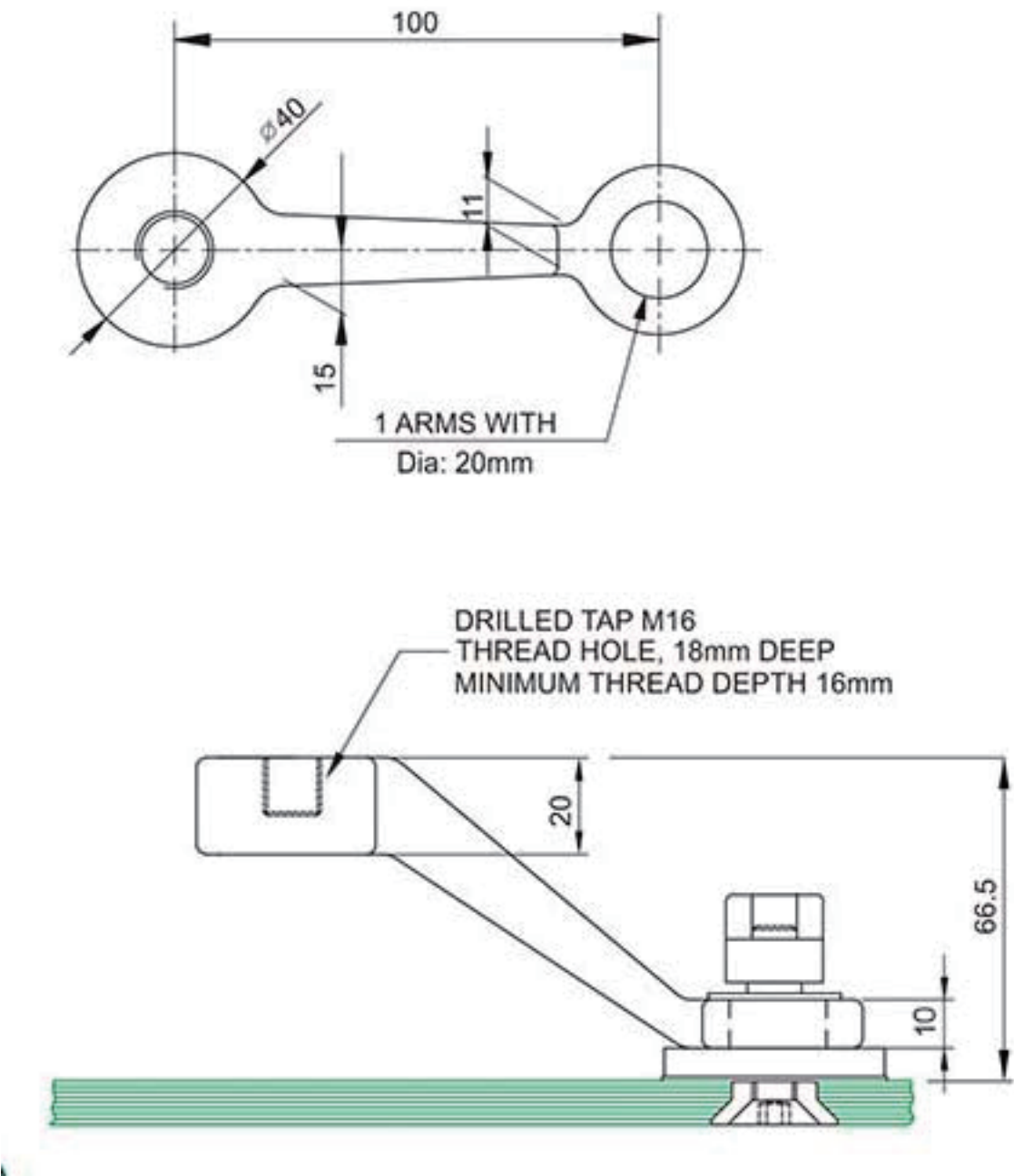


# 1 Way Glass Connection



GWSFA - 1

## Product Dimensions



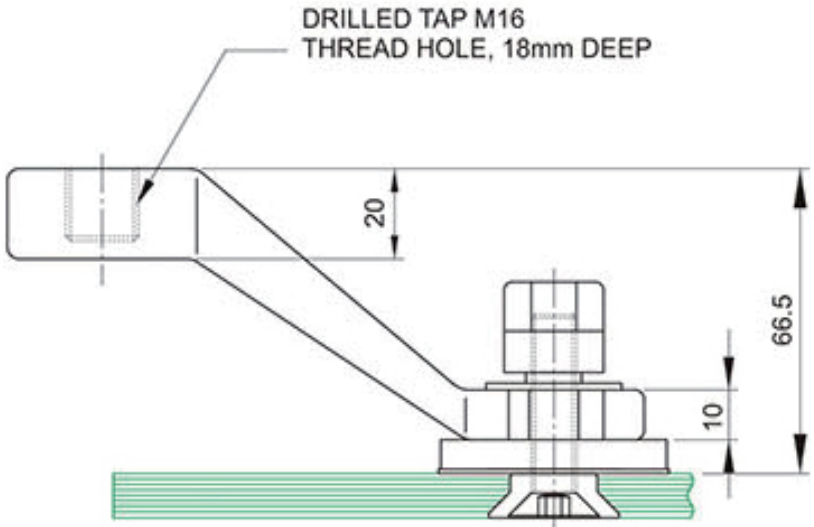
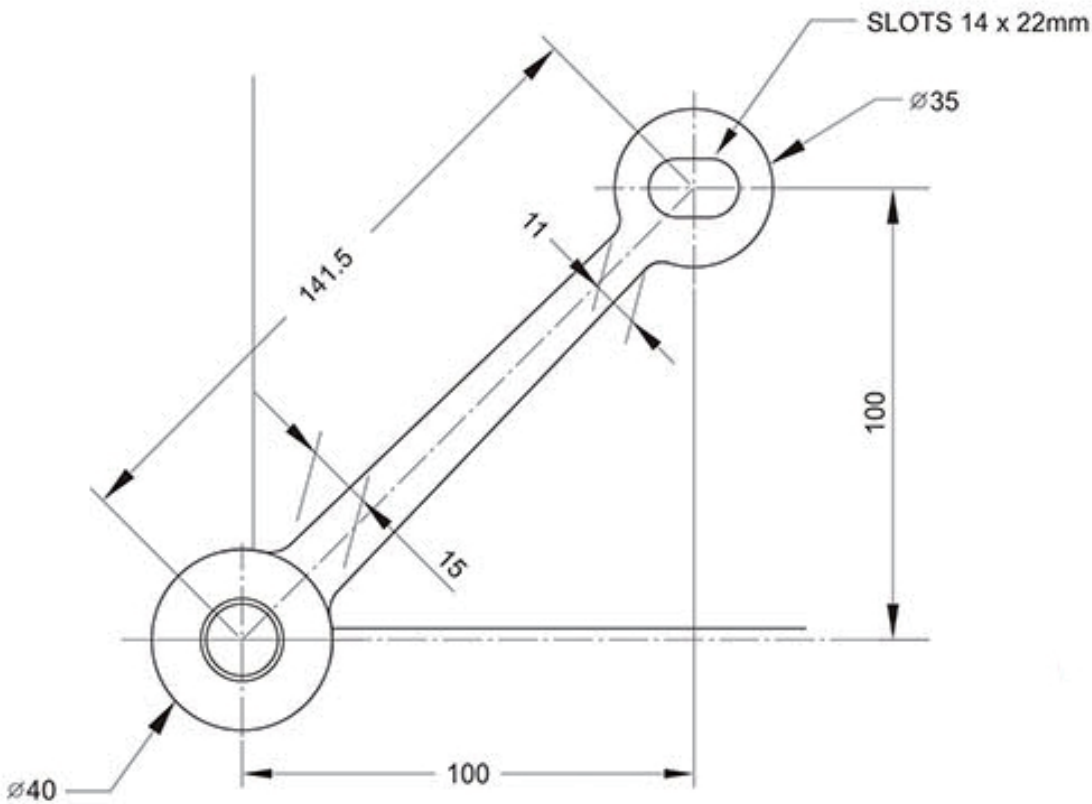


# 1 Way Glass Connection



GWSFA – 2/1

## Product Dimensions

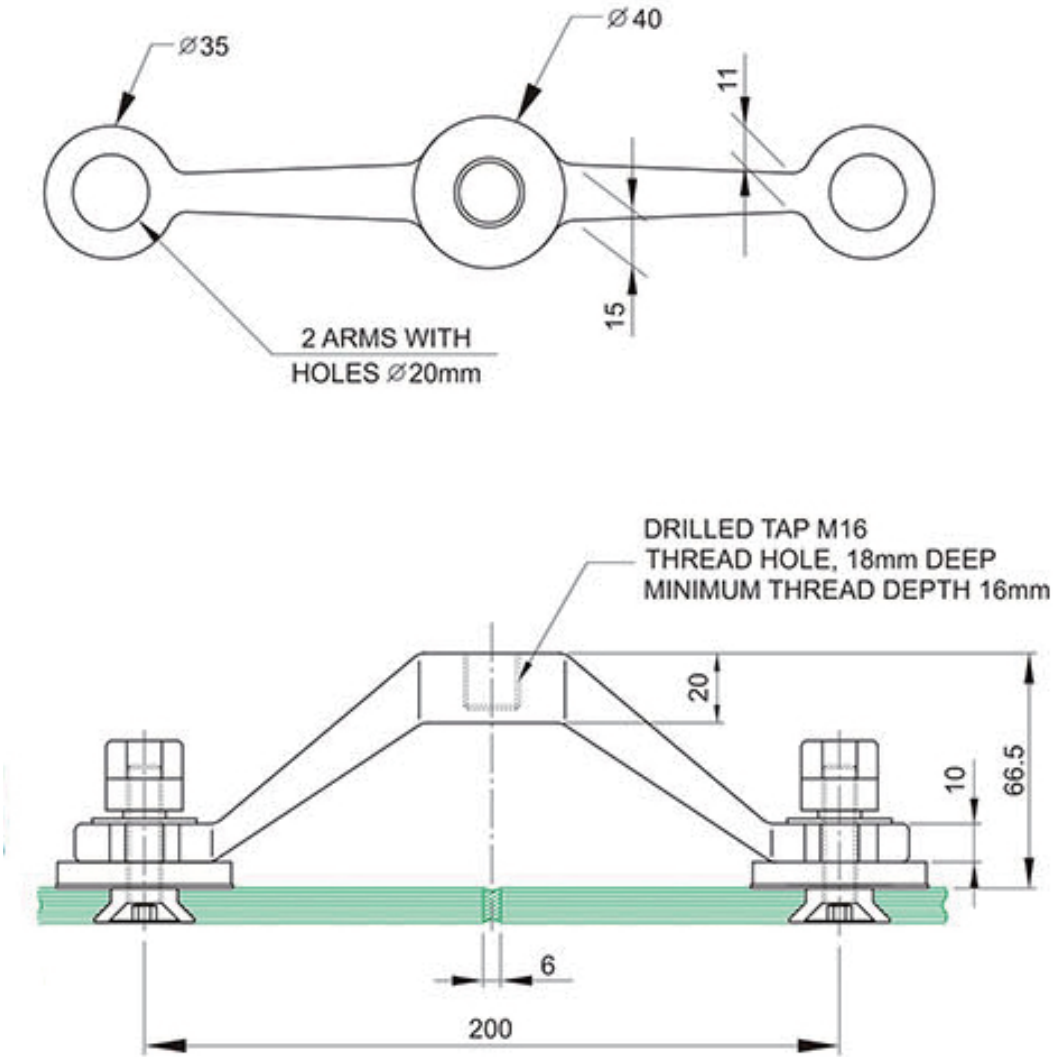


# 2 Way Glass Connection



GWSFA – 2

## Product Dimensions



1

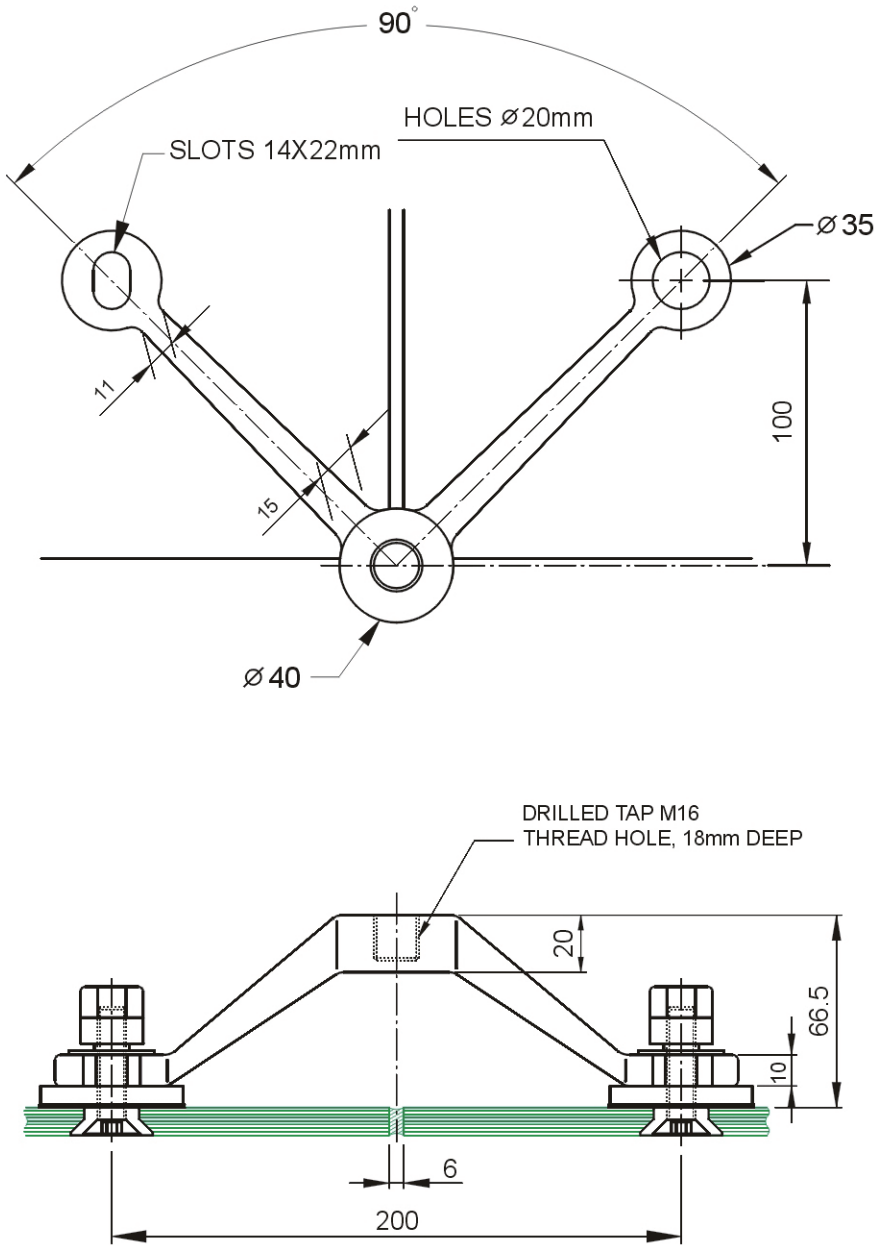


# 2 Way Glass Connection



GWSFA – 4/2/90

## Product Dimensions

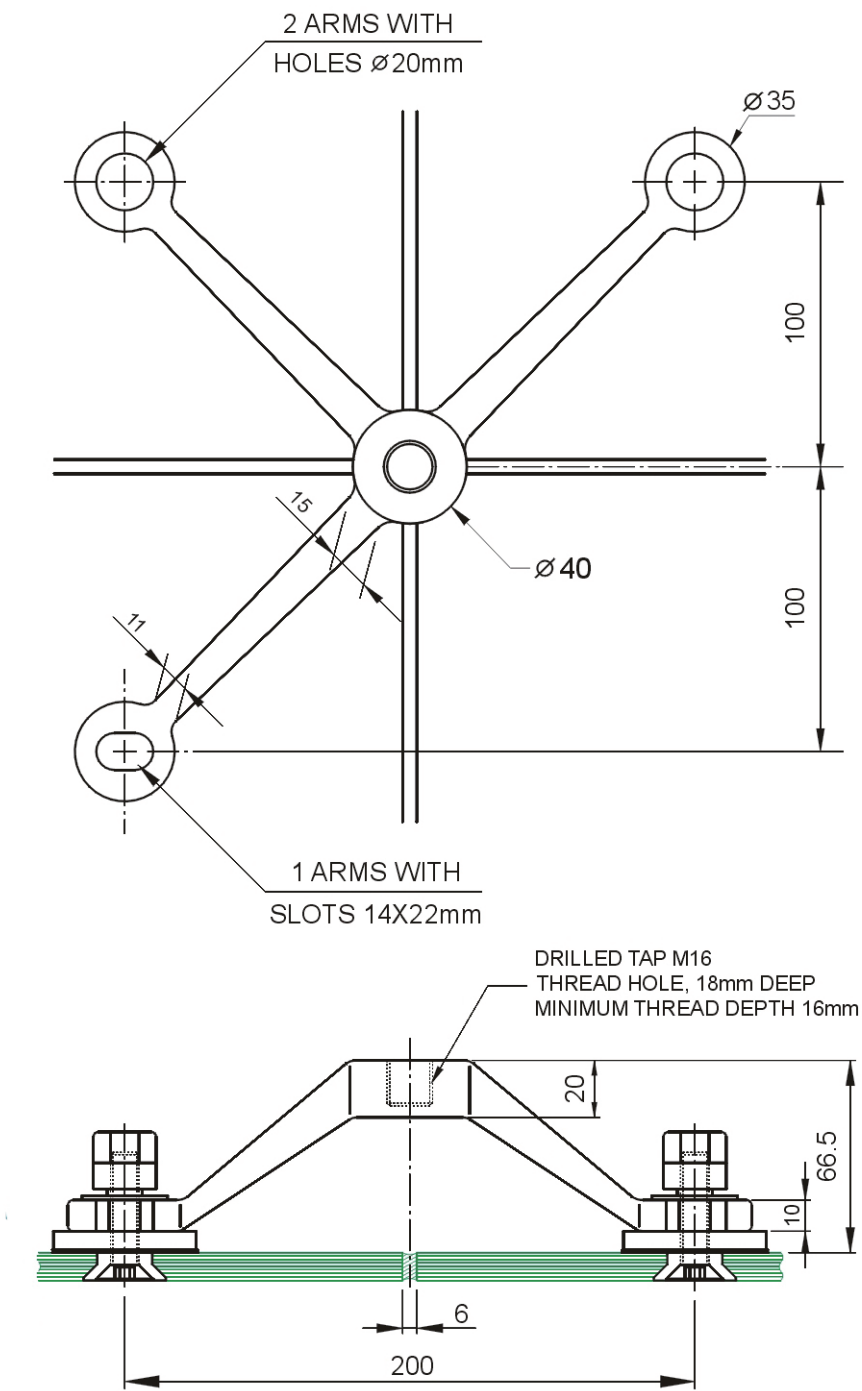


# 3 Way Glass Connection



GWSFA – 3

## Product Dimensions



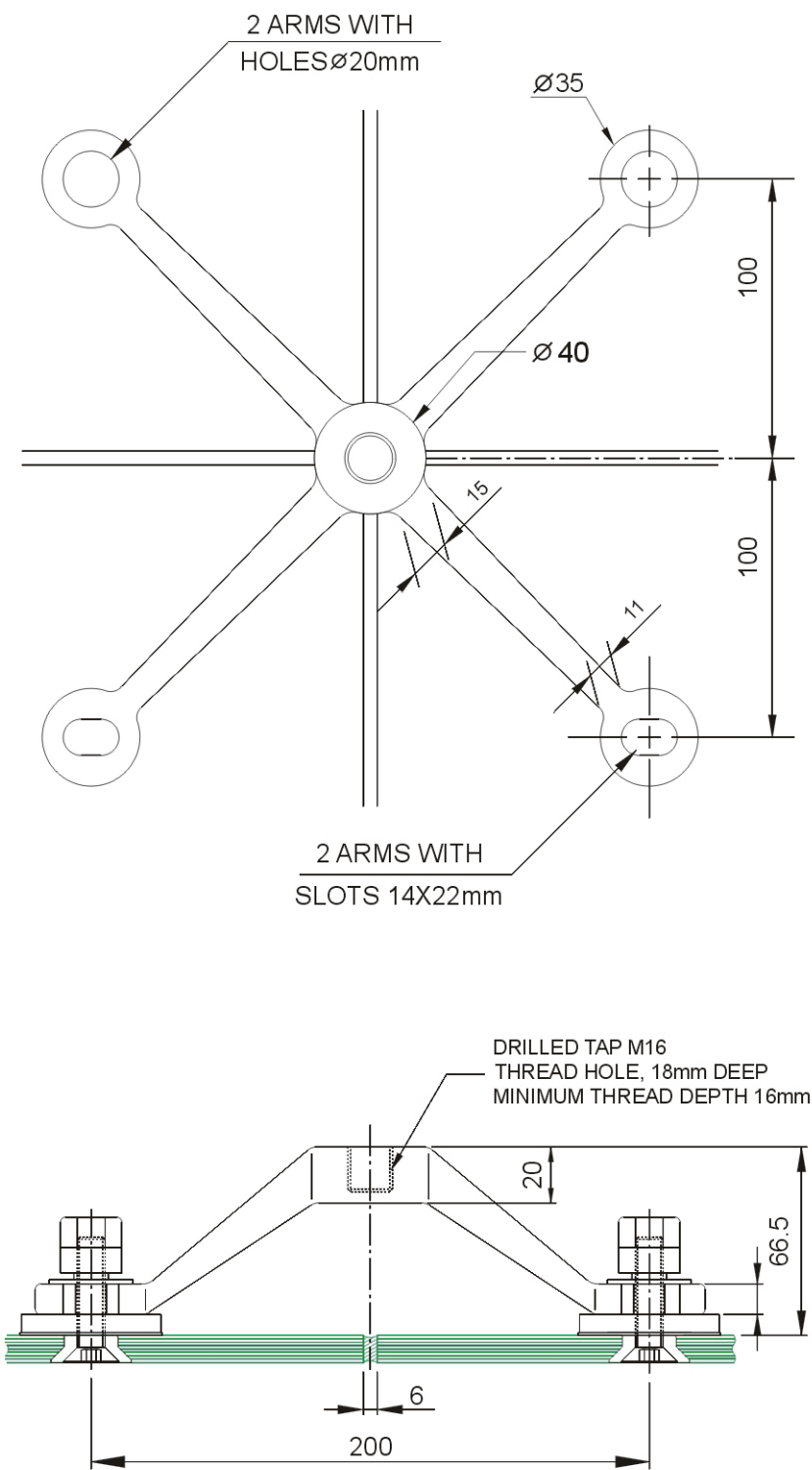


# 4 Way Glass Connection



GWSFA – 4

## Product Dimensions



# Reference

## Product Information:

- Material: 316 Grade Stainless Steel
- Glass Thickness: 12mm ~ 38mm
- Bolt Assembly Type: 2.11, 2.3D, 2.3D IG, 2.1, 2.11 and 2.3 IG
- Glass Hole: Required
- Finish: Stainless Polished, Stainless Satin, Dark Bronze, and Matte Black

## Product Finishes:

Stainless Polished (SP)

Dark Bronze (DB)

Stainless Satin (SS)

Matte Black (MB)

## Glass Uses:



Monolithic Glass



Laminated Glass



Insulating Glass

\*For use with Tempered Glass Only

## Product Uses:



Steel Tube



Steel Pipe



I Beam

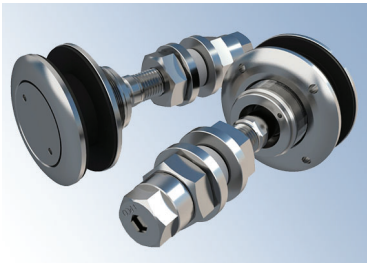


Cable Truss

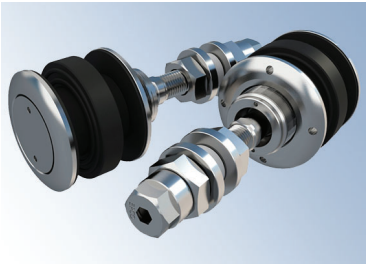
## Bolt Assemblies:



2.11 Flat Head  
Fixed Bolt Assembly



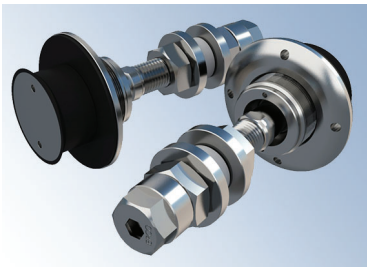
2.3D CS/OD  
Articulated Bolt Assembly



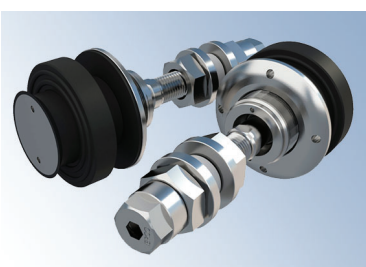
2.3D IG CS/OD/IG  
Articulated Bolt Assembly



2.1 Countersunk  
Fixed Bolt Assembly

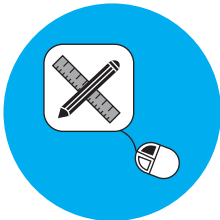


2.3 Countersunk  
Articulated Bolt Assembly

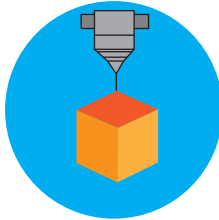


2.3 IG Countersunk/IG  
Articulated Bolt Assembly

## Key Services:



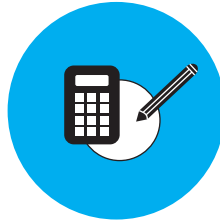
Design/Conceptual Drawings



3D Molding



Solutions with customers' comments  
and field conditions



Engineering and Calculation



2D/3D Shop Drawings and  
Detailing



Fabrication Drawings and Part  
Manufacturing



## EPCO Point Supported Systems

- GPK System
- GWPFA Fin Fitting System
- GWSFMA Structural Fitting System
- Single Point Fixing System
- Tension Rod System
- Patch Fitting System
- Notch-Less Glass Wall System

