



## CORPORATE PROFILE

### EPCO GROUP

has been in the international market since 1980. Though we are quite young, we are able to capture the modern market with our "Future Products Now".

EPCO started setting up in Australia and established a network of affiliated companies throughout Asia, Middle East, USA and Europe. The Founder Associates of EPCO have a wealth of practical marketing, technical and commercial experience in over 20 countries.

In the Philippines, EPCO products have been put on the market since 1990. We relate our products mostly to commercial and high-end residential projects.

EPCO's involvement in various landmark projects gives us the experiences to assist and provide our clients and potential suppliers the right product for the right application. Also, our long term experiences in the glass and aluminum industry has resulted in our involvement with the world's leading manufacturers of aluminum, glass and accessories.

### Our hardware specialization:



GLASS FACADE



PIVOT DOOR



STAIR RAILINGS



GLASS CURTAIN WALL



SHOWER ENCLOSURE



SLIDING GLASS DOOR

EPCO products provide complete solution with technical support and analysis.



Glass Facade & Cladding using Spider System

### THE PHILOSOPHY OF EPCO:

#### GROUP VISION

OFFERS TOTAL SOLUTION FOR GLASS INDUSTRY AS QUALIFIED SUPPLIER AND DESIGNER AND PROVIDE ENGINEERING SUPPORT AND THE BEST SERVICE.

#### GROUP STRATEGY

SELLING ON KNOWLEDGE, QUALITY AND SERVICE NOT ON PRICES.

#### GROUP CULTURE

"HONOR, INTEGRITY, DISCIPLINE AND TEAM WORK".



Philippine and International Projects



## ARCHITECTURAL HARDWARE

### EPCO SPIDER SYSTEM

Modern architects strive to blend the openness of the outdoors with the environmentally protected building interior. In recent years the technological thrust firm minimalist glass facades has provided the design freedom to create the illusion of open spaces.

With the EPCO Spider System the transparent membrane is freed from earthbound and levitated skywards. A constant throughout, the EPCO Spider System can accommodate a range of suspended all-glass assemblies. The fittings are made of grade 316 stainless steel with 600Mpa strength providing a rigid and flexible connection between glass and supporting system.

The arms of the fittings are designed to support a maximum loading and allow flexibility to reduce the stress around the glass holes.



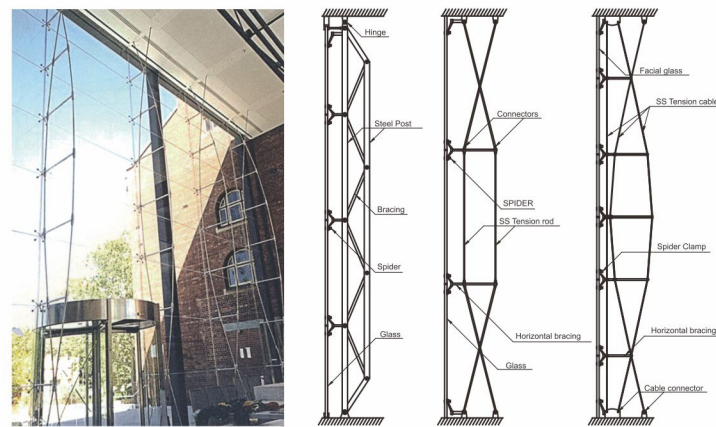
### Spider Glass Fin System

The main glass facade is suspended from a beam or slab with concealed clamps. Lateral support is provided by tempered glass fins in various designs.



### Glass Fin Plate System

The glass fins are independently clamped to the support structure and consist of several pieces held together with stainless steel splice plates.



### Spider Cable Structure & Tension Rod System

A cable-truss is formed to provide restriction against lateral movement with two single strand stainless steel pre-tension cables tied to the building structure via turnbuckles and fork ends.

The Tension Rod System is used in a vertical plane, utilizing stainless steel tension fittings, cable cross bracing and propriety clamps. A distinctive architectural effect is achieved relying on tensioning between the overhead beam and floor slab.



### ARTICULATED BOLT System - Stress-free

Maximum Angle allowance up to 40°. No bending or twisting loads will be taken by the glass. Allowing the designers to predict that all loads will remain in the plane or perpendicular to the plane of the glass. Allowing the differential movements between the glass and structure. Sensible to distribute the loads as dead load, negative and positive wind load to the substructure.

- Flat Head Standard Bolt assembly for double glazing panel.
- Countersunk Standard Bolt assembly for single glass panel.
- Countersunk Articulated Bolt assembly for single glass panel with limited swivel range for handling flush facade.
- Countersunk Articulated Bolt assembly for single glass panel. Swivel range up to 40°.
- Flat Head Articulated Bolt assembly for single glass panel. swivel range up to 40°. Customized design for special bolt that manufacturing to meet your demand is available with back-up by our Engineering Team.



## ARCHITECTURAL HARDWARE

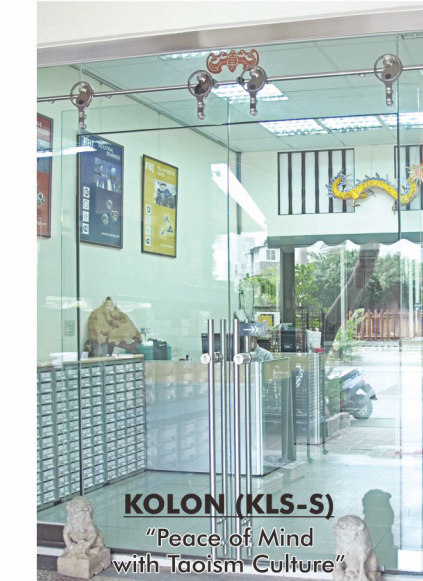
### Creative Design with EPCO KOLON Pivoting System:



The EPCO KOLON system captures the public's imagination through its wide range of coordinated and compatible stainless steel components.

Awarded for its design, renowned for its performance capabilities, enthusiastically received by architects and specifies alike EPCO KOLON has arrived.

Using the EPCO KOLON concepts as the basis for creative interior design, further EPCO KOLON system components and sub-assemblies can be incorporated for a wide range of internal and external applications.



### Kolon Sliding Door System:

The variation of human traffic requires a high degree of flexibility in interior architecture and spatial division. Horizontal sliding partitions can open or divide service zones and eliminate the barrier between interior and exterior.



### Modern Design with EPCO ELLIPSE Pivoting System:



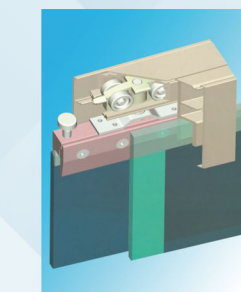
The system catches up with the aesthetic demand and quality standards of today's structural ventures and future developments.

With its tough stainless steel components that have attractive profile, it can provide a minimalist result and excellent performance.

Incorporating other EPCO products such as our door closer will definitely make available a door of the best representation without compromising safety and flexibility.

### Manual Sliding Door System:

**RS160**  
Top hung slider  
for Heavy Duty



**RS100**  
Top hung slider  
for Light Duty



**RS170**  
Sliding/Stacking  
Patch Fitting System



**PR170**  
Sliding/Stacking  
Door Rail System



### Store Front Door System:



### PATCH FITTINGS: FLOOR SPRING:

The universal Patch Fittings is a comprehensive range of accessories including door rails, handles, floor hinges and transom closers, produced to give commercial fabricators, shopfitters, designers & architects absolute freedom of design when using toughened glass.

At EPCO Door Controls / Floor Spring we pride ourselves in being able to provide real world, optimum solutions for your door control needs.

### STUDIO TEXAS







## REFERENCES

### PHILIPPINE PROJECTS:

Commercial and High-end Residential Buildings



Client: Manila Grand  
Location: Metro Manila, Philippines

Glass front facade using Spider Fin System and Patch System on entrance door



Client: Buddy's Burger  
Location: Quezon City, Philippines

A modern architecture and aesthetic art in a classic type restaurant using Spider System on Glass Wall Facade.



Client: Malabon City Hall  
Location: Malabon City, Philippines

Scenic Glass Wall @ City Hall Elevator



Location: Alabang City, Philippines

Glass Curtain wall facade using Spider Fin System @ stair case in alabang residence

Client: Bjorklund Residence  
Location: Tagaytay Highlands, Tagaytay City, Phils.



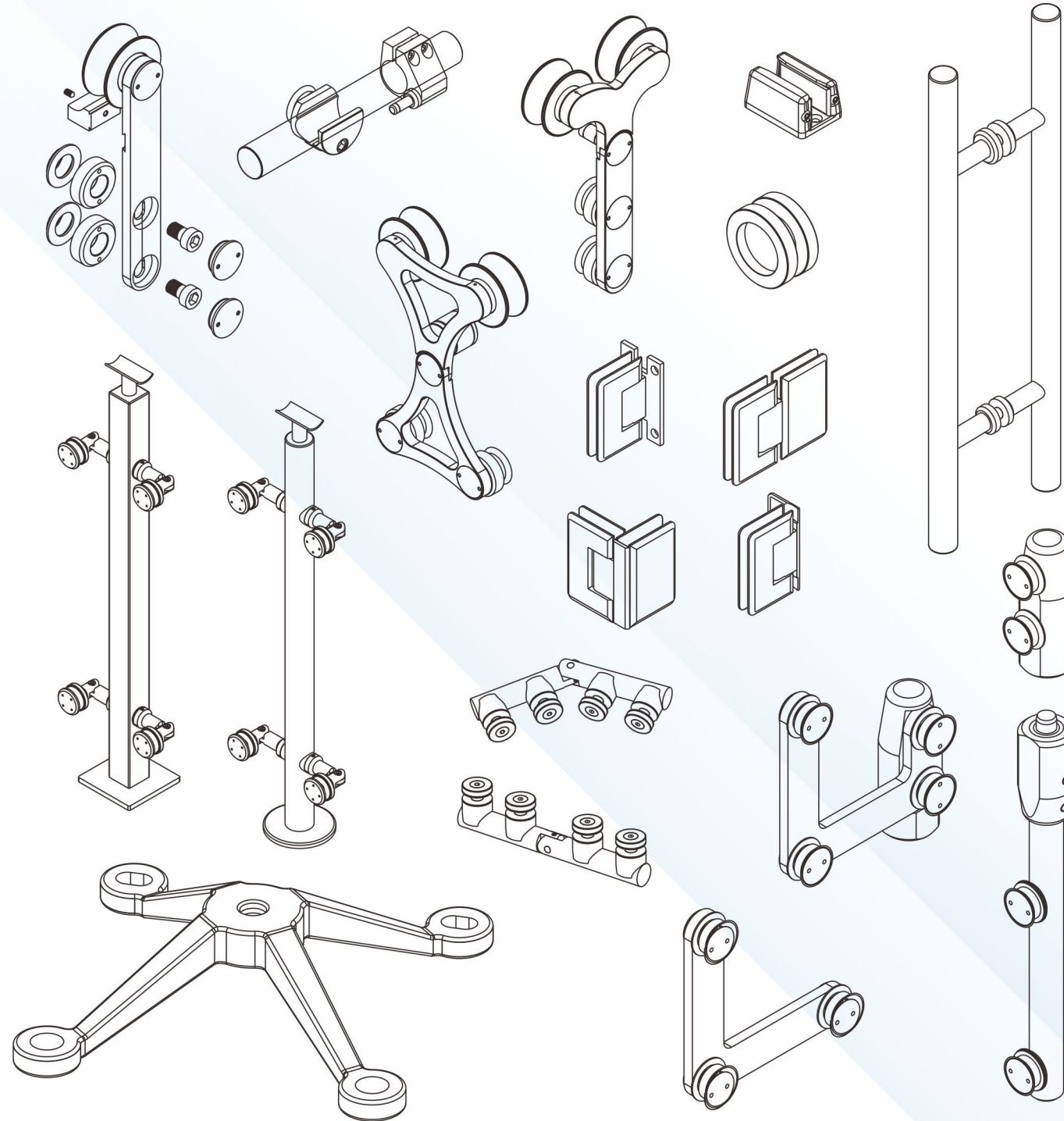
Segmented glass stair railings in Tagaytay Residence

Mall Shop Fronts in Philippines

With a touch of modern design using Patch System on Entrance & Shop Fronts



## ARCHITECTURAL HARDWARE



### WORLDWIDE BRANCHES:

URL: <http://www.epcocorp.com>  
E-mail: [epco@epcocorp.com](mailto:epco@epcocorp.com)

#### Head Office

EPCO Architectural Hardware (USA) Inc.  
16004 Kaplan Avenue, City of Industry, CA91744  
Tel: (626) 961-6827 Fax: (626) 961-3525

#### Taiwan Branch

EPCO Architecture Hardware (Taiwan) Corp.  
Unit. A, 18-30, Jiang Shang Rd., Da Liao Dist.,  
Kaohsiung City, Taiwan  
Tel: (886-7) 701-3219 Fax: (886-7) 701-3210

#### Philippines Branch

EPCO-Phils  
485 Boni Ave., Brgy. Plainview  
Mandaluyong City, Philippines  
Tel: (632) 532-1500 Fax: (632) 531-9010

#### EPCO UK

Glasswall Engineering Ltd.  
[Glasswall@epco-uk.com](mailto:Glasswall@epco-uk.com)  
[www.epco-uk.com](http://www.epco-uk.com)



## EPCO PHILS. STRUCTURAL GLASS, INC.

- ARCHITECTURAL HARDWARE
- FRAMELESS GLASS CONSULTANT
- GLASS FACADE SPECIALIST



### WORLDWIDE PROJECTS:

EPCO's involvement in various landmark projects in the most prestige countries



#### MIDDLE EAST



#### USA

#### UNITED KINGDOM