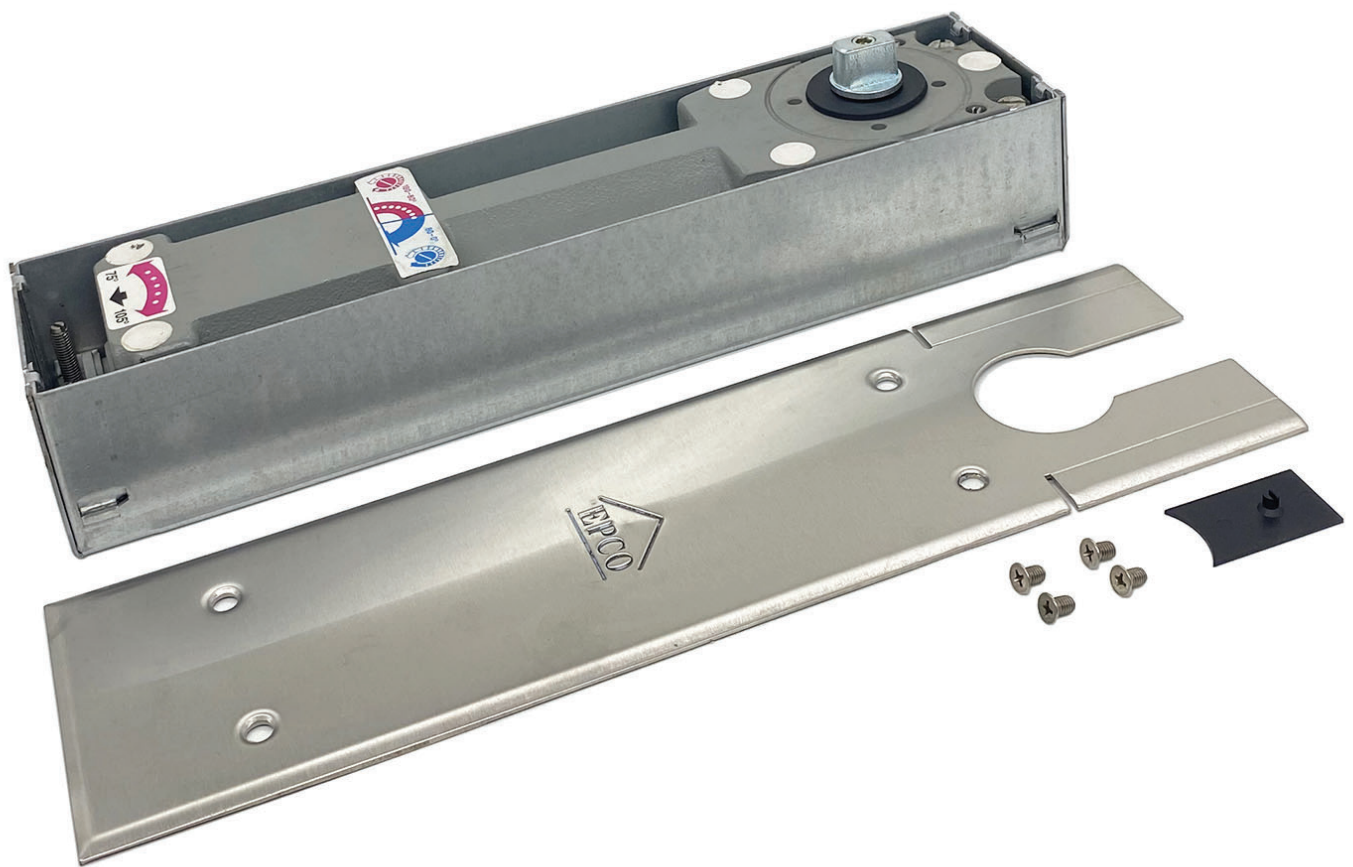


EPCO 96 SERIES

HEAVY DUTY FLOOR CLOSER



MODEL: EPCO 96X (X=ANSI SIZE 3, 4, 6)

E: info@epcocorp.com W: www.epcocorp.com

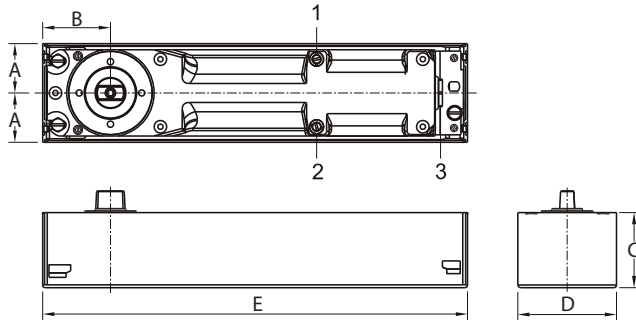
© Copyright 2022-2023 EPCO Architectural Hardware (USA) Inc. - All right reserved. Usage strictly limited to contract condition more information please contact us through email info@epcocorp.com



**EPCO USA
ARCHITECTURAL
HARDWARE
SOLUTIONS**

HEAVY DUTY FLOOR CLOSER

- For doors weighing up to 660 lbs(300 kg). 54"(1371mm) wide interior and 48"(1219mm) wide exterior
- Universally suitable for rebated and double swing doors
- Compact closer body and cement case
- 1/4"(6mm) lateral and 3/32"(2.5mm) longitudinal adjustment of closer body in the cement case and 5/32"(4mm) height adjustment
- Interchangeable Spindles
- Certified to the requirements of ANSI/BHMA A156.4 Grade 2
- 10-Year Limited Warranty



	A	B	C	D	E
Inches	1-13/32 – 1-21/32	2 – 2-1/4	2-3/8	3-1/8	13-7/16
Millimeters	36-42	51-57	60	79	341

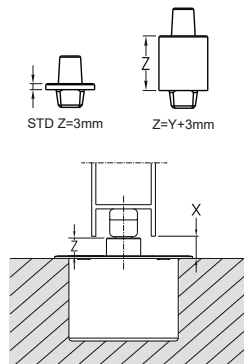
Size selection chart

EPCO 96 Series	ANSI Size	Exterior	Interior
EPCO 963	3	30" – 36" (762mm-914mm)	30" – 42" (762mm-1066mm)
EPCO 964	4	30" – 42" (762mm-1066mm)	30" – 48" (762mm-1219mm)
EPCO 966	6	42" – 48" (1066mm-1219mm)	48" – 54" (1219mm-1371mm)

The door width usually determines the spring strength. If there are unusual site conditions, e.g. high or exceptionally heavy doors or wind pressure, the next stronger spring size should be selected.

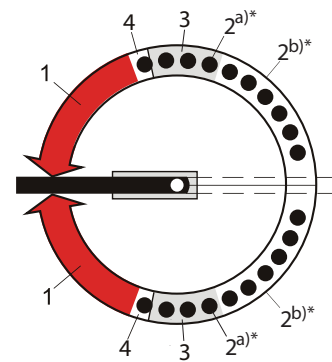
SPINDLES:

Spindle Code #	Inches		Millimeters	
	Spindle Extension "Y"	Dimension "X" (Door Clearance)	Spindle Extension "Y"	Dimension "X" (Door Clearance)
9X008	STD	5/16	STD	8
9X913	3/16	1/2	5	13
9X015	5/16	5/8	7.5	15.5
9X018	3/8	3/4	10	18
9X020	1/2	13/16	12.5	20.5
9X023	5/8	7/8	15	23
9X028	13/16	1-1/8	20	28
9X033	1	1-5/16	25	33
9X038	1-3/16	1-1/2	30	38
9X043	1-3/8	1-11/16	35	43
9X048	1-9/16	1-7/8	40	48
9X053	1-3/4	2-1/16	45	53
9X058	1-15/16	2-5/16	50	58



Product Features and Functions:

- Controlled closing from 175° is provided by dual thermostatic control valves with special hydraulic fluid
- Closer is protected by a pressure relief valve to avoid damage caused by forced closing
- Selective hold open between approx 75° and 175°
- Selectable delayed action between 175° and approx 75° (Delayed action is functional when hold-open is not engaged)
- Adjustment of hold open start or when delayed action is released. Adjustable from approx 75° to approx 105°
- Mechanical backcheck at approx 70°



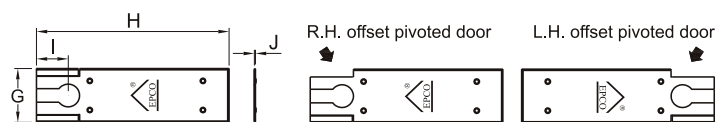
- Valve adjustment for closing speed from approx 70° to 0°
- Valve adjustment from 175° to approx 75°
 - Selective hold open between approx 75° and 175°
 - Selectable delayed action between 175° and 75°
- Start of hold open/End of delayed action range adjustment. Adjustable from approx 75° to approx 105°
- Mechanical backcheck at approx 70°

* Turning valve to the right creates a longer delay time and slows down the closing speed. Turning valve completely to the right creates hold-open and eliminates delayed action.

Cover Plate:

Universal stainless cover plate, suitable for left hand/right hand, 3/4"(19mm) offset, 1-1/2"(38mm) offset and center pivoted doors.

Finish: Polished SS, Brushed SS, Dark Bronzed



	G	H	I	J
Inches	4	14-3/32	2-9/32	3/32
Millimeters	100	358	58	2

EPCO 96 SERIES



EPCO USA
ARCHITECTURAL
HARDWARE
SOLUTIONS

HEAVY DUTY FLOOR CLOSER

**INSTALLATION:
FRAMELESS DOOR WITH
TOP PATCH FITTING &
BOTTOM DOOR RAIL**

